



## 2/2 way directional valves KVC

- NG 6
- Up to 250 bar [3 625 PSI]
- Up to 35 L/min [9.2 GPM]



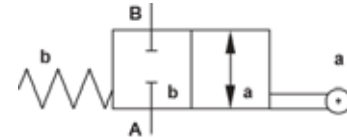
KVC-2/2-K

Mechanically operated

### Features

Size		6
Flow rate	L/min [GPM]	35 [9.2]
Operating pressure	bar [PSI]	250 [3 625]
Viscosity range	mm <sup>2</sup> /s [SUS]	15 to 380 [69.5 to 1 760]
Oil temperature range	°C [°F]	-20 to +70[-4 to 158]
Filtration	ISO 4406-1999	19/17/14
Mass	kg [lb]	1,2 [2.6]
Seal type	NBR seals for mineral oil HL, HLP, to DIN 51524	

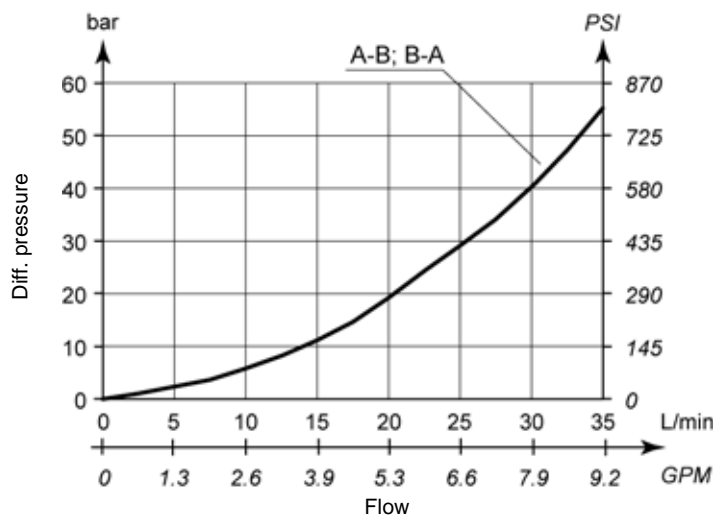
### Hydraulic symbol



Hydraulically operated

### ΔP-Q Performance curves

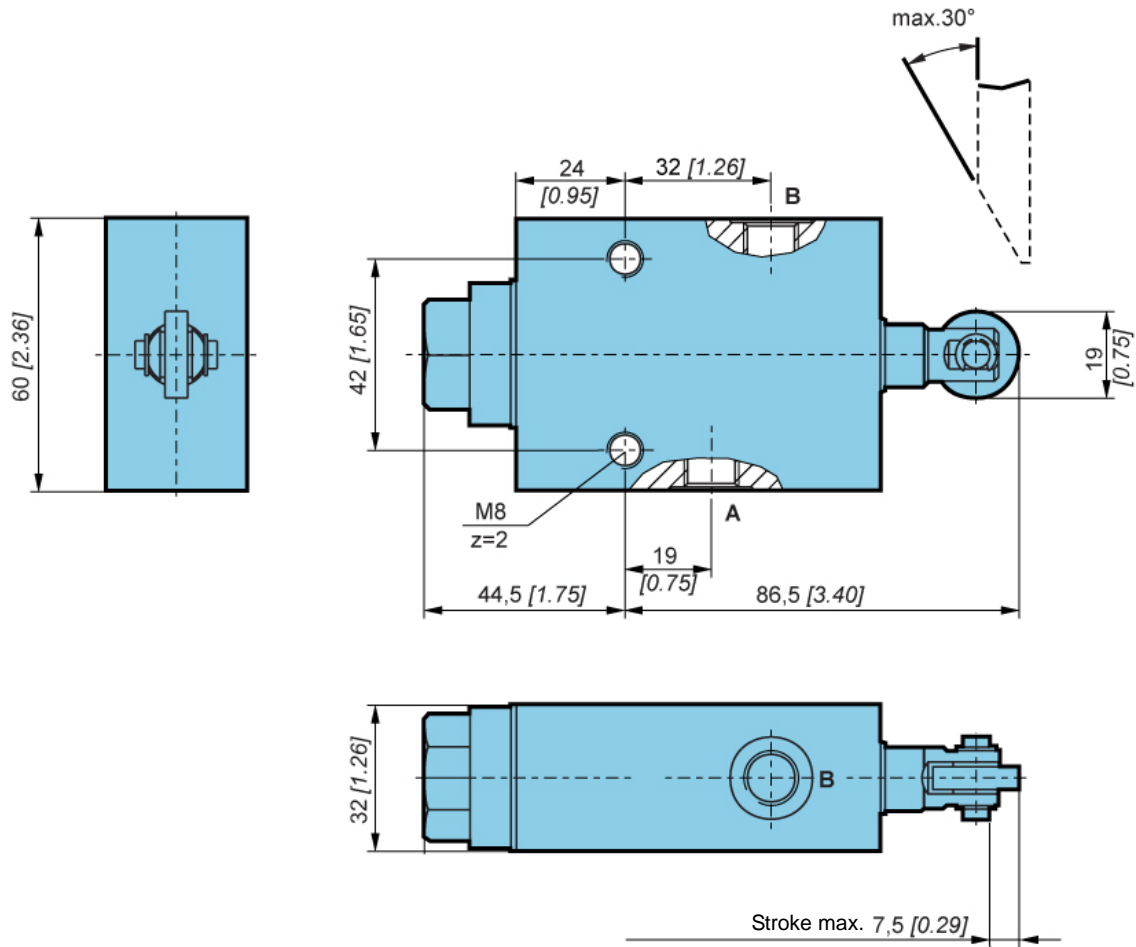
Measured at 50°C [122°F] and viscosity of 32 mm<sup>2</sup>/s [148 SUS].



Electrically operated



Dimensions



Model code

K V C - 2 / 2 - K - □ - \*

Threaded connections

M12X1,5	No designation
G3/8	3/8

Special requirements to be briefly specified



## 2/2 WAY DIRECTIONAL VALVES KVC-NV

- NG 6
- Up to 210 bar [3 045 PSI]
- Up to 40 L/min [10.5 GPM]



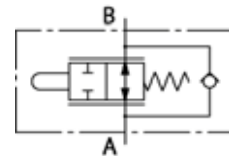
**KVC-2/2-NV-T**

Mechanically operated

### Features

<b>Size</b>		<b>6</b>
<b>Flow rate</b>	L/min [GPM]	40 [10.5]
<b>Operating pressure</b>	bar [PSI]	210 [3 045]
<b>Viscosity range</b>	mm <sup>2</sup> /s [SUS]	15 to 380 [69.5 to 1 760]
<b>Oil temperature range</b>	°C [°F]	-20 to +70[-4 to 158]
<b>Filtration</b>	ISO 4406-1999	19/17/14
<b>Mass</b>	kg [lb]	1,2 [2.6]
<b>Seal type</b>	NBR seals for mineral oil HL, HLP, to DIN 51524	

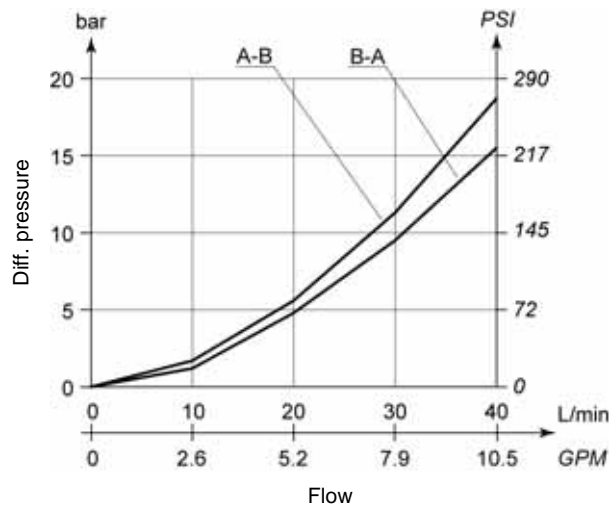
### Hydraulic symbol



Hydraulically operated

### ΔP-Q Performance curves

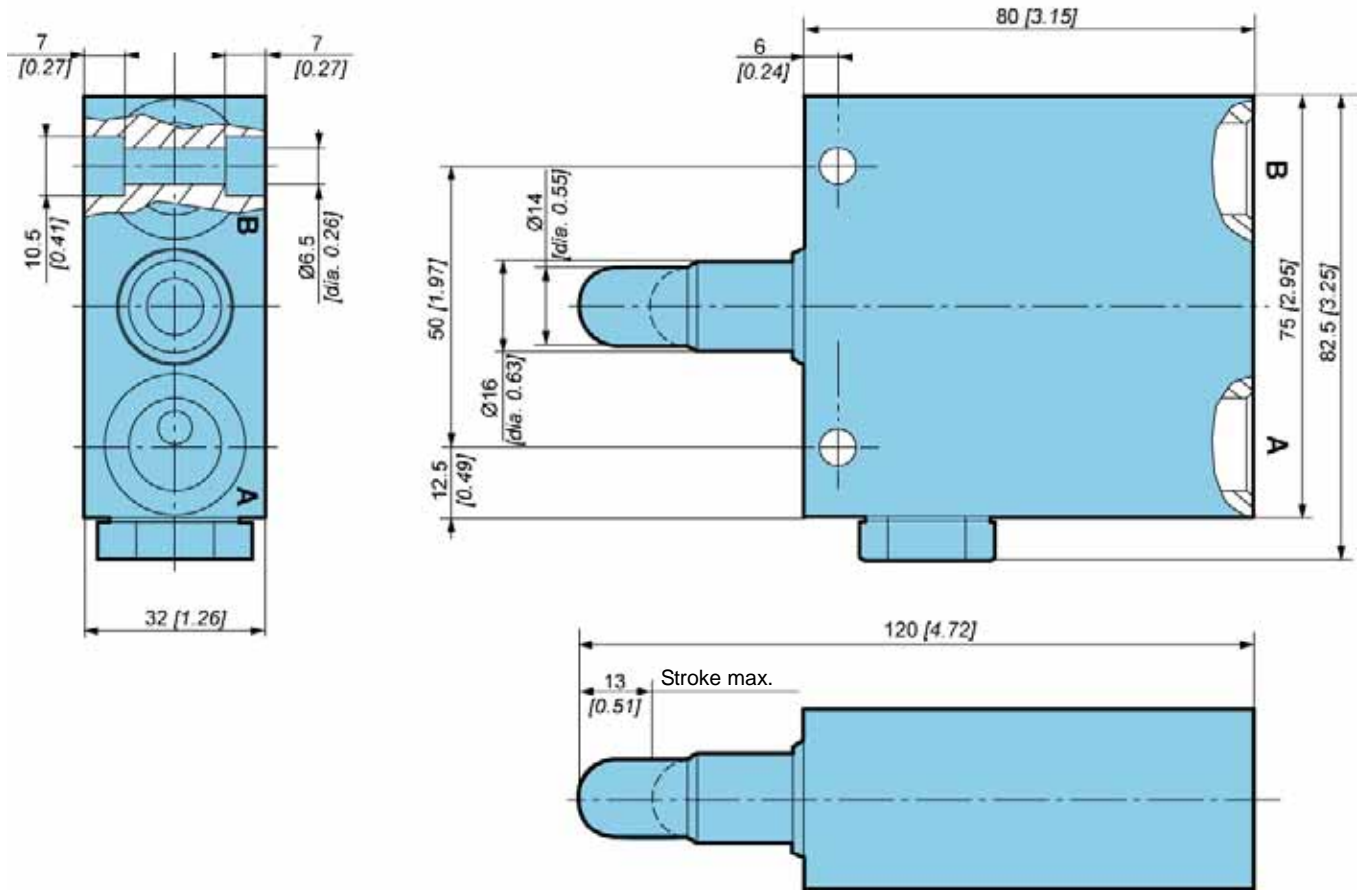
Measured at 50°C [122°F] and viscosity of 32 mm<sup>2</sup>/s [148 SUS].



Electrically operated



Dimensions



Model code

K V C - 2 / 2 - N V - T -  - \*

Threaded connections

M18x1,5	No designation
G3/8	3/8

Special requirements to be briefly specified