

## End Plates

Blocking plates are used for auxiliary mounting surface or for closing unnecessary circuits.

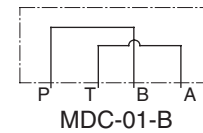
Bypass plates are used for unidirectional circuits that require no solenoid operated directional valves.

## Specifications

Model Numbers	Max. Operating Pressure MPa (PSI)	Max. Flow L/min (U.S.GPM)
MDC-01-*-30	31.5 (4570)	35 (9.25)



Graphic Symbols



## Model Number Designation

F-	MDC	-01	-A	-30	*
Special Seals	Series Number	Plate Size	Type of Plate	Design Number	Design Standard
<b>F:</b> Special Seals for Phosphate Ester Type Fluids (Omit if not required)	<b>MDC:</b> End Plate	<b>01</b>	<b>A:</b> Blocking Plate <b>B:</b> Bypass Plate	<b>30</b>	Refer to ★

★ Design Standards: None ..... Japanese Standard "JIS", European Design Standard and N. American Design Standard

## Typical Performance Characteristics

Hydraulic Fluid: Viscosity 35 mm<sup>2</sup>/s (164 SSU),  
Specific Gravity 0.850

