



# CHECK-Q-METER MODULAR VALVE VP-BZV

- NG 6
- Up to 350 bar [5 076 PSI]
- Up to 60 l/min [15.8 GPM]
- Connecting dimensions to ISO 4401.
- Modular plate design for vertical stacking.
- Height and width of the valve according to ISO 7790.



VP-BZV-6

Direct operated valves

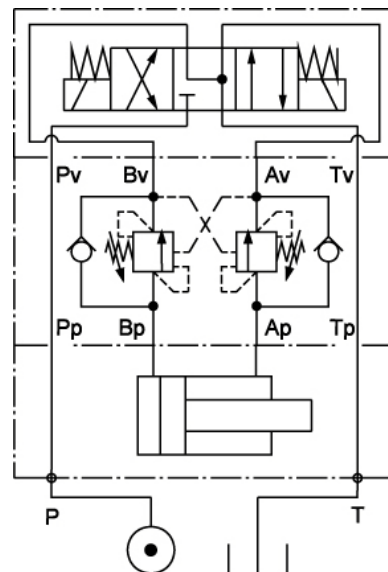
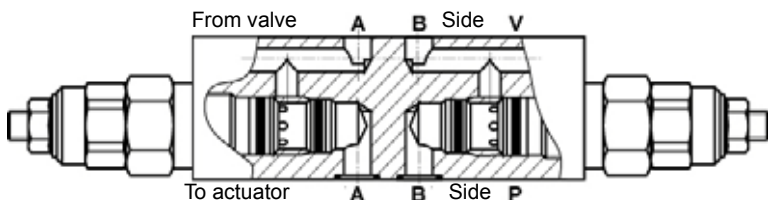
## Operation

Modular check-Q-meter valve in combination with other stacking elements gives static and dynamic load control by regulating the flow into and out of hydraulic actuators. It prevents load uncontrol run away and allows thermal expansion relief of the hydraulic fluid. Flow in line B (A) from side P to V is allowed when the required pilot pressure in line A (B) is induced. For stable valve function the valve must be set (Ps) at least 1.3 - times higher than maximum expected load pressure (PL).

## Hydraulic symbol

$$\text{Required pilot pressure (PR)} = \frac{\text{Counterbalance valve setting (Ps)} - \text{load pressure (PL)}}{\text{Pilot ratio (R)}}$$

## Mounting example



Pilot operated valves

## Features

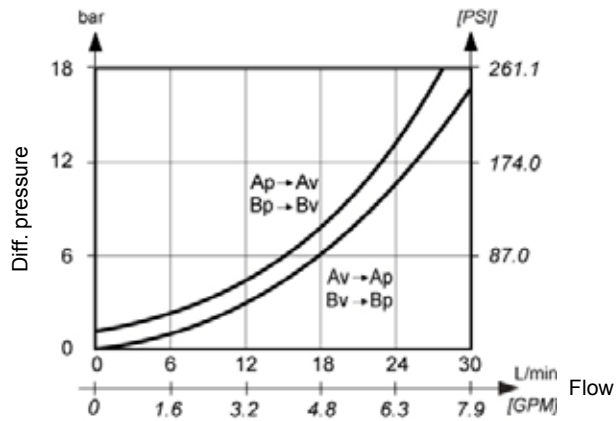
Size		6 (single valve)	6 (double valve)
Flow rate	l/min [GPM]		30 [7.9]
Operating pressure	Bar [PSI]		270 [3 916]
Cracking pressure	Bar [PSI]		1 [14.5]
Oil temperature range	°C [°F]		-20 to +70 [-4 to +158]
Viscosity range	mm <sup>2</sup> /s [SUS]		15 to 380 [69,5 to 1.760]
Filtration	NAS 1638		8
Mass	kg [lbs]	1,3 [2.9]	1,8 [4.00]

Counterbalance valves



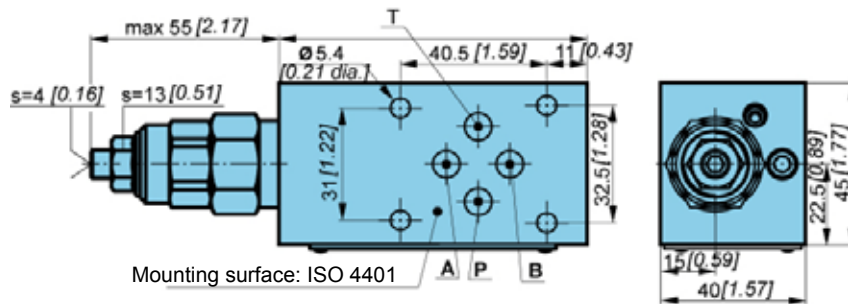
**ΔP-Q Performance curves**

Measured at 50C [122F] and viscosity of 32 mm<sup>2</sup>/s [148 SUS].

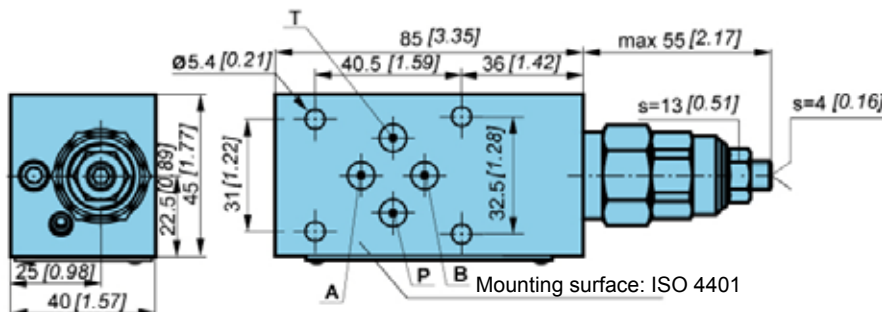


**Dimensions**

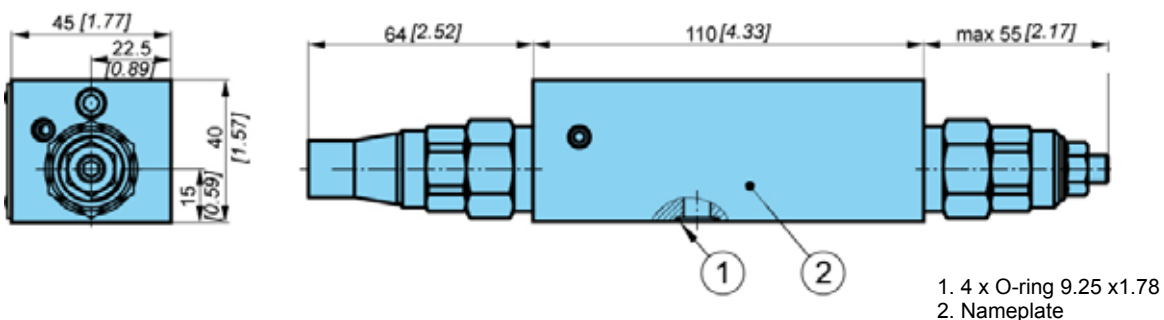
EAN, EAP, EAT



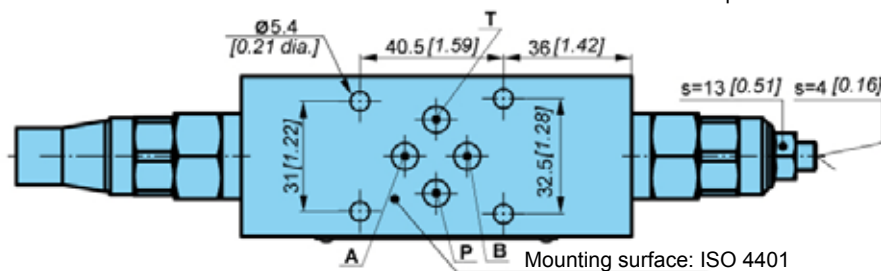
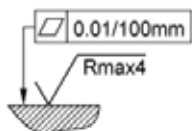
EBN, EBP, EBT



DN, DP, DT



Required quality of the mating surface



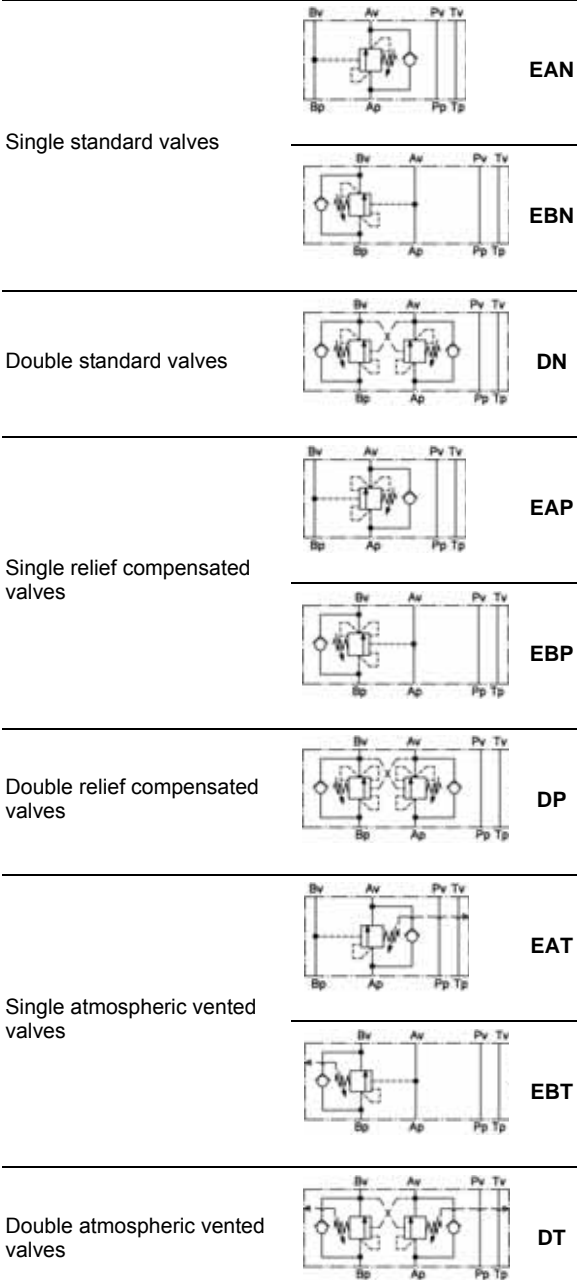


**Model code**

V P - B Z V - 6 - [ ] - [ ] - 04 - [ ] - [ ] - \*

Size  
Size 6                          6

**Symbol**



Special requirements to be briefly specified

**Seal type**  
No designation      NBR seals for mineral oil HL, HLP to DIN 51524  
E      FPM seals for HETG, HEES, HEPG to VDMA 24568 and ISO 15380

**Tamperproff cap**  
No designation      Without tamperproff cap  
RC      With tamperproff cap

**Pilot ratio**  
04      4:1

**Pressure setting range**

	Adjusted pressure range Bar [PSI]	Pressure increase Bar [PSI]/turn	Standard setting Bar [PSI] (Q= 5 l/min [1,32 GPM])
20	100 to 210 [1 450 to 3 045]	109 [1 580]	200 [2 900]
35	200 to 350 [2.900 to 5.076]	137 [1 987]	350 [5 076]

Direct operated valves

Pilot operated valves

Counterbalance valves