



PRESSURE RELIEF VALVE VVB2-10

- NG 6
- Up to 210 bar [3,045 PSI]
- Up to 60 L/min [15,8 GPM]
- Direct in-line mounting.
- threaded connections to ISO 9974 (Metric), ISO 1179 (BSPP/Gas).
- Five different pressure setting elements.

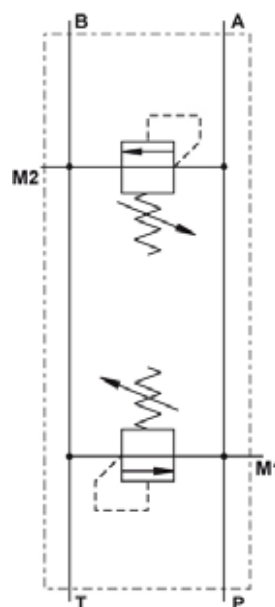


VVB2-10-...

Features

Size	6	
Operating pressure	Bar [PSI]	210 [3 045]
Flow rate	L/min [GPM]	60 [15.8]
Pressure setting range	bar [PSI]	120 [1 740]; 160[2 320]; 200 [2 900]
Oil temperature range	°C [°F]	-10 to +70 [14 to +158]
Viscosity range	mm ² /s [SUS]	15 to 380 [69.5 to + 1,760]
Filtration	ISO 4406-1999	19/17/14
Mass	kg [lbs]	1.85 [4.08]
Seal type	NBR seals for mineral oil HL, HLP, to DIN 51524	

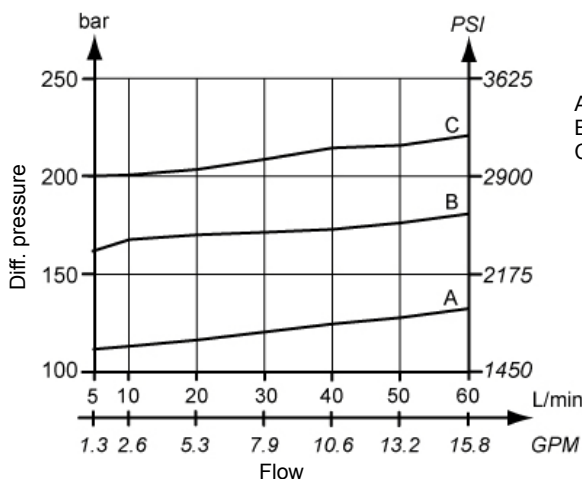
Hydraulic symbol



Direct operated valves

ΔP-Q Performance curves

Measured at 50°C [122°F] and viscosity of 32 mm²/s [148 SUS].

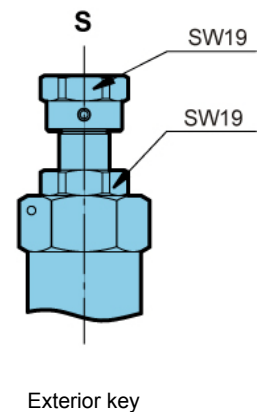
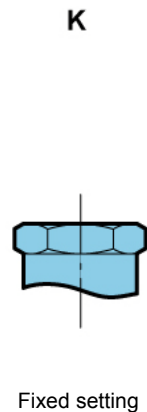
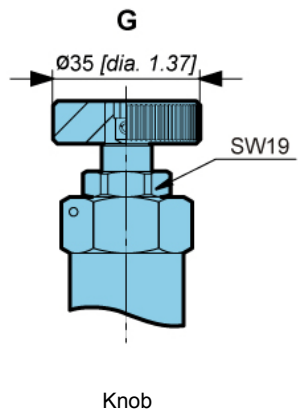
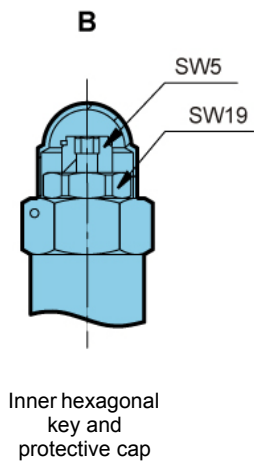
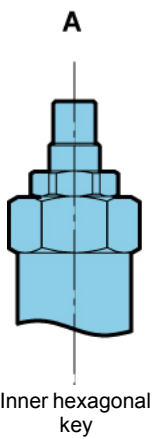
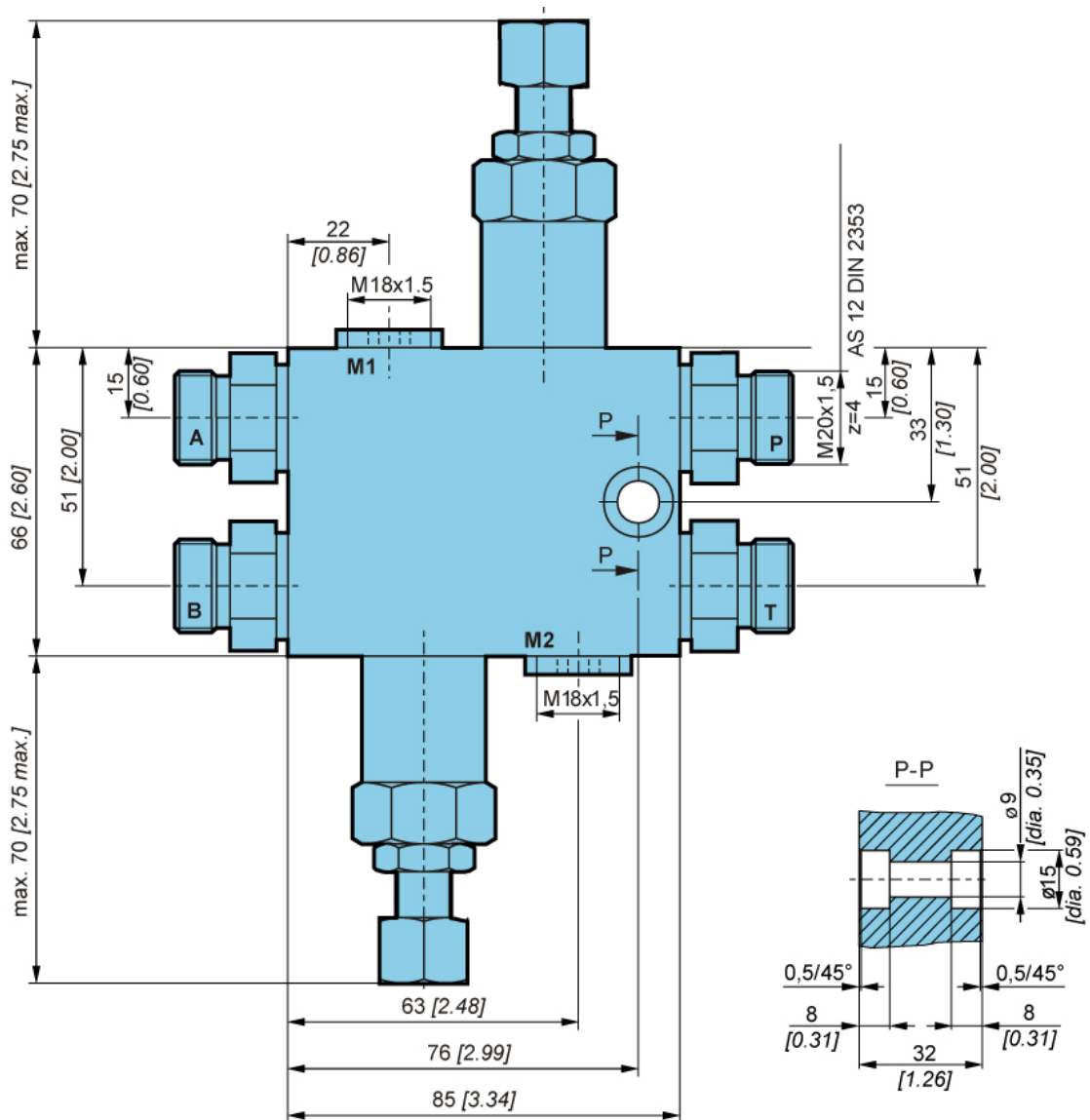


A = 120 bar [1740 PSI]
 B = 160 bar [2320 PSI]
 C = 200 bar [2900 PSI]

Pilot operated valves



Dimensions





Model code

V V B 2 - 1 0 - [] - [] - [] - *

Pressure setting range [PSI]

120 [1740]	120
160 [2 320]	160
200 Bar [2 900 PSI]	200

Pressure setting element

Inner hexagonal key	A
Inner hexagonal key and protective cap	B
Knob	G
Fixed setting	K
Exterior key	S

Threaded connections

M18 x 1,5	No designation
G 3/8	3/8

Special requirements to be briefly specified

Direct operated valves

Pilot operated valves