

FT2270/5



SINGLE-ACTING PRESSURE COMPENSATED CONTROL AISI 316 STAINLESS STEEL VALVES

The pressure compensated valves are essentially composed of an adjustable orifice and of a pressure compensator. The check valves, realized through a valve poppet, reduce the number of the components in movement. Inside the base there are wide transverse sections which appreciably reduce the loss of pressure. The accuracy of the machining of the internal components ensures a very low hysteresis.

The accurate checks carried out on the products ensure a good working of the valves also in bad working conditions. This special version, made in AISI 316, is indicated for aggressive fields, for example chemical, pharmaceutical, food sectors, sea field, where corrosion resistance is required, resulting both from the environment that other chemical agents. The only fluid allowed is hydraulic oil.



On request

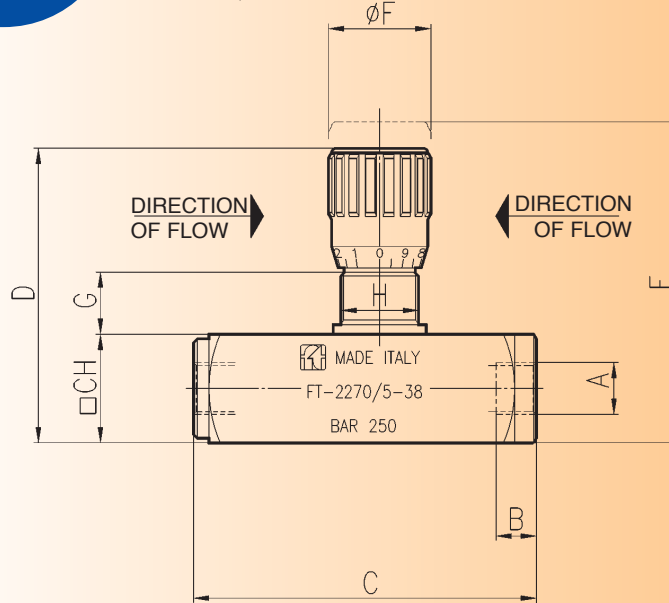
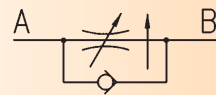
- Complete with panel mounting ring nut
- stainless steel knob (mx)

materials

Body	AISI 316 stainless steel
Needle	38 Ni Cr Mo 4 UNI - EN 10083
OR	Viton
Antiextrusion ring	PTFE
Handwheel	GD - Al Si 12 UNI 5706
Handwheel (mp)	Acc. Inox AISI 316

example for ordering

Code	Type	Panel ring	Plastic handwheel
FT 2270/5	14	G	mx

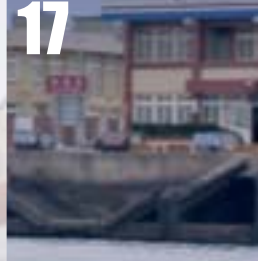


dimensions

Type	ØA UNI 338	B	C	D	E	ØF	G	H	CH	Weight kg
14	1/4" G	12,5	94	81,5	88,5	27	15	M20x1	30	0,580
38	3/8" G	13	110,5	94,5	103	33	17	M25x1,5	35	0,940
12	1/2" G	15,5	137	112	122	38	18	M30x1,5	45	1,830
34	3/4" G	17	163	138	150	47	24	M40x1,5	55	3,350

technical data

Type	Working pressure bar	Minimum working Δp bar	Working temp. °C	Filtration grade μm absolute
14	250	5	-20°/+160°	25
38	250	7	-20°/+160°	25
12	250	10	-20°/+160°	25
34	250	10	-20°/+160°	25

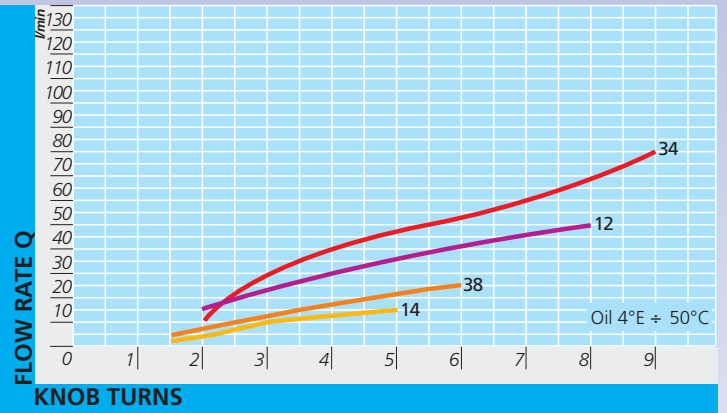


17

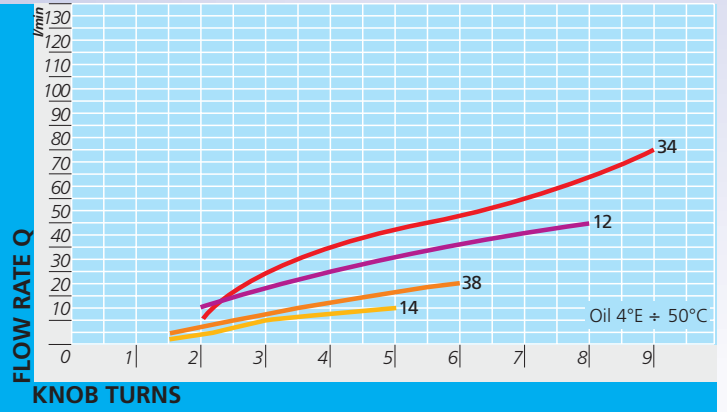
flowrate



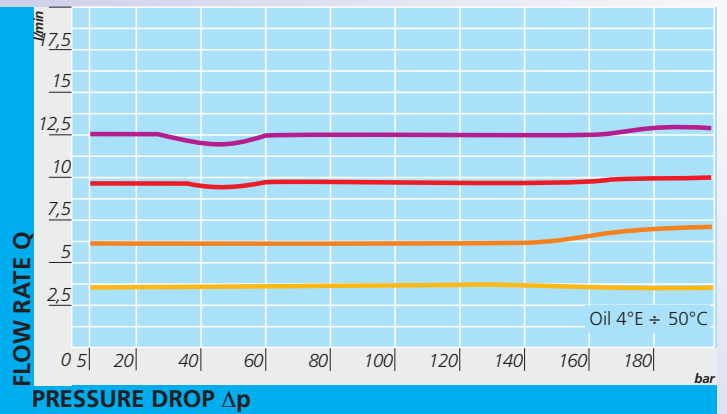
FT 2270/2 FT 2270/5



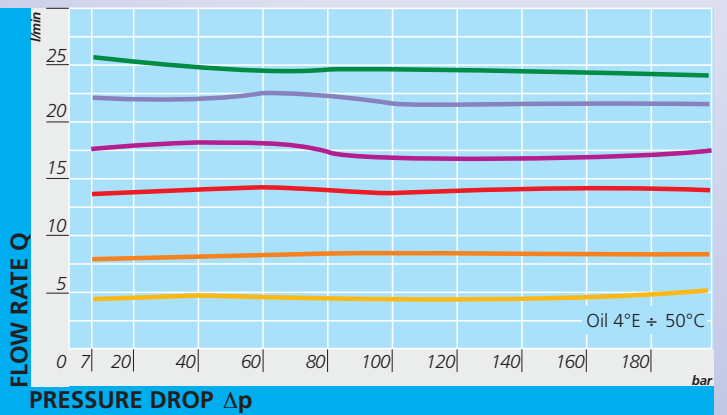
FT 2270/2 FT 2270/5



FT 2270/2 FT 2270/5-14



FT 2270/2 FT 2270/5-38



curves

