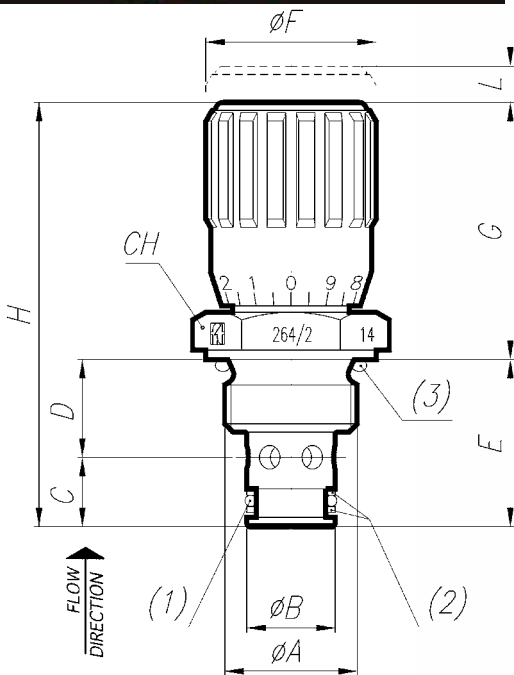



**MATERIALS**

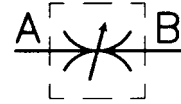
BODY	11 S MN PB 30 - UNI EN 10087
NEEDLE	1 C 40 - UNI 8373
OR	NITRILE
ANTIEXTRUSION RING	PTFE
KNOB	GD AL SI 12 - UNI EN AB 46100
KNOB (MP)	ABS

**EXAMPLE FOR ORDERING**

	CODE	TYPE	VITON SEAL	PLASTIC KNOB
STEEL	FT 264/2	38	V	MP
STAINLESS STEEL	FT 2264/2	12	-	MP


**DIMENSIONS**

TYPE	ØA	ØB	C	D	E	ØF	G	H	L	CH	(3)
18	1/2" GAS	14	12,5	14	26,5	22	36,8	63,3	5,6	27	ORM 0180-25
14	1/2" GAS	14	11	15,5	26,5	27	40,8	67,3	4,9	27	ORM 0180-25
38	1/2" GAS	16	13	17,5	30,5	33	47	77,5	8,3	27	ORM 0180-25
12	3/4" GAS	19	15,5	24,5	40	38	54,6	94,6	9,9	32	ORM 0250-25
34	1" GAS	27	18	26	44	47	64,6	108,6	12	41	ORM 0300-30



## THREADED CARTRIDGE MOUNTED DOUBLE-ACTING CONTROL VALVES BSP

They allow for regulation of flow in both directions.

### On request

- Version AISI 316 Code FT 2264/2
- Complete with Viton seals (V)
- Knob in ABS (mp)
- Lobes aluminium die-cast handwheel (RA)



FT 264/2

### TECHNICAL DATA

TIPO	TYPE FLOW SECTION CM <sup>2</sup>	MAX. WORKING PRESSURE BAR	MIN. BURSTING PRESSURE BAR	WORKING TEMPERATURE °C	FILTRATION GRADE μM ABSOLUTE
18	0,12	320	1300	-20°/+100°	25
14	0,19	320	1300	-20°/+100°	25
38	0,39	320	1300	-20°/+100°	25
12	0,68	320	1300	-20°/+100°	25
34	1,13	320	1300	-20°/+100°	25

### SEAL KIT ON THE NEEDLE

TYPE	OR	BK
18	2018	2018
14	2021	2021
38	108	108
12	2043	2043
34	115	115

### SEAL KIT ON THE SEATING

TYPE	(1) OR	(2) BK
18	2043	BK 14 (FT)
14	2043	BK 14 (FT)
38	2050	BK 38 (FT)
12	2062	BK 12 (FT)
34	130	BK 34 (FT)



# SEATING MACHINING DRAWINGS FOR GAS THREADED VALVES



FT 264/2



TYPE	ORM	ØA	ØB	ØC	D	E	ØF	ØG	ØH	L	M	N	P	Q	R1	R2	α°
18	0180-25	32	24	1/2" GAS	1,9	14	5	5	14	29	1	14	17,5	1,5	0,1	0,75	70°
14	0180-25	32	24	1/2" GAS	1,9	14	5	5	14	29	1	14	17,5	1,5	0,1	0,75	70°
38	0180-25	32	24	1/2" GAS	1,9	16,5	8	8	16	33	1	14	20,5	1,5	0,1	0,75	70°
12	0250-25	37	30	3/4" GAS	1,9	24	10	10	19	42	1	21	29	1,5	0,1	0,75	70°
34	0300-30	47	36	1" GAS	2,4	24,5	12	12	27	46	1	21	30	1,5	0,1	0,75	70°