

MATERIALS

BODY	11 S MN Pb 30 - UNI EN 10087
NEEDLE	38 NI CR MO 4 - UNI - EN 10083
OR	NITRILE
ANTIEXTRUSION RING	PTFE
CHECK VALVE	38 NI CR MO 4 - UNI - EN 10083
SPRING	C85 - UNI EN 10089
KNOB	GD AL SI 12 - UNI EN AB 46100
KNOB (MP)	ABS

EXAMPLE FOR ORDERING

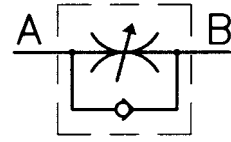
	CODE	TYPE	VITON SEAL	KNOB IN PLASTIC
STEEL	FT 266/5	34	V	MP
STAINLESS STEEL	FT 2266/5	34	-	MP

SEAL KIT ON THE SEATING

TYPE	1 (OR)	2 (BK)	(3)
34	2037	266/6.022.00.1-34	2068
78	2050	267/2.022.00.1-38	3075

DIMENSIONS

TYPE	ØA UNI 4534	ØB	C	D	E	ØF	G	H	L	CH	WEIGHT KG
34	3/4"-16 UNF	12,7	15,3	12,7	28	27	40,7	68,7	6	24	0,112
78	7/8"-14 UNF	15,8	17,5	15	32,5	33	46	78,5	8	27	0,115



CARTRIDGE MOUNTED SINGLE-ACTING CONTROL VALVES MAX 350 BAR

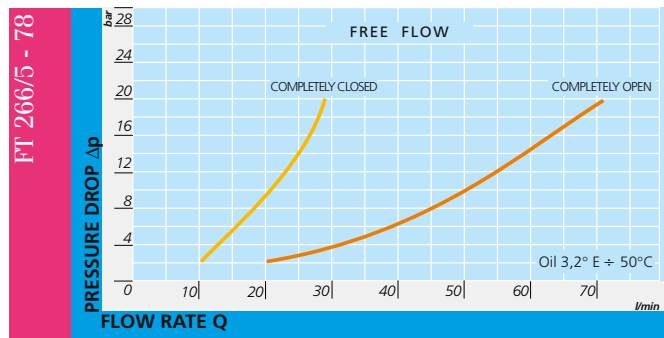
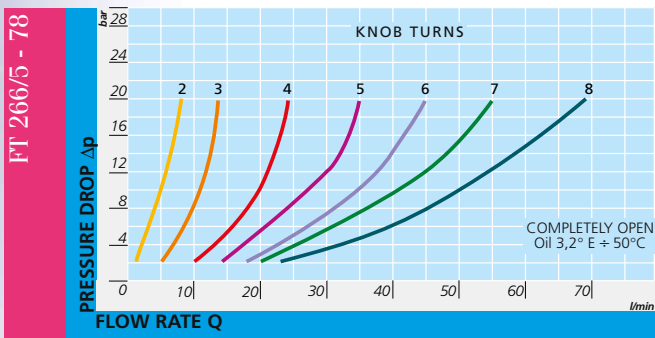
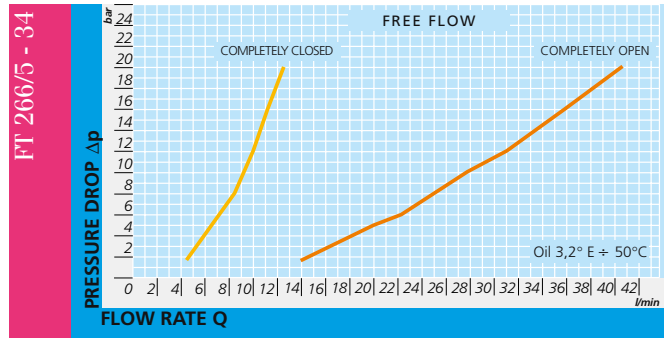
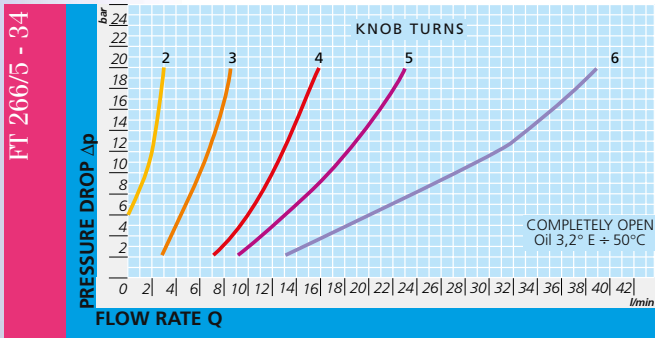
They control and eventually shut-off the flow in one direction, allowing a free return in the opposed direction.

On request

- Complete with Viton seals (V)
- Knob in ABS (mp)
- AISI 316 Stainless steel version FT 2266/5



FT 266/5-UNF

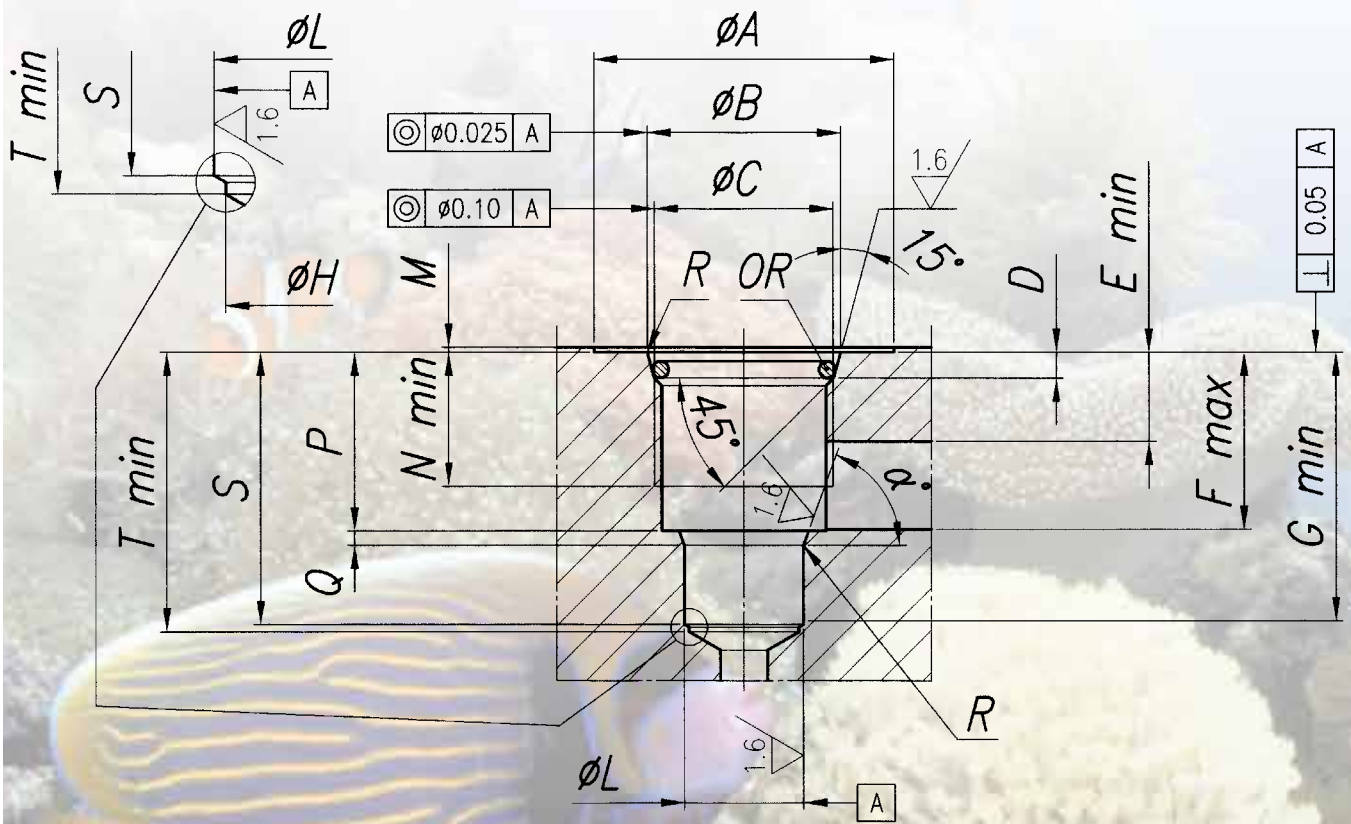


TECHNICAL DATA

TYPE	FLOW SECTION cm^2	MAX. WORKING PRESSURE BAR	MIN. BURSTING PRESSURE BAR	WORKING TEMPERATURE $^{\circ}C$	FILTRATION GRADE μm ABSOLUTE
34	0,20	320	1300	-20°/+100°	25
78	0,50	320	1300	-20°/+100°	25



Sealing realized
with OR seals
on conical seating
for UNF threads



DRAWING OF CAVITY MACHINE FOR CARTRIDGE MOUNTED VALVES



FT 265/2 - 266/2 - 266/5 - 266/6 - 268/2

CONICAL SEATING FOR OR FT 265/2 - FT 266/2 FT 266/5 - FT266/6 - 268/2

TYPE	∅A	∅B	^C UNI 4534	D	E	F	G	∅H	∅L
34	32 \pm 0,4	20,65 \pm 0,1	3/4"-16UNF-2B	2,75	9,5	18,9	28,6	11,7	12,7 $^{+0,05}_{-0}$
78	32 \pm 0,4	24 \pm 0,1	7/8"-14UNF-2B	2,75	12,35	24,25	31,85	15	15,875 $^{+0,05}_{-0}$

CONICAL SEATING FOR OR FT 265/2 - FT 266/2 FT 266/5 - FT266/6 - 268/2

TYPE	M	N	P	Q	R	S	T	α°	OR
34	0,5	14,3	19,05 \pm 0,13	1,53 \pm 0,08	0,1 $^{+0,15}_{-0}$	29 \pm 0,4	29,8	70°	2068
78	0,5	15,75	24,45 \pm 0,1	1,4 \pm 0,1	0,1 $^{+0,15}_{-0}$	33,75 \pm 0,4	34,5	60°	3075