

SERIE 0.5VP - 0.5VP SERIES

COME ORDINARE - HOW TO ORDER

0.5V	P	Cilindrata Size	Rotazione Rotation	Bocche Ports	Albero Shaft	Flangia Flange	Pos. bocche Port position	Guarnizioni Seals	Opzioni Options
Serie Series	Pompa pump	0.19	D Destrosa CW	Z0	G0	B0	-	-	-
		0.26	S Sinistrosa CCW	L0	C0	B1	A	B	-
		0.38	R Revers.le Reversible	L1		A0	B	V	-
		0.50		L2		A1	C	H	-
		0.65				B2	D	T	-
		0.75					R	N	
		0.88							
		1.00							
		1.25							
		1.50							
		1.75							
		2.0							

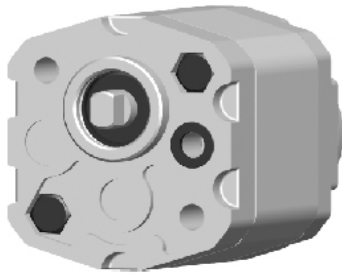
Posizione bocche - Port position

- Aspirazione laterale - Mandata laterale / *side Inlet - side Outlet*
- A** Aspirazione frontale - Mandata frontale / *front Inlet - front Outlet*
- B** Aspirazione posteriore - Mandata frontale / *back Inlet - front Outlet*
- C** Aspirazione posteriore - Mandata laterale / *back Inlet - side Outlet*
- D** Aspirazione laterale - Mandata frontale / *side Inlet - front Outlet*
- R** Aspirazione e Mandata posteriore / *back Inlet - back Outlet*

Guarnizioni - Seals

- Buna (-10°C + 80°C) - Max pressione in Aspirazione 3 bar assoluti / *Inlet pressure up to 3 bar absolute*
- V** Viton (-10°C + 120°C) - Max pressione in Aspirazione 3 bar assoluti / *Inlet pressure up to 3 bar absolute*
- H** Silicon (-40°C + 80°C) - Max pressione in Aspirazione 3 bar assoluti / *Inlet pressure up to 3 bar absolute*
- T** Buna (-10°C + 80°C) - Max pressione in Aspirazione 6 bar assoluti / *Inlet pressure up to 6 bar absolute*
- N** Buna (-10°C + 80°C) - Max pressione in Aspirazione 10 bar assoluti / *Inlet pressure up to 10 bar absolute*

0.5VP..D - L0 G0 B0



Aspirazione posteriore filetto da 1/4" BSPP
profondità utile 12mm

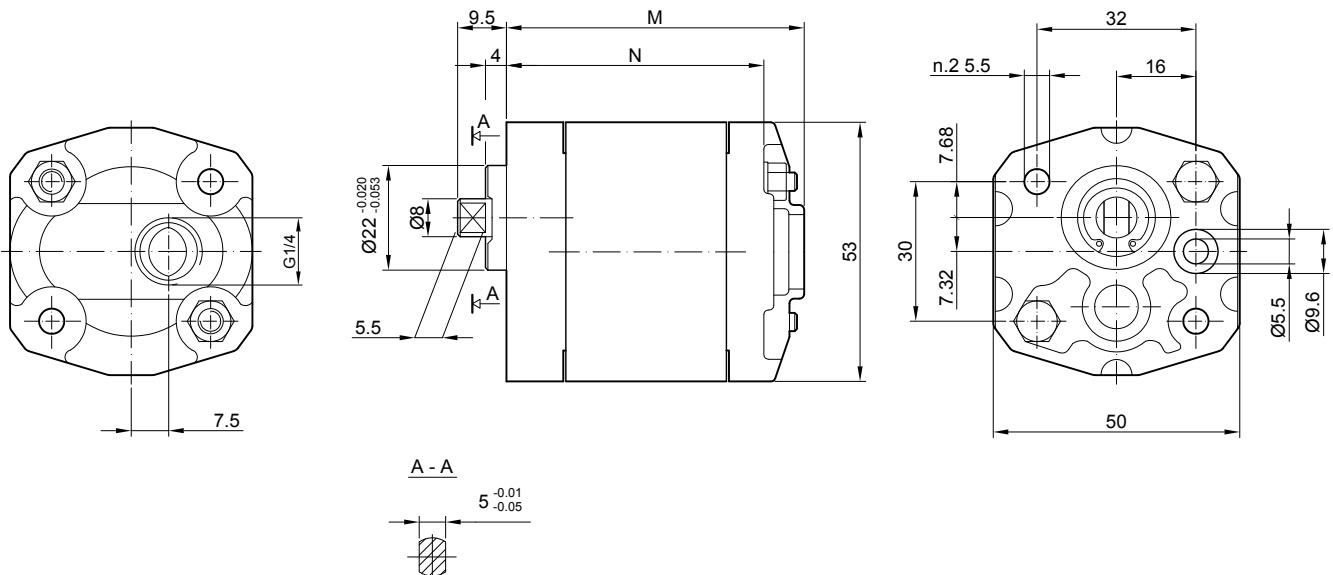
End cover 1/4" BSPP thread depth 12 mm

Assemblaggio con 4 tiranti da M5 coppia di
serraggio 5.4 ± 0.5 Nm

To mount the pump n. 4 M5 screws with a
torque wrench settings fixed at 5.4 ± 0.5
Nm

ASPIRAZIONE
INLET

MANDATA
OUTLET



Tipo Type	Cilindrata Displacement (cm ³ /rev)	Pressione massima Max pressure			Velocità Massima Max. speed (r/min)	Velocità minima Min. speed (r/min)	Dimensioni Dimensions	
		P1 bar	P2 bar	P3 bar			M mm	N mm
0.5VP 0.19 D	0.19	200	230	250	7000	1000	60	51
0.5VP 0.26 D	0.26	200	230	250	7000	1000	60.5	51.5
0.5VP 0.38 D	0.38	200	230	250	7000	1000	61.5	52.5
0.5VP 0.50 D	0.50	200	230	250	7000	1000	62.5	53.5
0.5VP 0.65 D	0.65	200	230	250	7000	1000	63.5	54.5
0.5VP 0.75 D	0.75	200	230	250	7000	1000	64.5	55.5
0.5VP 0.88 D	0.88	200	230	250	7000	1000	65.5	56.5
0.5VP 1.00 D	1.00	200	230	250	6000	850	66.5	57.5
0.5VP 1.25 D	1.25	200	230	250	5000	700	68.5	59.5
0.5VP 1.50 D	1.50	200	230	250	4000	600	70.5	61.5
0.5VP 1.75 D	1.75	180	210	230	4000	600	72.5	63.5
0.5VP 2.00 D	2.00	160	190	210	3000	500	74.5	65.5

0.5VP..D - L2 G0 B1



Aspirazione / mandata laterale filetto da 1/4"
BSPP profondità utile 9 mm

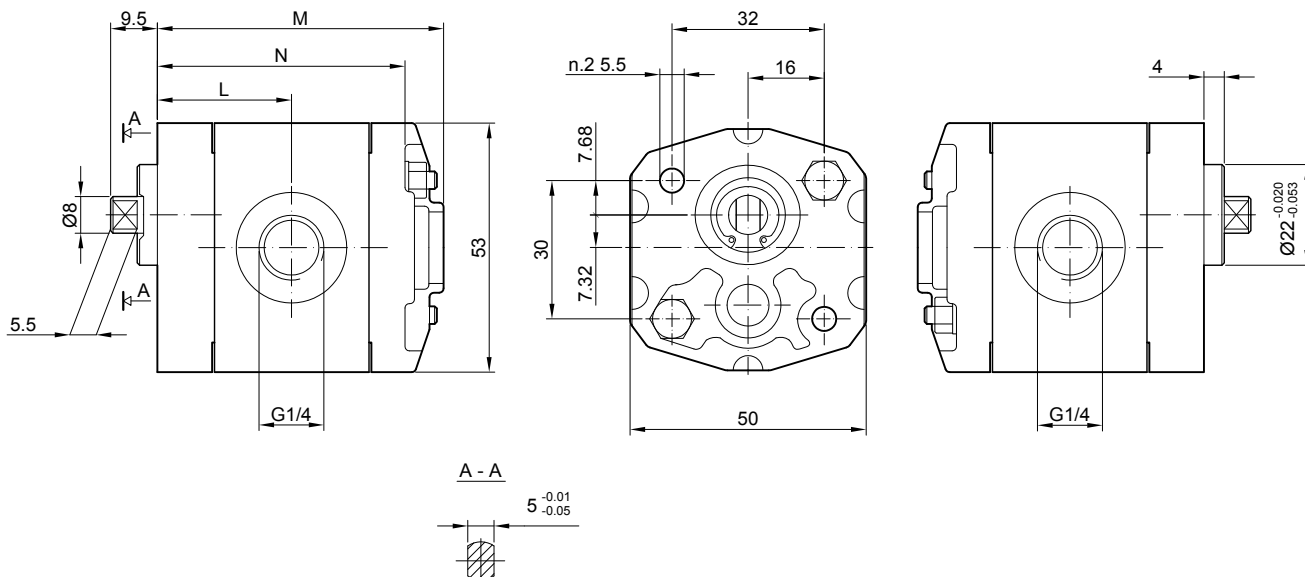
Lateral inlet / outlet 1/4" BSPP thread
depth 9 mm

Assemblaggio con 4 tiranti da M5 coppia di
serraggio 5.4 ± 0.5 Nm

To mount the pump n. 4 M5 screws with a
torque wrench settings fixed at 5.4 ± 0.5
Nm

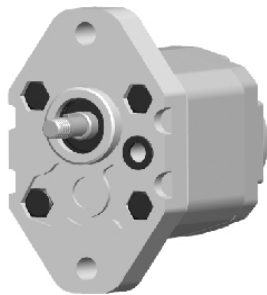
ASPIRAZIONE
INLET

MANDATA
OUTLET



Tipo Type	Cilindrata Displacement (cm ³ /rev)	Pressione massima Max pressure			Velocità Massima Max. speed (r/min)	Velocità minima Min. speed (r/min)	Dimensioni Dimensions		
		P1 bar	P2 bar	P3 bar			M mm	L mm	N mm
0.5VP 0.19 D	0.19	200	230	250	7000	1000	60	27.2	51
0.5VP 0.26 D	0.26	200	230	250	7000	1000	60.5	27.5	51.5
0.5VP 0.38 D	0.38	200	230	250	7000	1000	61.5	28	52.5
0.5VP 0.50 D	0.50	200	230	250	7000	1000	62.5	28.5	53.5
0.5VP 0.65 D	0.65	200	230	250	7000	1000	63.5	29	54.5
0.5VP 0.75 D	0.75	200	230	250	7000	1000	64.5	29.5	55.5
0.5VP 0.88 D	0.88	200	230	250	7000	1000	65.5	30	56.5
0.5VP 1.00 D	1.00	200	230	250	6000	850	66.5	30.5	57.5
0.5VP 1.25 D	1.25	200	230	250	5000	700	68.5	31.5	59.5
0.5VP 1.50 D	1.50	200	230	250	4000	600	70.5	32.5	61.5
0.5VP 1.75 D	1.75	180	210	230	4000	600	72.5	33.5	63.5
0.5VP 2.00 D	2.00	160	190	210	3000	500	74.5	34.5	65.5

0.5VP..D - L0 C0 A0



Aspirazione posteriore filetto da 1/4" BSPP
profondità utile 12mm

End cover 1/4" BSPP thread depth 12 mm

Assemblaggio con 4 tiranti da M5 coppia di serraggio 5.4 ± 0.5 Nm

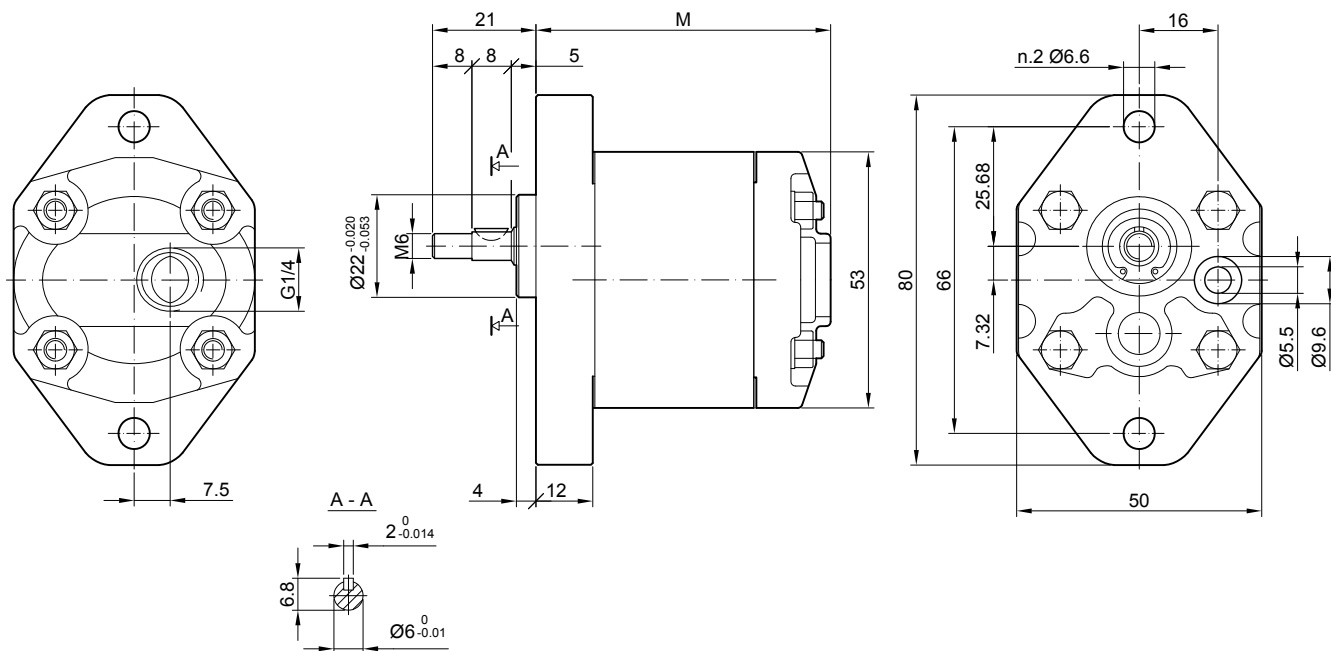
To mount the pump n. 4 M5 screws with a torque wrench settings fixed at 5.4 ± 0.5 Nm

Filetto M6 su albero con coppia di serraggio 7 Nm

Shaft M6 nut, with a torque wrench settings fixed at 7 Nm

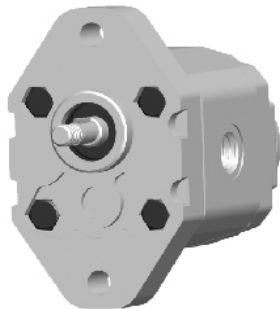
ASPIRAZIONE
INLET

MANDATA
OUTLET



Tipo Type	Cilindrata Displacement (cm ³ /rev)	Pressione massima Max pressure			Velocità Massima Max. speed (r/min)	Velocità minima Min. speed (r/min)	Dimensioni Dimensions M mm
		P1 bar	P2 bar	P3 bar			
0.5VP 0.19 D	0.19	200	230	250	7000	1000	60
0.5VP 0.26 D	0.26	200	230	250	7000	1000	60.5
0.5VP 0.38 D	0.38	200	230	250	7000	1000	61.5
0.5VP 0.50 D	0.50	200	230	250	7000	1000	62.5
0.5VP 0.65 D	0.65	200	230	250	7000	1000	63.5
0.5VP 0.75 D	0.75	200	230	250	7000	1000	64.5
0.5VP 0.88 D	0.88	200	230	250	7000	1000	65.5
0.5VP 1.00 D	1.00	200	230	250	6000	850	66.5
0.5VP 1.25 D	1.25	200	230	250	5000	700	68.5
0.5VP 1.50 D	1.50	200	230	250	4000	600	70.5
0.5VP 1.75 D	1.75	180	210	230	4000	600	72.5
0.5VP 2.00 D	2.00	160	190	210	3000	500	74.5

0.5VP..D - L2 C0 A1



Aspirazione / mandata laterale filetto da 1/4"
BSPP profondità utile 9 mm

Lateral inlet / outlet 1/4" BSPP thread
depth 9 mm

Assemblaggio con 4 tiranti da M5 coppia di
serraggio 5.4 ± 0.5 Nm

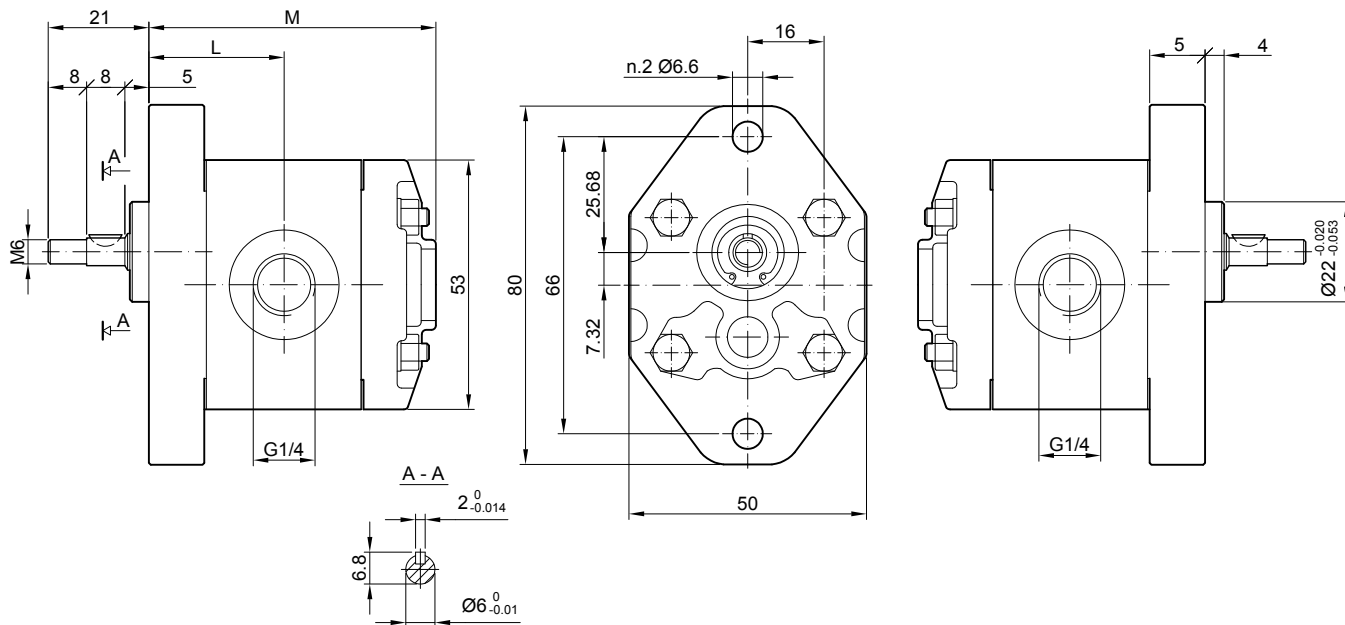
To mount the pump n. 4 M5 screws with a
torque wrench settings fixed at 5.4 ± 0.5
Nm

Filetto M6 su albero con coppia di
serraggio 7 Nm

Shaft M6 nut, with a torque wrench settings
fixed at 7 Nm

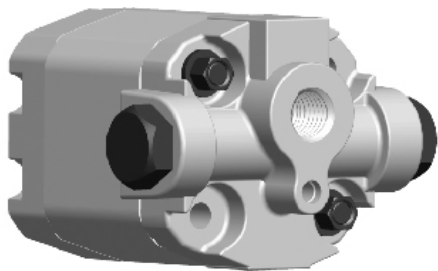
ASPIRAZIONE
INLET

MANDATA
OUTLET



Tipo Type	Cilindrata Displacement (cm ³ /rev)	Pressione massima Max pressure			Velocità Massima Max. speed (r/min)	Velocità minima Min. speed (r/min)	Dimensioni Dimensions	
		P1 bar	P2 bar	P3 bar			M mm	L mm
0.5VP 0.19 D	0.19	200	230	250	7000	1000	60	27.2
0.5VP 0.26 D	0.26	200	230	250	7000	1000	60.5	27.5
0.5VP 0.38 D	0.38	200	230	250	7000	1000	61.5	28
0.5VP 0.50 D	0.50	200	230	250	7000	1000	62.5	28.5
0.5VP 0.65 D	0.65	200	230	250	7000	1000	63.5	29
0.5VP 0.75 D	0.75	200	230	250	7000	1000	64.5	29.5
0.5VP 0.88 D	0.88	200	230	250	7000	1000	65.5	30
0.5VP 1.00 D	1.00	200	230	250	6000	850	66.5	30.5
0.5VP 1.25 D	1.25	200	230	250	5000	700	68.5	31.5
0.5VP 1.50 D	1.50	200	230	250	4000	600	70.5	32.5
0.5VP 1.75 D	1.75	180	210	230	4000	600	72.5	33.5
0.5VP 2.00 D	2.00	160	190	210	3000	500	74.5	34.5

0.5VP..R - L0 G0 B2 - VQ1



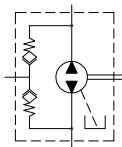
Aspirazione posteriore da 1/4" BSPP, profondità utile 12mm

End cover 1/4" BSPP thread depth 12 mm

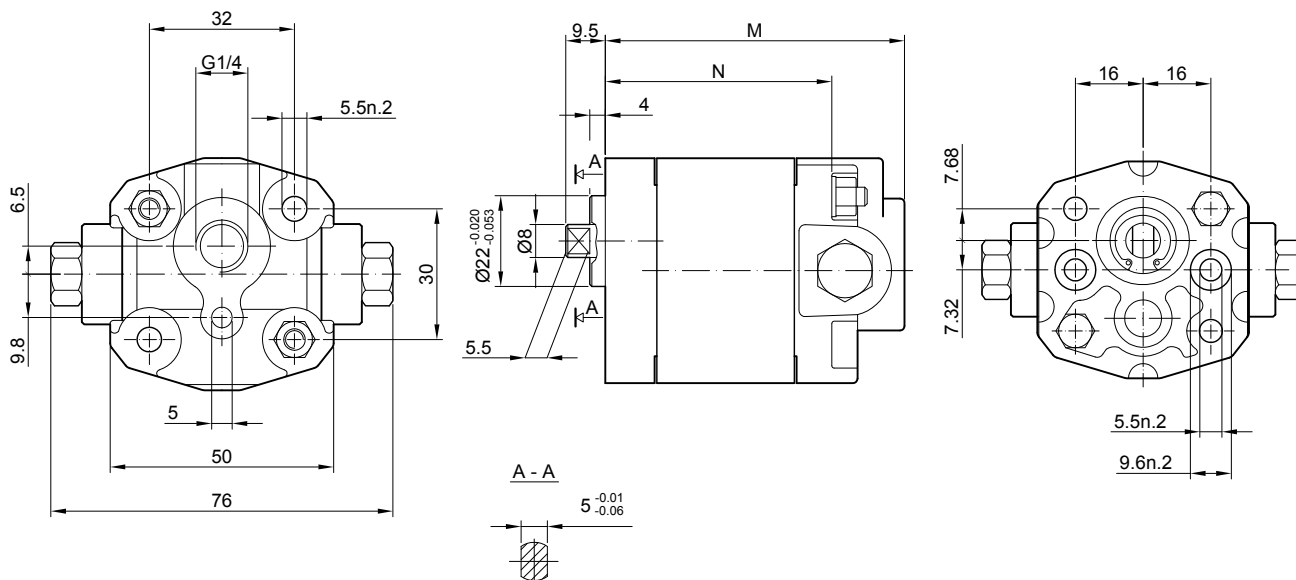
Assemblaggio con 4 tiranti da M5 coppia di serraggio 5.4 ± 0.5 Nm

To mount the pump n. 4xM5 screws with a torque wrench settings fixed at 5.4 ± 0.5 Nm

ASPIRAZIONE
INLET



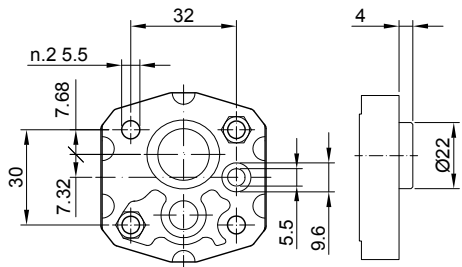
MANDATA
OUTLET



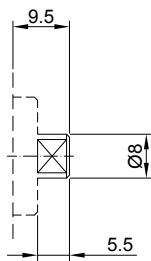
Tipo Type	Cilindrata Displacement (cm ³ /rev)	Pressione massima Max pressure			Velocità Massima Max. speed (r/min)	Velocità minima Min. speed (r/min)	Dimensioni Dimensions	
		P1 bar	P2 bar	P3 bar			M mm	N mm
0.5VP 0.19 R	0.19	150	170	190	7000	1000	68	51
0.5VP 0.26 R	0.26	150	170	190	7000	1000	68.5	51.5
0.5VP 0.38 R	0.38	150	170	190	7000	1000	69.5	52.5
0.5VP 0.50 R	0.50	150	170	190	7000	1000	70.5	53.5
0.5VP 0.65 R	0.65	150	170	190	7000	1000	71.5	54.5
0.5VP 0.75 R	0.75	150	170	190	7000	1000	72.5	55.5
0.5VP 0.88 R	0.88	150	170	190	7000	1000	73.5	56.5
0.5VP 1.00 R	1.00	150	170	190	6000	850	74.5	57.5
0.5VP 1.25 R	1.25	150	170	190	5000	700	76.5	59.5
0.5VP 1.50 R	1.50	150	170	190	4000	600	78.5	61.5
0.5VP 1.75 R	1.75	150	170	190	4000	600	80.5	63.5
0.5VP 2.00 R	2.00	150	170	190	3000	500	82.5	65.5

SERIE 0.5VP - 0.5VP SERIES

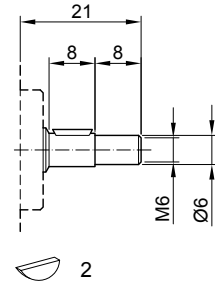
FLANGE / FRONT COVERS



B0



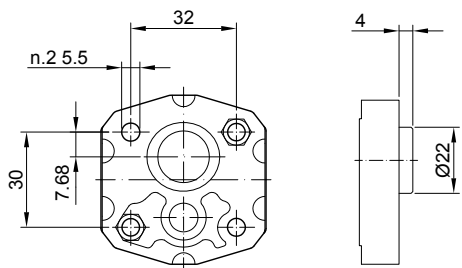
G0



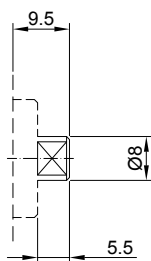
C0

Coppia max 10 Nm
Max. torque 10 Nm

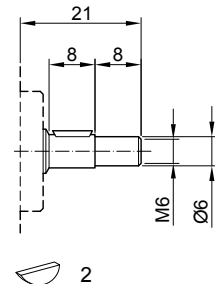
Coppia max 8 Nm
Max. torque 8 Nm



B1



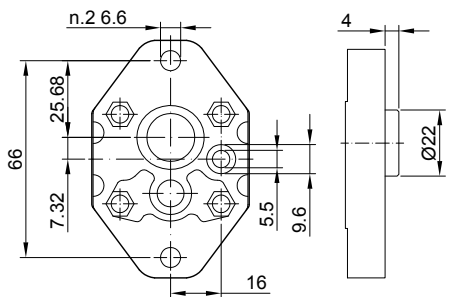
G0



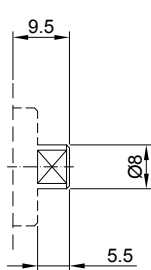
C0

Coppia max 10 Nm
Max. torque 10 Nm

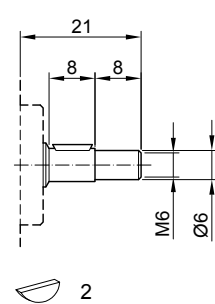
Coppia max 8 Nm
Max. torque 8 Nm



A0



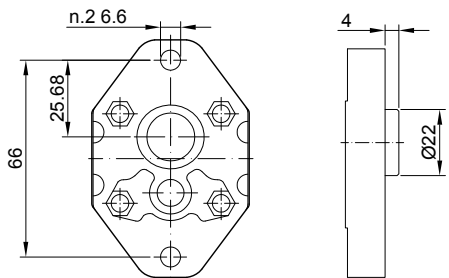
G0



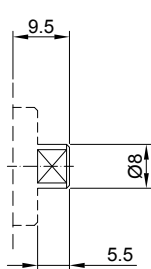
C0

Coppia max 10 Nm
Max. torque 10 Nm

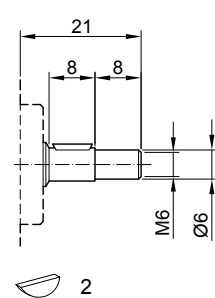
Coppia max 8 Nm
Max. torque 8 Nm



A1



G0



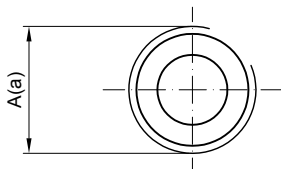
C0

Coppia max 10 Nm
Max. torque 10 Nm

Coppia max 8 Nm
Max. torque 8 Nm

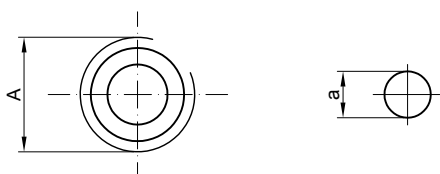
SERIE 0.5VP - 0.5VP SERIES

BOCCHE / PORTS



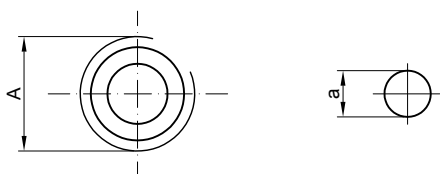
Z0

Tipo Type	Aspirazione Inlet	Mandata Outlet
	A	a
0.5VP 0.19 ÷ 2.00	M10x1	M10x1



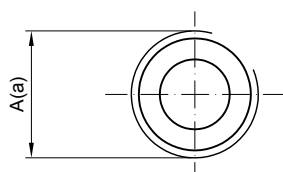
L0

Tipo Type	Aspirazione Inlet	Mandata Outlet
	A	a
0.5VP 0.19 ÷ 2.00	G1/4	ø5.5



L1

Tipo Type	Aspirazione Inlet	Mandata Outlet
	A	a
0.5VP 0.19 ÷ 2.00	G3/8	ø5.5



L2

Tipo Type	Aspirazione Inlet	Mandata Outlet
	A	a
0.5VP 0.19 ÷ 2.00	G1/4	G1/4