

SERIE 1.5VP - 1.5VP SERIES

COME ORDINARE - HOW TO ORDER

1.5V	P	Cilindrata Size	Rotazione Rotation	Bocche Ports	Albero Shaft	Flangia Flange	Pos. bocche Port position	Guarnizioni Seals	Opzioni Options
Serie Series	Pompa pump	1.4	D Destrosa CW	E0	T0	B0	-	-	-
		2.1	S Sinistrosa CCW	L0/L1	C1	A0	A	V	
		2.8		R0/R1/R2	G0	Q0	B	H	
		3.5		U0/U1	C0		C	T	
		4.1			S0		D	N	
		5.2			C2		R		
		6.2			S1				
		7.6			G1				
		9.3							
		11.0							
		13.8							

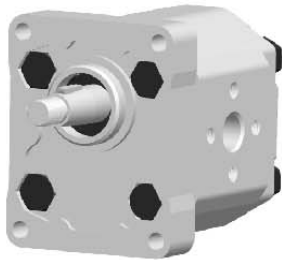
Posizione bocche - Port position

- Aspirazione laterale - Mandata laterale / *side Inlet - side Outlet*
- A** Aspirazione frontale - Mandata frontale / *front Inlet - front Outlet*
- B** Aspirazione posteriore - Mandata frontale / *back Inlet - front Outlet*
- C** Aspirazione posteriore - Mandata laterale / *back Inlet - side Outlet*
- D** Aspirazione laterale - Mandata frontale / *side Inlet - front Outlet*
- R** Aspirazione e Mandata posteriore / *back Inlet - back Outlet*

Guarnizioni - Seals

- Buna (-10°C + 80°C) - Max pressione in Aspirazione 3 bar assoluti / *Inlet pressure up to 3 bar absolute*
- V** Viton (-10°C + 120°C) - Max pressione in Aspirazione 3 bar assoluti / *Inlet pressure up to 3 bar absolute*
- H** Silicon (-40°C + 80°C) - Max pressione in Aspirazione 3 bar assoluti / *Inlet pressure up to 3 bar absolute*
- T** Buna (-10°C + 80°C) - Max pressione in Aspirazione 6 bar assoluti / *Inlet pressure up to 6 bar absolute*
- N** Buna (-10°C + 80°C) - Max pressione in Aspirazione 10 bar assoluti / *Inlet pressure up to 10 bar absolute*

1.5VP..D - E0 TO B0



Filetti bocche M6x13 mm

Ports thread M6x13 mm

Assemblaggio con 4 tiranti da M8 coppia di serraggio 27 ± 3 Nm

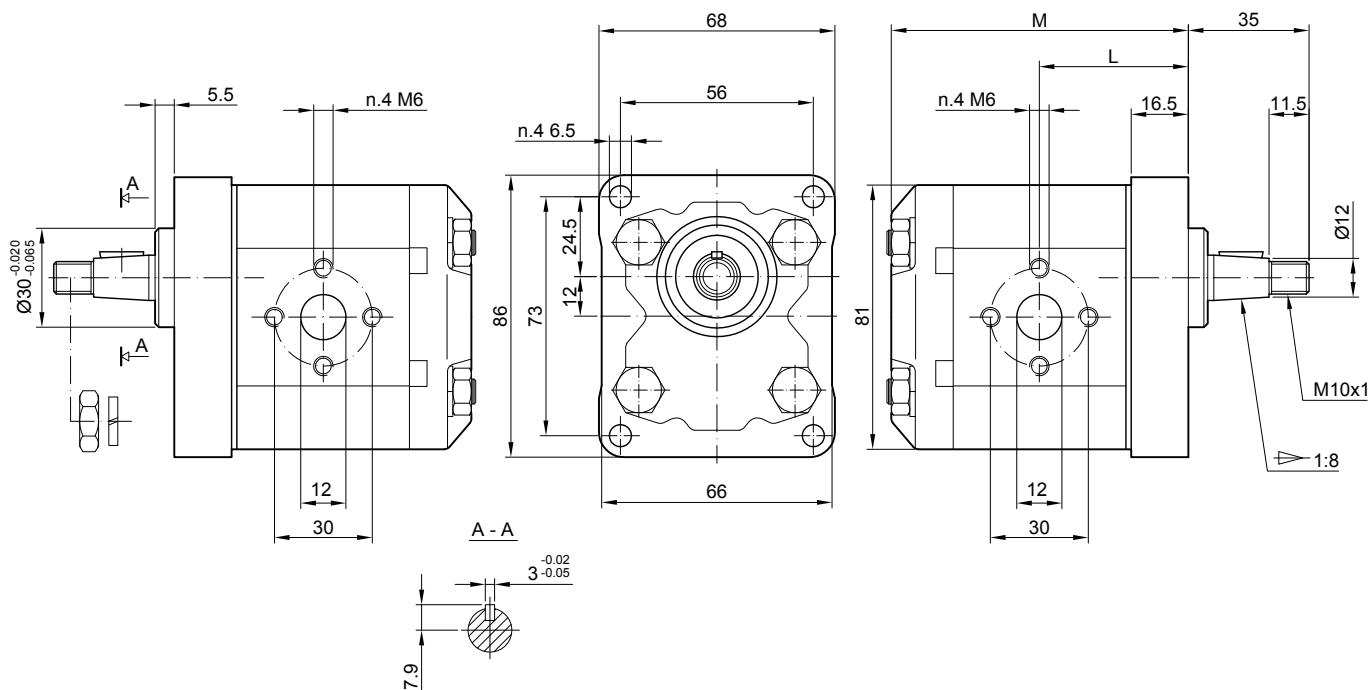
To mount the pump n.4 x M8 screws with a torque wrench settings fixed at 27 ± 3 Nm

Filetto M10 su albero con coppia di serraggio 40 Nm

Shaft M10 nut, with a torque wrench settings fixed at 40 Nm

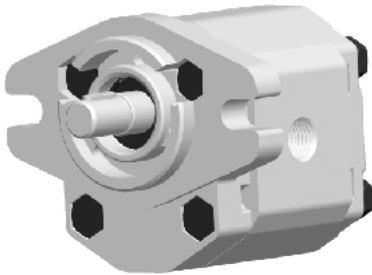
MANDATA
OUTLET

ASPIRAZIONE
INLET



Tipo Type	Cilindrata Displacement (cm ³ /rev)	Pressione massima Max pressure			Velocità Massima Max. speed (r/min)	Velocità minima Min. speed (r/min)	Dimensioni Dimensions	
		P1 bar	P2 bar	P3 bar			M mm	L mm
1.5VP 1.4 D	1.4	250	270	290	6000	800	80.5	40
1.5VP 2.1 D	2.1	250	270	290	6000	800	82.5	41
1.5VP 2.8 D	2.8	250	270	290	5000	800	84.5	42
1.5VP 3.5 D	3.5	250	270	290	5000	800	86.5	43
1.5VP 4.1 D	4.1	250	270	290	4000	800	88.5	44
1.5VP 5.2 D	5.2	230	245	260	4000	800	91.5	45.5
1.5VP 6.2 D	6.2	230	245	260	3800	800	94.5	47
1.5VP 7.6 D	7.6	200	215	230	3200	600	98.5	49
1.5VP 9.3 D	9.3	180	195	210	2600	600	103.5	51.5
1.5VP 11 D	11.0	170	185	200	2200	600	108.5	54
1.5VP 13.8 D	13.8	150	165	180	1800	600	116.5	58

1.5VP..D - R. C0 A0



Bocche di aspirazione e mandata filettate SAE coniche.

Inlet and outlet port SAE taper threaded

Assemblaggio con 4 tiranti da M8 coppia di serraggio 27 ± 3 Nm

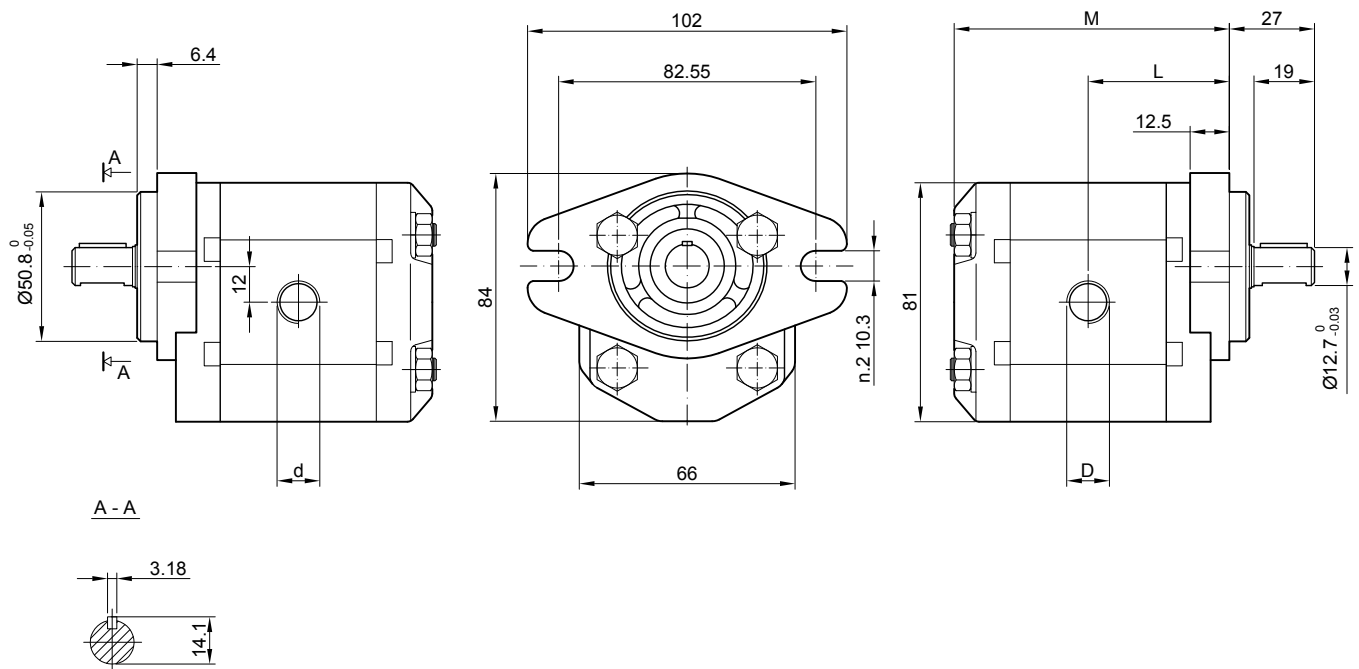
To mount the pump n.4 x M8 screws, with a torque wrench settings fixed at 27 ± 3 Nm

Flangia SAE A-A (J744c)

Mounting flange SAE A-A (J744c)

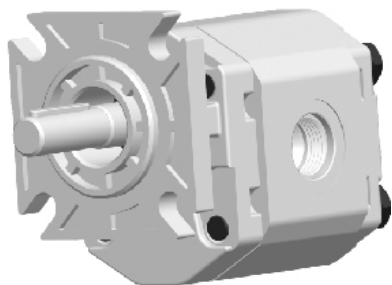
**MANDATA
OUTLET**

**ASPIRAZIONE
INLET**



Tipo Type	Cilindrata Displacement	Pressione massima Max pressure			Velocità Massima Max. speed	Velocità minima Min. speed	Dimensioni Dimensions			
		P1	P2	P3			M	L	D	d
	(cm ³ /rev)	bar	bar	bar	(r/min)	(r/min)	mm	mm		
1.5VP 1.4 D	1.4	250	270	290	6000	800	82.5	42	PT1/2	PT3/8
1.5VP 2.1 D	2.1	250	270	290	6000	800	82.5	43	PT1/2	PT3/8
1.5VP 2.8 D	2.8	250	270	290	5000	800	86.5	44	PT1/2	PT3/8
1.5VP 3.5 D	3.5	250	270	290	5000	800	88.5	45	PT1/2	PT3/8
1.5VP 4.1 D	4.1	250	270	290	4000	800	90.5	46	PT1/2	PT3/8
1.5VP 5.2 D	5.2	230	245	260	4000	800	93.5	47.5	PT1/2	PT3/8
1.5VP 6.2 D	6.2	230	245	260	3500	800	96.5	49	PT1/2	PT3/8
1.5VP 7.6 D	7.6	200	215	230	3000	600	100.5	51	PT3/4	PT1/2
1.5VP 9.3 D	9.3	180	195	210	2500	600	105.5	53.5	PT3/4	PT1/2
1.5VP 11 D	11.0	170	185	200	2500	600	110.5	56	PT3/4	PT1/2
1.5VP 13.8 D	13.8	150	165	180	2000	600	118.5	60	PT3/4	PT1/2

1.5VP..D - U. C2 Q0



Bocche di aspirazione e mandata filettate SAE con tenuta O-ring (SAE J1926/1)

Inlet and outlet port SAE threaded with O-ring seal (SAE J1926/1)

Assemblaggio con 4 tiranti da M8 coppia di serraggio 27 ± 3 Nm

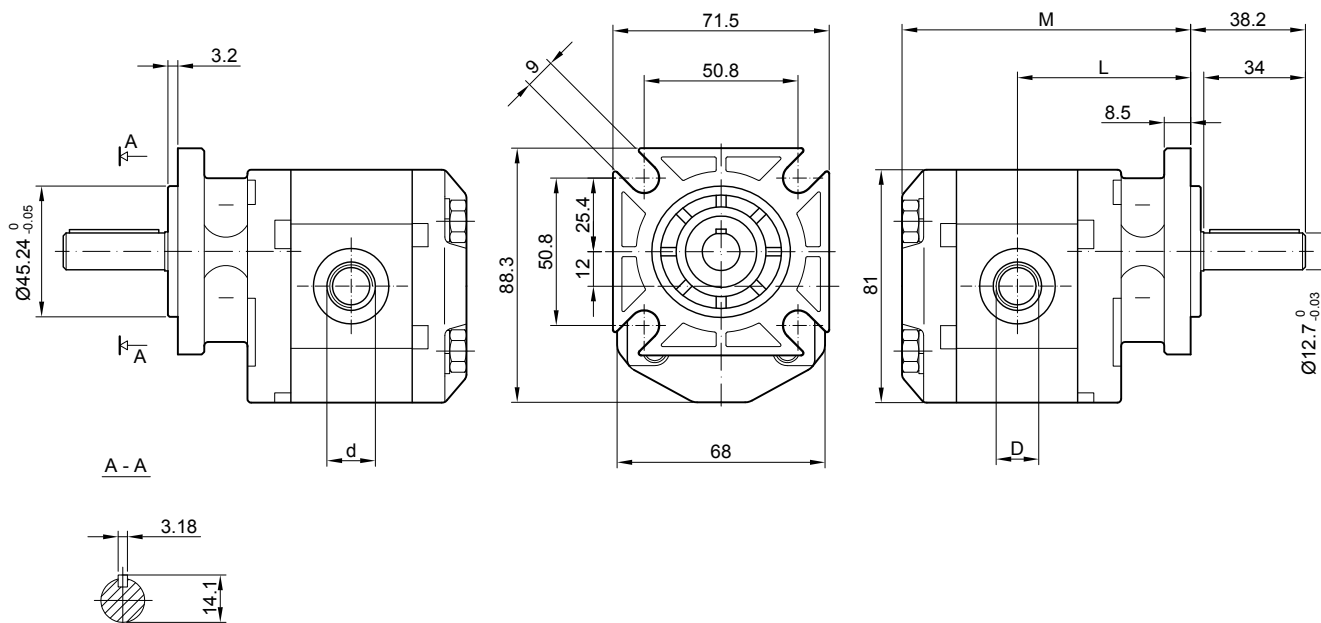
To mount the pump n.4 x M8 screws, with a torque wrench settings fixed at 27 ± 3 Nm

Flangia SAE A-A 4 fori

Mounting flange SAE A-A 4 holes

**MANDATA
OUTLET**

**ASPIRAZIONE
INLET**

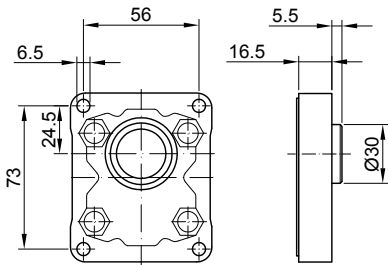


Tipo Type	Cilindrata Displacement (cm ³ /rev)	Pressione massima Max pressure			Velocità Massima Max. speed (r/min)	Velocità minima Min. speed (r/min)	Dimensioni Dimensions			
		P1 bar	P2 bar	P3 bar			M mm	L mm	D	d
1.5VP 1.4 D	1.4	250	270	290	6000	800	98	59	3/4-16UNF	9/16-18UNF
1.5VP 2.1 D	2.1	250	270	290	6000	800	100	60	3/4-16UNF	9/16-18UNF
1.5VP 2.8 D	2.8	250	270	290	5000	800	102	61	3/4-16UNF	9/16-18UNF
1.5VP 3.5 D	3.5	250	270	290	5000	800	104	62	3/4-16UNF	9/16-18UNF
1.5VP 4.1 D	4.1	250	270	290	4000	800	106	63	3/4-16UNF	9/16-18UNF
1.5VP 5.2 D	5.2	230	245	260	4000	800	109	64.5	3/4-16UNF	9/16-18UNF
1.5VP 6.2 D	6.2	230	245	260	3500	800	112	66	3/4-16UNF	9/16-18UNF
1.5VP 7.6 D	7.6	200	215	230	3000	600	116	68	7/8-14UNF	3/4-16UNF
1.5VP 9.3 D	9.3	180	195	210	2500	600	121	70.5	7/8-14UNF	3/4-16UNF
1.5VP 11 D	11.0	170	185	200	2500	600	126	73	7/8-14UNF	3/4-16UNF
1.5VP 13.8 D	13.8	150	165	180	2000	600	134	77	7/8-14UNF	3/4-16UNF

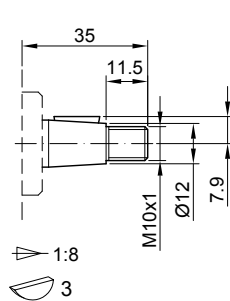
SERIE 1.5VP - 1.5VP SERIES

FLANGE / FRONT COVERS

ALBERI / SHAFTS

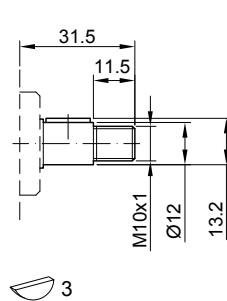


B0



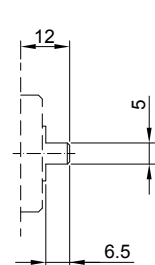
T0

Coppia max 100 Nm
Max. torque 100 Nm



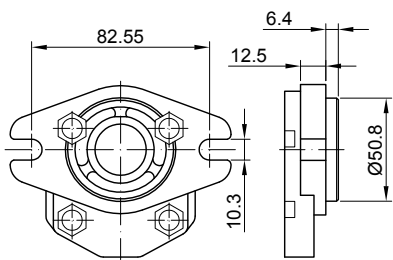
C1

Coppia max 55 Nm
Max. torque 55 Nm

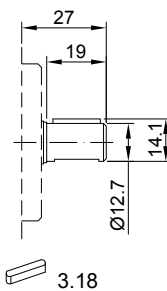


G0

Coppia max 45 Nm
Max. torque 45 Nm

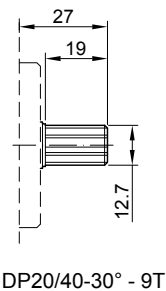


A0



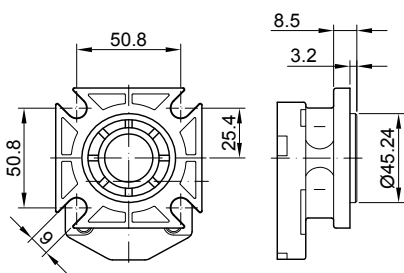
C0

Coppia max 60 Nm
Max. torque 60 Nm

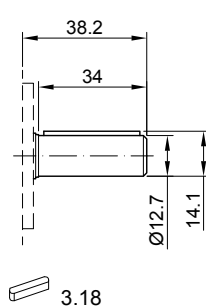


S0

DP20/40-30° - 9T
Coppia max 100 Nm
Max. torque 100 Nm

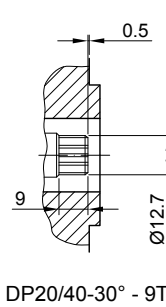


Q0



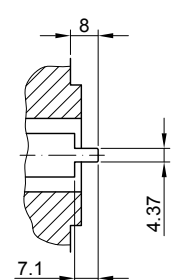
C2

Coppia max 100 Nm
Max. torque 100 Nm



S1

DP20/40-30° - 9T
Coppia max 95 Nm
Max. torque 95 Nm

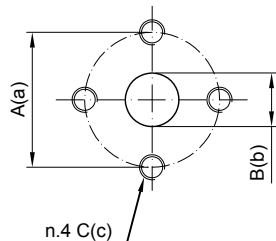


G1

Coppia max 45 Nm
Max. torque 45 Nm

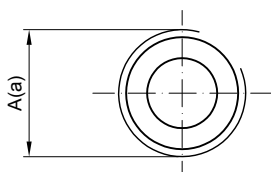
SERIE 1.5VP - 1.5VP SERIES

BOCCHE / PORTS



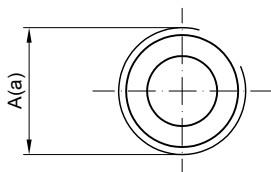
E0

Tipo	Aspirazione			Mandata		
Type	Inlet			Outlet		
	A	B	C	a	b	c
1.5VP 1.4 ÷ 13.8	30	13	M6	30	13	M6



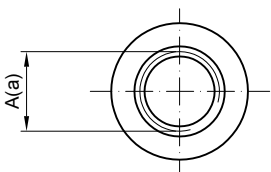
L0/L1

Tipo	Codice bocca	Aspirazione	Mandata
Type	Port code	Inlet	Outlet
		A	a
1.5VP 1.4 ÷ 3.5	L0	G1/2	G3/8
1.5VP 4.1 ÷ 13.8	L1	G1/2	G1/2



R0/R1/R2

Tipo	Codice bocca	Aspirazione	Mandata
Type	Port code	Inlet	Outlet
		A	a
1.5VP 1.4 ÷ 6.2	R0	PT1/2	PT3/8
1.5VP 7.6 ÷ 13.8	R1	PT3/4	PT1/2
1.5VP 1.4 ÷ 13.8	R2	PT1/2	PT1/2

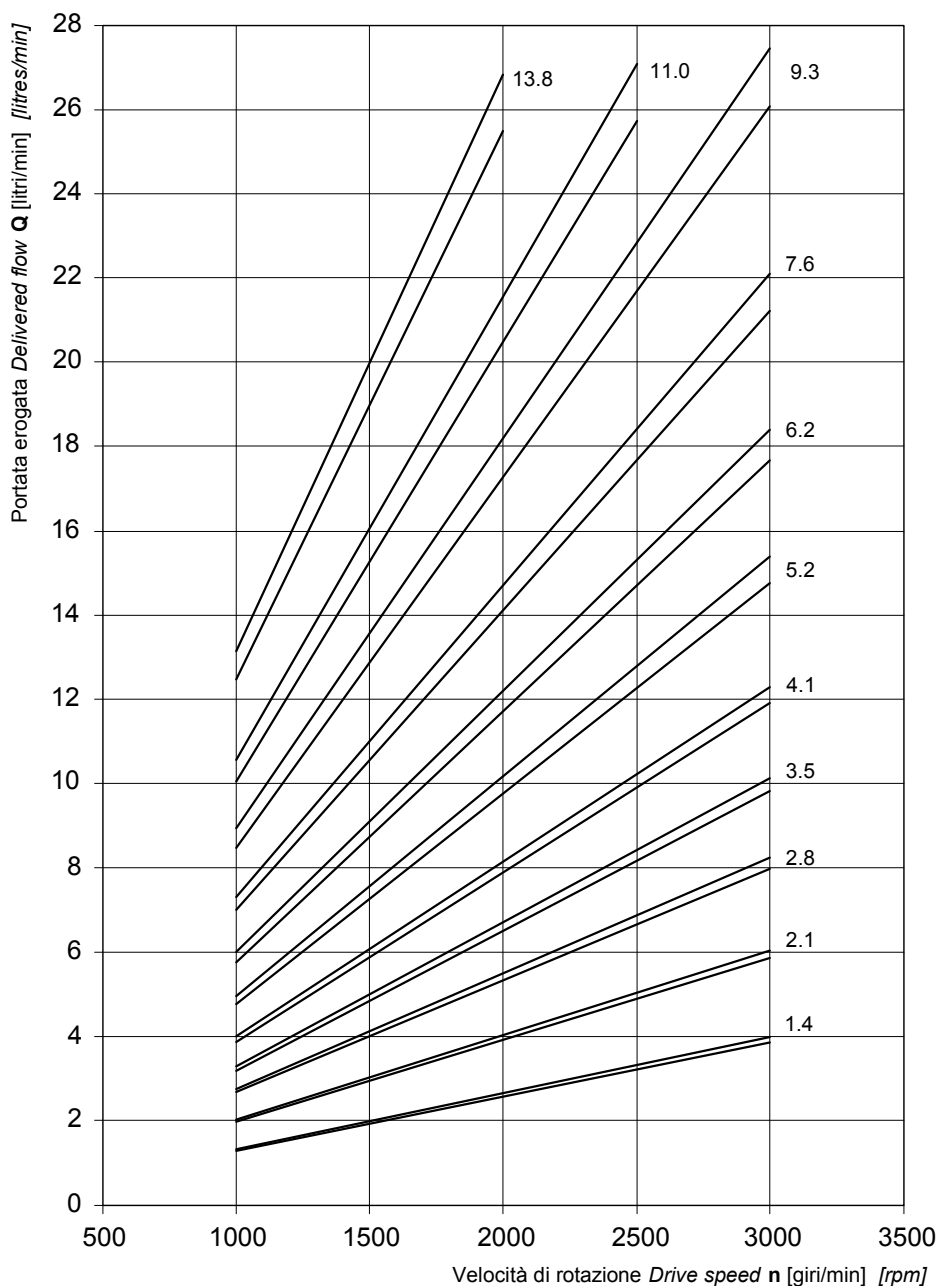


U0/U1

Tipo	Codice bocca	Aspirazione	Mandata
Type	Port code	Inlet	Outlet
		A	a
1.5VP 1.4 ÷ 6.2	U0	3/4-16UNF	9/16-18UNF
1.5VP 7.6 ÷ 13.8	U1	7/8-14UNF	3/4-16UNF

SERIE 1.5VP - 1.5VP SERIES

1.5VP CURVE CARATTERISTICHE / 1.5VP PERFORMANCE CURVES



Le curve sono state ottenute alla temperatura di 50°C, utilizzando olio con viscosità 30 cSt alle pressioni sotto riportate.

Each curve has been obtained at 50 °C, using oil with viscosity 30 cSt at these pressure.

1.4		2.1		2.8		3.5		4.1		5.2		6.2		7.6		9.3		11.0		13.8										
— 25-240 bar																														
— 25-230 bar																														
— 25-220 bar																														

SERIE 1.5VP - 1.5VP SERIES

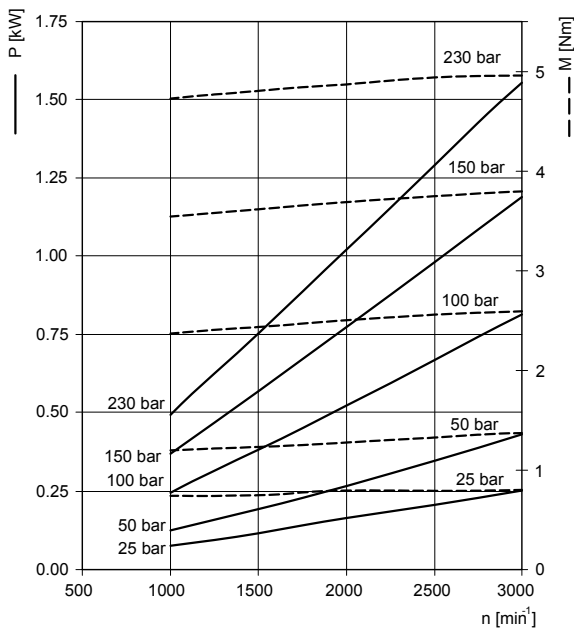
CURVE CARATTERISTICHE / PERFORMANCE CURVES

Potenza assorbita - Absorbed power **P** [kW]

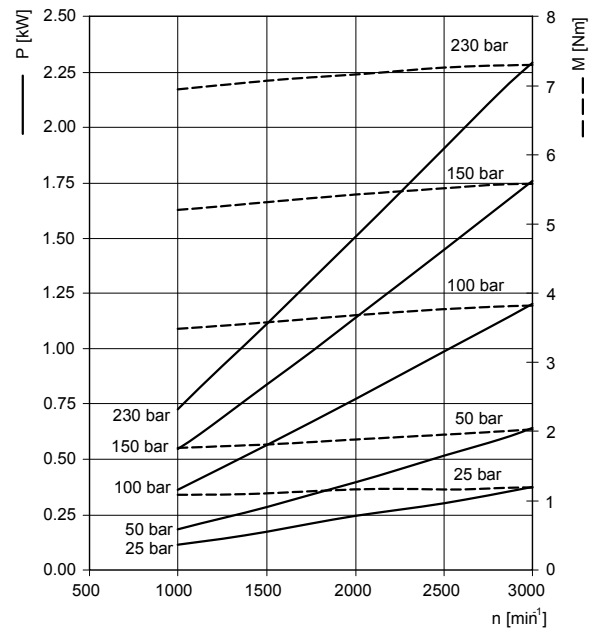
Momento torcente assorbito - Absorbed torque **M** [Nm]

Velocità di rotazione - Drive speed **n** [giri/min] [rpm]

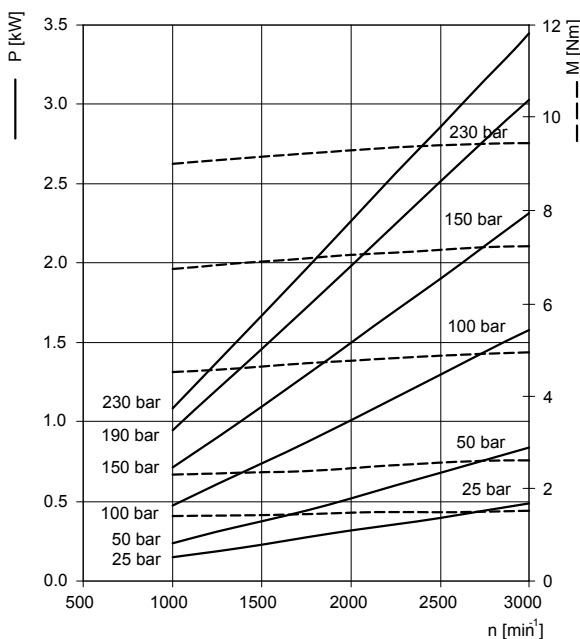
1.5VP 1.4



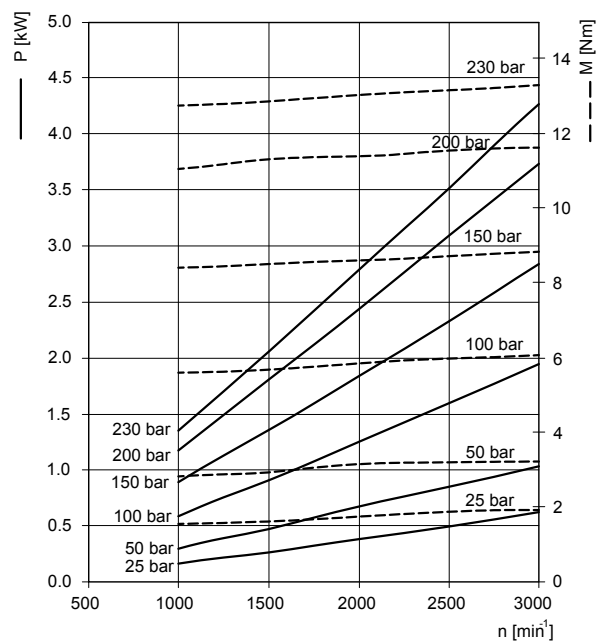
1.5VP 2.1



1.5VP 2.8



1.5VP 3.5

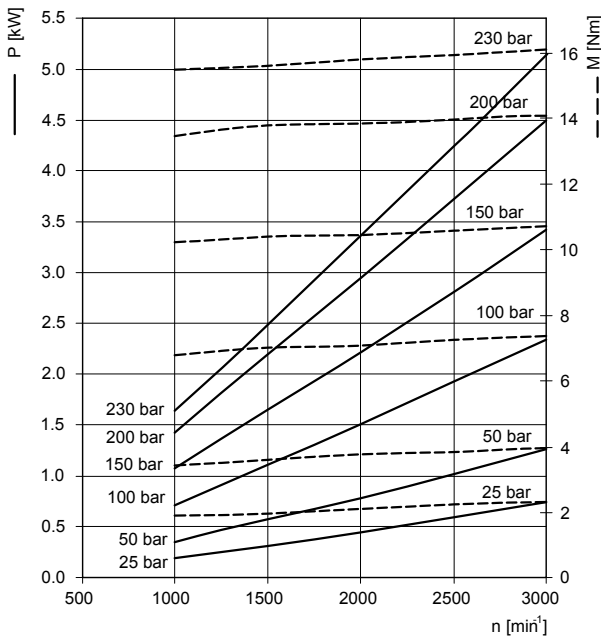


SERIE 1.5VP - 1.5VP SERIES

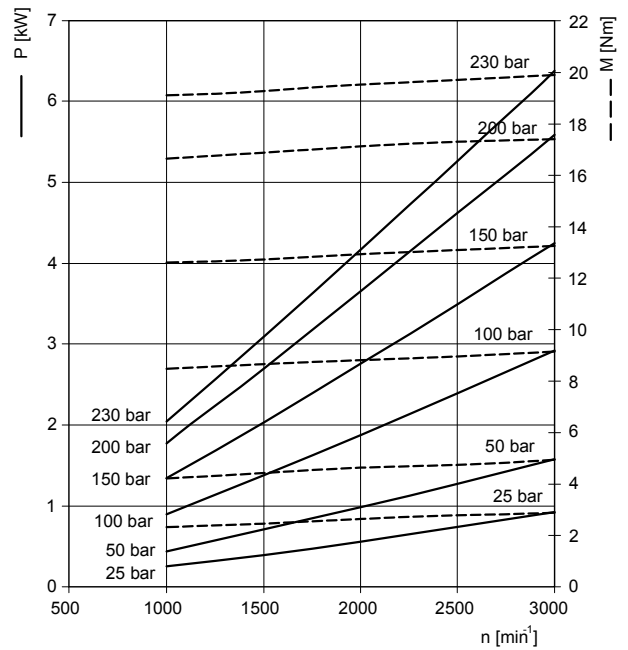
CURVE CARATTERISTICHE / PERFORMANCE CURVES

Potenza assorbita - Absorbed power **P** [kW]
 Momento torcente assorbito - Absorbed torque **M** [Nm]
 Velocità di rotazione - Drive speed **n** [giri/min] [rpm]

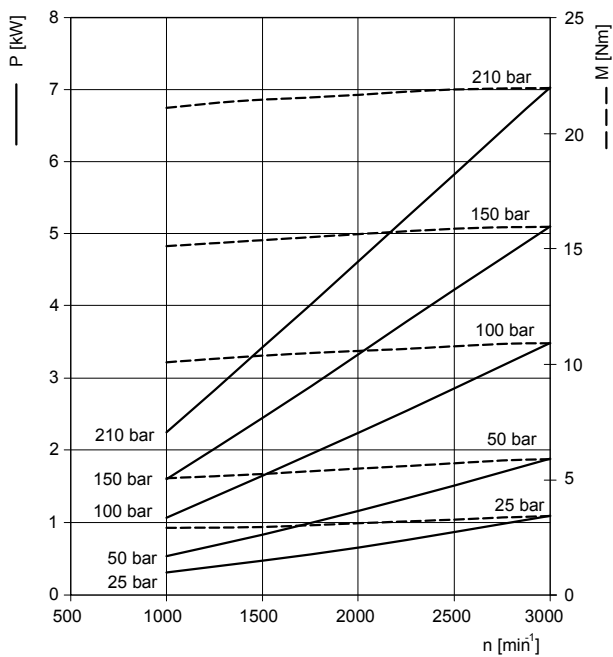
1.5VP 4.1



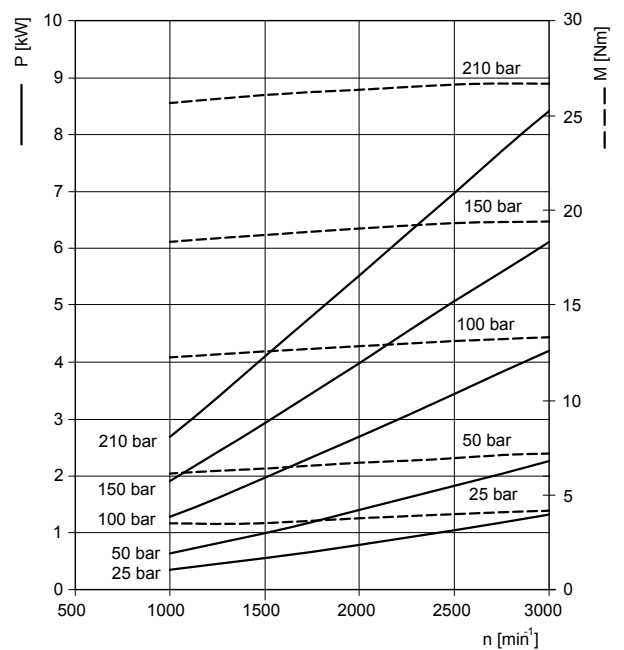
1.5VP 5.2



1.5VP 6.2



1.5VP 7.6



SERIE 1.5VP - 1.5VP SERIES

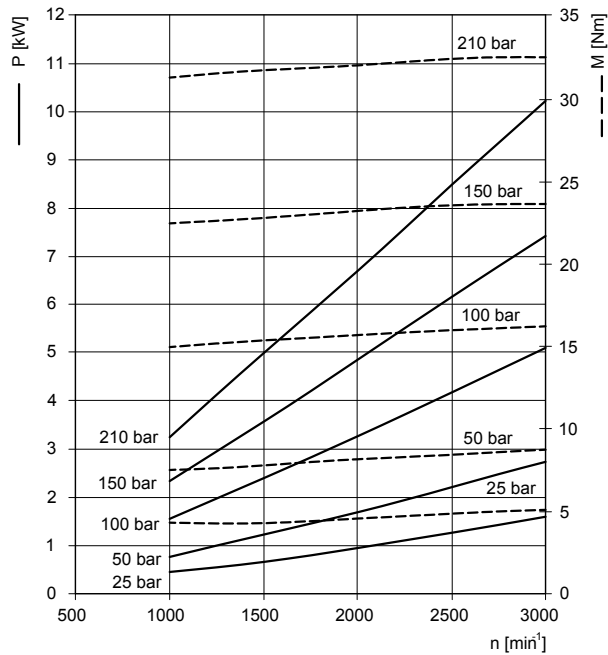
CURVE CARATTERISTICHE / PERFORMANCE CURVES

Potenza assorbita - Absorbed power **P** [kW]

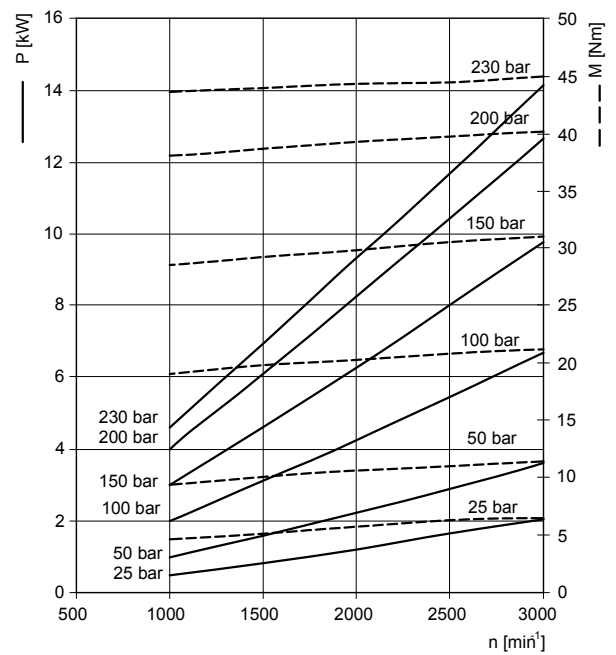
Momento torcente assorbito - Absorbed torque **M** [Nm]

Velocità di rotazione - Drive speed **n** [giri/min] [rpm]

1.5VP 9.3



1.5VP 11.0



1.5VP 13.8

