

SERIE 3VP - 3VP SERIES

COME ORDINARE - HOW TO ORDER

3V	P	Cilindrata Size	Rotazione Rotation	Bocche Ports	Albero Shaft	Flangia Flange	Pos. bocche Port position	Guarnizioni Seals	Opzioni Options
Serie Series	Pompa pump	20	D Destrosa CW	F0/F1/ F2/F3	T0	B1	-	-	-
		22	S Sinistrosa CCW	F4/F5	T1	B2	C	V	
		26		F6	C2	A0	R	H	
		29		F7	C3			T	
		33		E0/E1/ E2/E3	S0			N	
		36		L0/L1/ L2/L3	S1				
		42		R0/R1/ R2/R3					
		46		U0/U1/ U2					
		50							
		55							
		63							
		71							

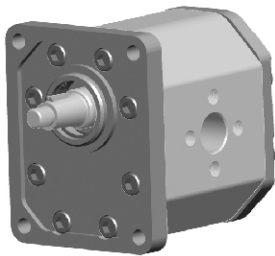
Posizione bocche - Port position

- Aspirazione laterale - Mandata laterale / *side Inlet - side Outlet*
- C Aspirazione posteriore - Mandata laterale / *back Inlet - side Outlet*
- R Aspirazione e Mandata posteriore / *back Inlet - back Outlet*

Guarnizioni - Seals

- Buna (-10°C + 80°C) - Max pressione in Aspirazione 3 bar assoluti / *Inlet pressure up to 3 bar absolute*
- V Viton (-10°C + 120°C) - Max pressione in Aspirazione 3 bar assoluti / *Inlet pressure up to 3 bar absolute*
- H Silicon (-40°C + 80°C) - Max pressione in Aspirazione 3 bar assoluti / *Inlet pressure up to 3 bar absolute*
- T Buna (-10°C + 80°C) - Max pressione in Aspirazione 6 bar assoluti / *Inlet pressure up to 6 bar absolute*
- N Buna (-10°C + 80°C) - Max pressione in Aspirazione 10 bar assoluti / *Inlet pressure up to 10 bar absolute*

3VP..D - E. T0 B1



Profondità 18mm filetto M10

M10 thread depth 18

Assemblaggio con 8 tiranti da M10 coppia di serraggio 47±3 Nm

To mount the pump n.8 x M10 screws, with a torque wrench settings fixed at 47±3 Nm

Filetto M14 x 1.5 su albero con coppia di serraggio 80 Nm

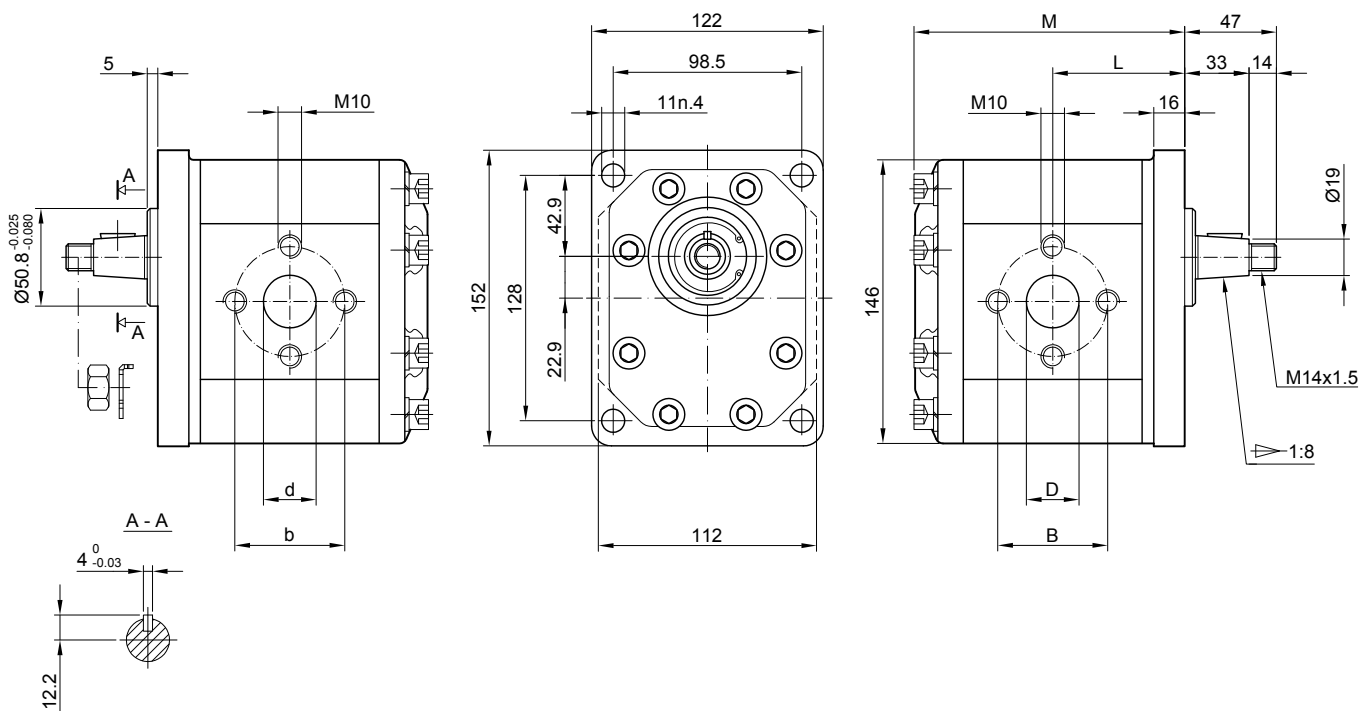
Shaft M14 x 1.5 nut, with a torque wrench settings fixed at 80 Nm

Flangia anteriore e coperchio posteriore in ghisa

Cast iron front flange and back cover

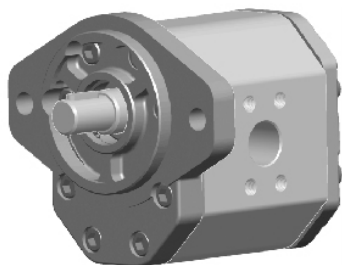
MANDATA
OUTLET

ASPIRAZIONE
INLET



Tipo Type	Cilindrata Displacement (cm ³ /rev)	Pressione massima Max pressure			Velocità Massima Max. speed (r/min)	Velocità minima Min. speed (r/min)	Dimensioni Dimensions					
		P1 bar	P2 bar	P3 bar			M mm	L mm	B mm	D mm	b mm	d mm
3VP 20 D	20	250	265	280	3500	600	128	63	56	27	56	19
3VP 22 D	22	250	265	280	3500	600	130	64	56	27	56	19
3VP 26 D	26	250	265	280	3000	600	133	65	56	27	56	19
3VP 29 D	29	250	265	280	3000	600	135	66	56	27	56	19
3VP 33 D	33	230	250	270	3000	500	139	68	56	27	56	19
3VP 36 D	36	230	250	270	3000	500	142	70	56	27	56	19
3VP 42 D	42	230	250	270	3000	500	149	73	51	27	51	27
3VP 46 D	46	230	250	270	3000	500	152	75	51	27	51	27
3VP 50 D	50	220	240	260	3000	500	156	77	56	27	56	27
3VP 55 D	55	200	230	250	2800	400	160	79	62	33	51	27
3VP 63 D	63	200	230	250	2800	400	168	83	62	33	51	27
3VP 71 D	71	180	200	220	2500	400	175	86	62	33	51	27

3VP..D - F. C2 A0



Profondità 19 filetto 3/8-16 UNC
Profondità 19 filetto 7/16-14 UNC

3/8-16 UNC thread depth 19
7/16-14 UNC thread depth 19

Assemblaggio con 8 tiranti da M10 coppia di serraggio 47±3 Nm

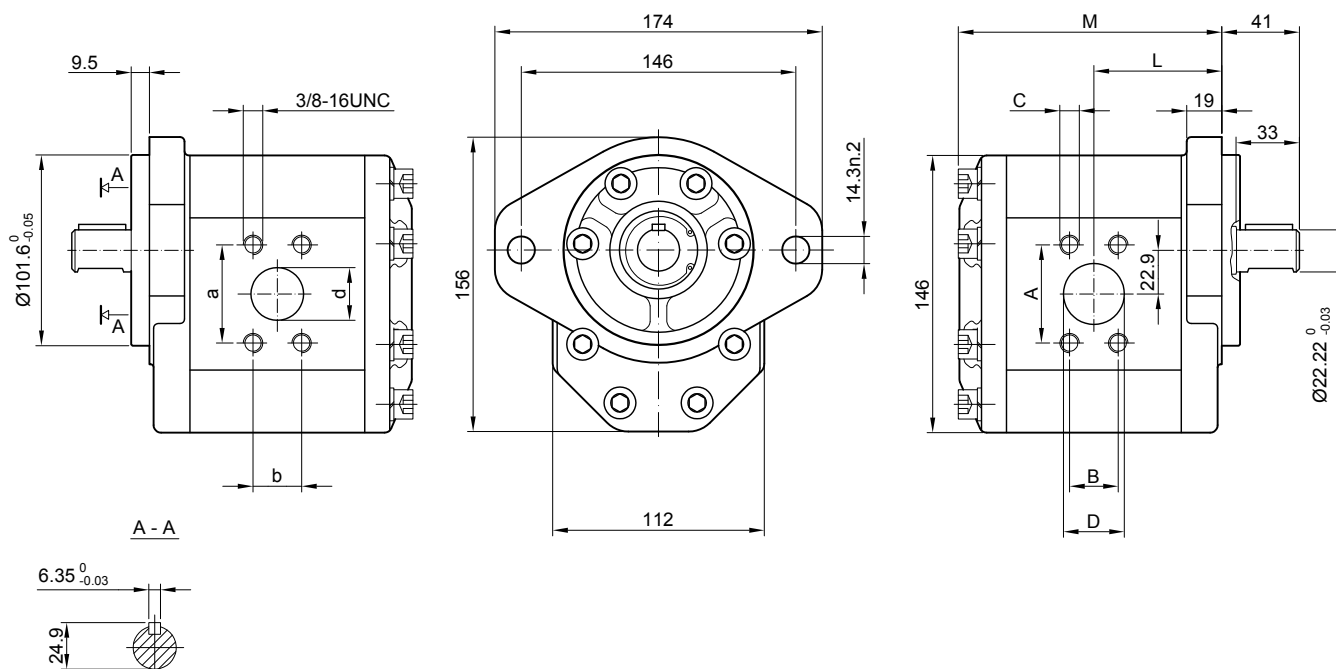
To mount the pump n.8 M10 screws, with a torque wrench settings fixed at 47±3 Nm

Flangia anteriore e coperchio posteriore in ghisa

Cast iron front flange and back cover

MANDATA
OUTLET

ASPIRAZIONE
INLET

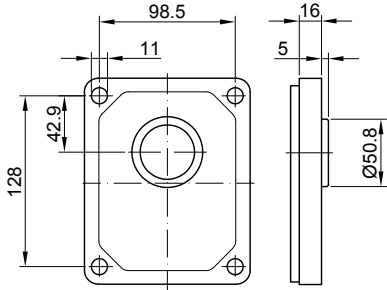


Tipo Type	Cilindrata Displacemen (cm ³ /rev)	Pressione massima Max pressure			Velocità Massima Max. speed (r/min)	Velocità minima Min. speed (r/min)	Dimensioni Dimensions								
		P1 bar	P2 bar	P3 bar			M mm	L mm	A mm	B mm	C UNC	D mm	a mm	b mm	d mm
3VP 20 D	20	250	265	280	3500	600	128	63	52.4	26.2	3/8	27	47.6	22.2	19
3VP 22 D	22	250	265	280	3500	600	130	64	52.4	26.2	3/8	27	47.6	22.2	19
3VP 26 D	26	250	265	280	3000	600	133	65	52.4	26.2	3/8	27	47.6	22.2	19
3VP 29 D	29	250	265	280	3000	600	135	66	52.4	26.2	3/8	27	47.6	22.2	19
3VP 33 D	33	230	250	270	3000	500	139	68	52.4	26.2	3/8	27	47.6	22.2	19
3VP 36 D	36	230	250	270	3000	500	142	70	52.4	26.2	3/8	27	47.6	22.2	19
3VP 42 D	42	230	250	270	3000	500	149	73	52.4	26.2	3/8	27	47.6	22.2	19
3VP 46 D	46	230	250	270	3000	500	152	75	52.4	26.2	3/8	27	47.6	22.2	19
3VP 50 D	50	220	240	260	3000	500	156	77	52.4	26.2	3/8	27	47.6	22.2	19
3VP 55 D	55	200	230	250	2800	400	160	79	58.7	30.2	7/16	33	52.4	26.2	27
3VP 63 D	63	200	230	250	2800	400	168	83	58.7	30.2	7/16	33	52.4	26.2	27
3VP 71 D	71	180	200	220	2500	400	175	86	58.7	30.2	7/16	33	52.4	26.2	27

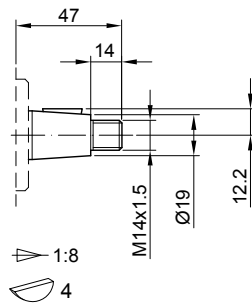
SERIE 3VP - 3VP SERIES

FLANGE / FRONT COVERS

ALBERI / SHAFTS

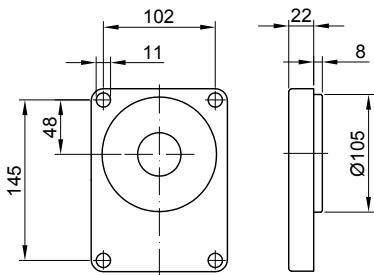


B1

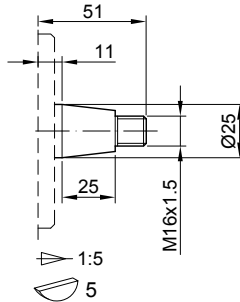


T0

Coppia max 300 Nm
Max. torque 300 Nm

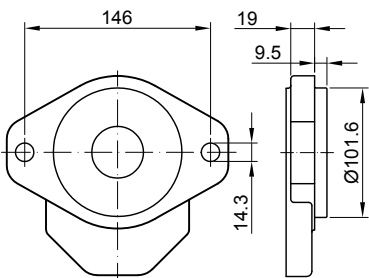


B2

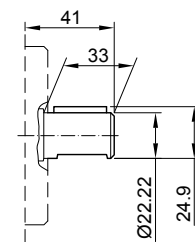


T1

Coppia max 350 Nm
Max. torque 350 Nm

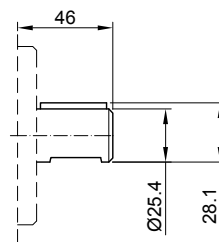


A0



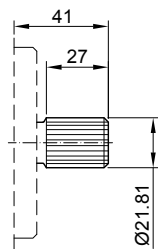
C2

Coppia max 400 Nm
Max. torque 400 Nm



C3

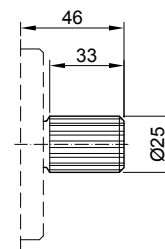
Coppia max 450 Nm
Max. torque 450 Nm



DP16/32-30° - 13T

S0

Coppia max 500 Nm
Max. torque 500 Nm



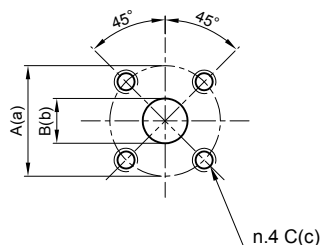
DP16/32-30° - 15T

S1

Coppia max 600 Nm
Max. torque 600 Nm

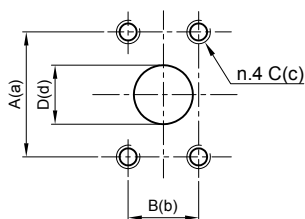
SERIE 3VP - 3VP SERIES

BOCCHE / PORTS



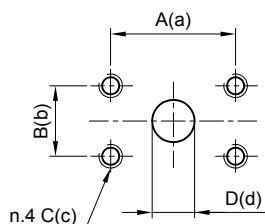
F0/F1/F2/F3

Tipo Type	Codice bocca Ports code	Aspirazione Inlet			Mandata Outlet		
		A	B	C	a	b	c
3VP 20 ÷ 29	F0	50	20	M8	50	20	M8
3VP 33 ÷ 46	F1	65	25	M8	65	20	M8
3VP 50 ÷ 71	F2	76	33	M10	76	25	M10
3VP 50 ÷ 63	F3	76	33	M8	76	25	M8



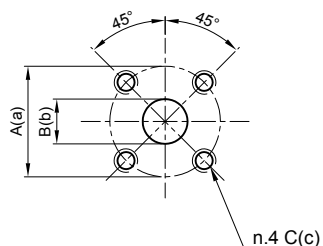
F4/F5

Tipo Type	Codice bocca Ports code	Aspirazione Inlet				Mandata Outlet			
		A	B	C	D	a	b	c	d
3VP 20 ÷ 50	F4	52.4	26.2	3/8 - 16UNC	27	47.6	22.2	3/8 - 16UNC	19
3VP 55 ÷ 71	F5	58.7	30.2	7/16 - 14UNC	33	52.4	26.2	3/8 - 16UNC	27



F6

Tipo Type	Aspirazione Inlet				Mandata Outlet			
	A	B	C	D	a	b	c	d
3VP 20 ÷ 29	57.2	26	M10	25	52.7	26	M10	20
3VP 33 ÷ 36	57.2	26	M10	30	52.7	26	M10	20
3VP 42 ÷ 46	57.2	26	M10	35	52.7	26	M10	20
3VP 50 ÷ 63	57.2	26	M10	35	52.7	26	M10	25

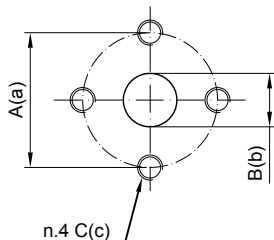


F7

Tipo Type	Aspirazione Inlet			Mandata Outlet		
	A	B	C	a	b	c
3VP 20 ÷ 71	55	27	M8	55	19	M8

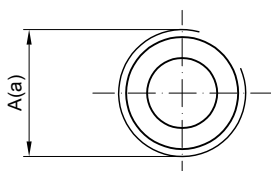
SERIE 3VP - 3VP SERIES

BOCCHE / PORTS



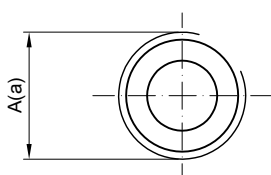
E0/E1/E2/E3

Tipo Type	Codice bocca Ports code	Aspirazione Inlet			Mandata Outlet		
		A	B	C	a	b	c
3VP 20 ÷ 36	E0	56	27	M10	56	19	M10
3VP 42 ÷ 46	E1	51	27	M10	51	27	M10
3VP 50	E2	56	27	M10	56	27	M10
3VP 55 ÷ 71	E3	62	33	M10	51	27	M10



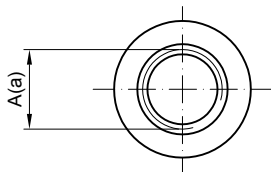
L0/L1/L2/L3

Tipo Type	Codice bocca Ports code	Aspirazione Inlet		Mandata Outlet
		A	a	
3VP 20 ÷ 22	L0	G 3/4		G 3/4
3VP 26 ÷ 42	L1	G 1		G 3/4
3VP 46 ÷ 63	L2	G 1 1/4		G 1
3VP 71	L3	G 1 1/2		G 1 1/4



R0/R1/R2/R3

Tipo Type	Codice bocca Ports code	Aspirazione Inlet		Mandata Outlet
		A	a	
3VP 20 ÷ 22	R0	PT 3/4		PT 3/4
3VP 26 ÷ 42	R1	PT 1		PT 3/4
3VP 46 ÷ 63	R2	PT 1 1/4		PT 1
3VP 71	R3	PT 1 1/2		PT 1 1/4

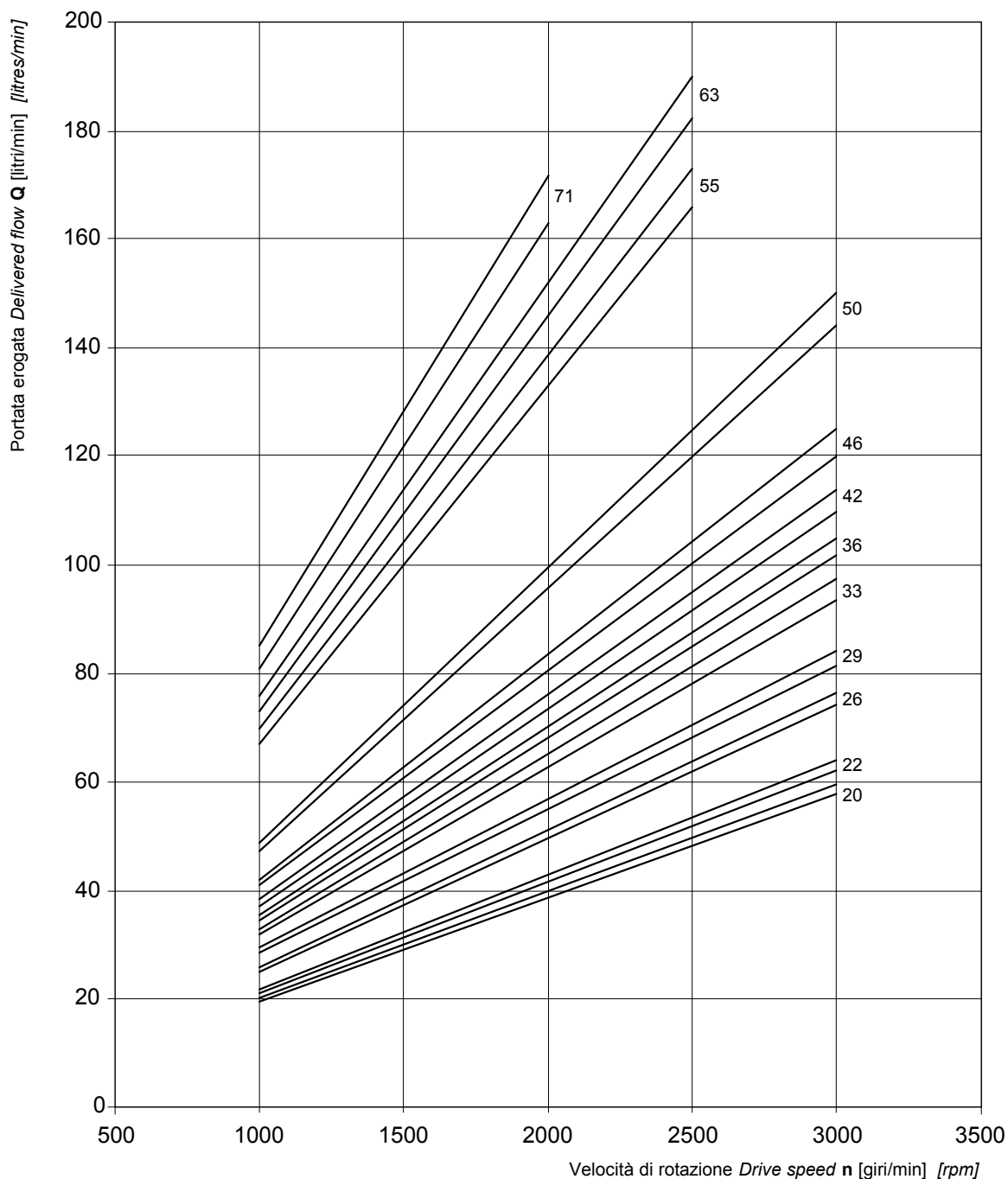


U0/U1/U2

Tipo Type	Codice bocca Ports code	Aspirazione Inlet		Mandata Outlet
		A	a	
3VP 20 ÷ 36	U0	1 5/16 - 12UNF		1 1/16 - 12UNF
3VP 42 ÷ 50	U1	1 5/8 - 12UNF		1 1/16 - 12UNF
3VP 55 ÷ 71	U2	1 7/8 - 12UNF		1 5/16 - 12UNF

SERIE 3VP - 3VP SERIES

3VP CURVE CARATTERISTICHE / 3VP PERFORMANCE CURVES



Le curve sono state ottenute alla temperatura di 50°C, utilizzando olio con viscosità 30 cSt alle pressioni sotto riportate.

Each curve has been obtained at 50°C, using oil with viscosity 30 cSt at these pressure.

20 ÷ 29 | 25-250 bar

50 | 25-220 bar

55 | 25-180 bar

33 ÷ 42 | 25-240 bar

63 | 25-170 bar

71 | 25-150 bar

SERIE 3VP - 3VP SERIES

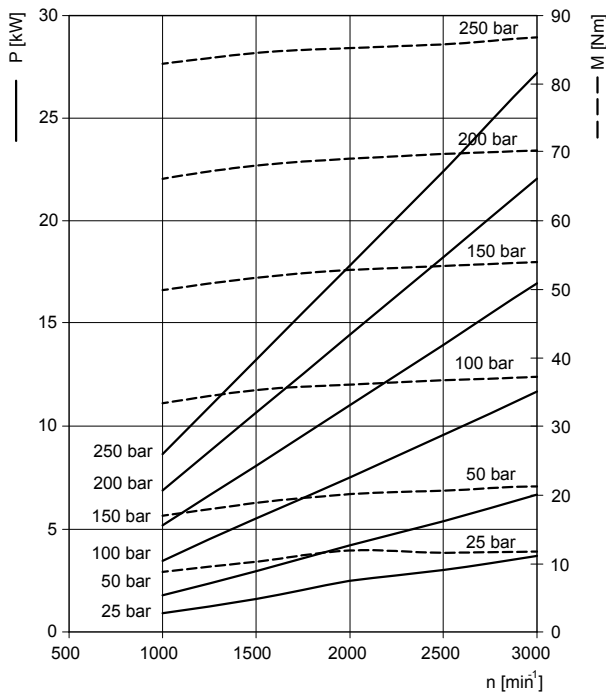
CURVE CARATTERISTICHE / PERFORMANCE CURVES

Potenza assorbita - Absorbed power **P** [kW]

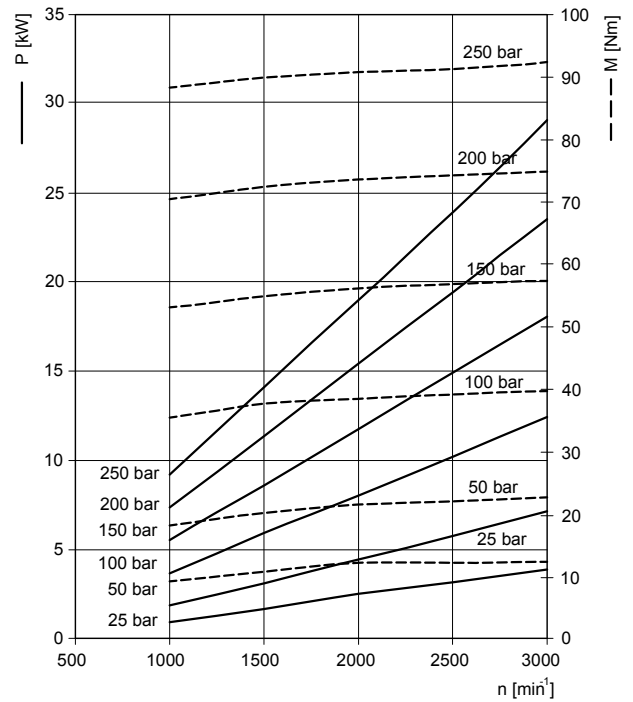
Momento torcente assorbito - Absorbed torque **M** [Nm]

Velocità di rotazione - Drive speed **n** [giri/min] [rpm]

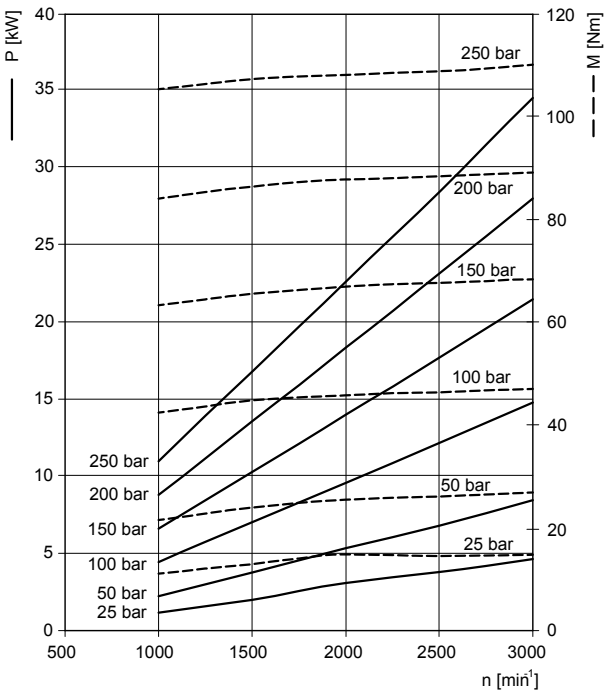
3VP 20



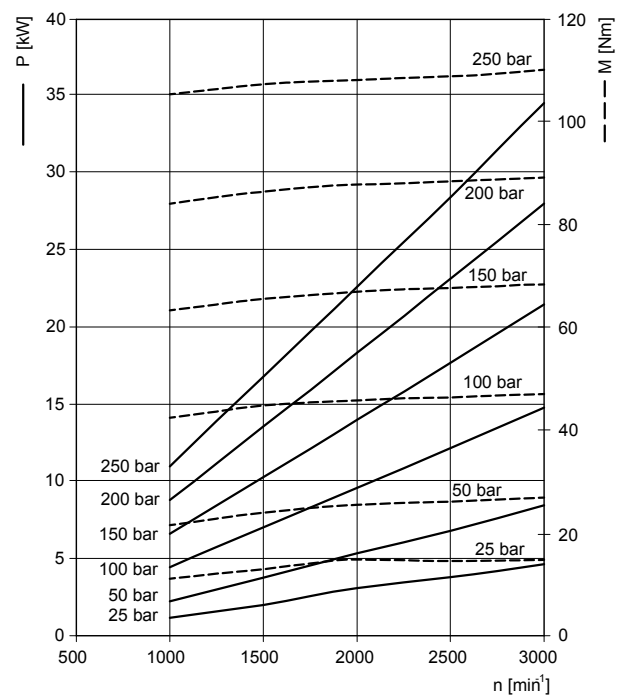
3VP 22



3VP 26



3VP 29



SERIE 3VP - 3VP SERIES

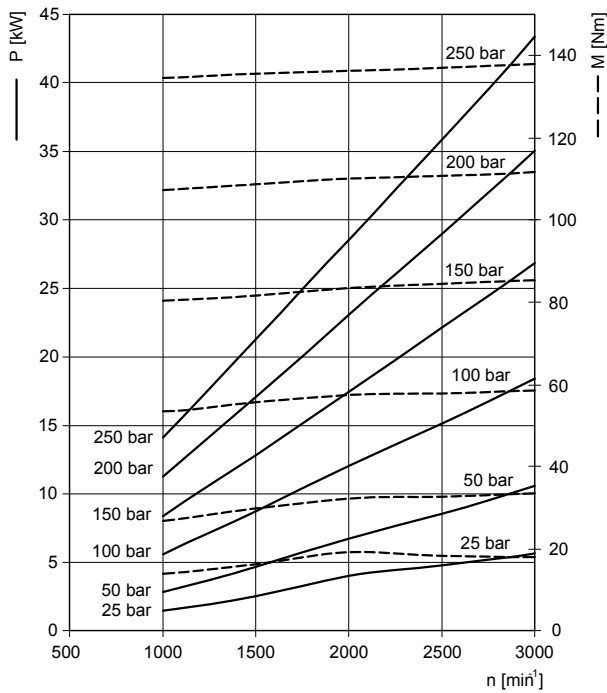
CURVE CARATTERISTICHE / PERFORMANCE CURVES

Potenza assorbita - Absorbed power P [kW]

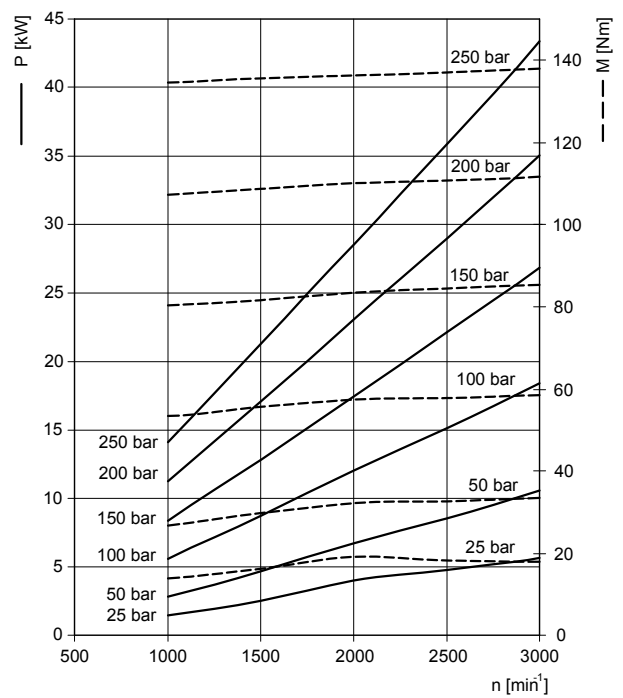
Momento torcente assorbito - Absorbed torque M [Nm]

Velocità di rotazione - Drive speed n [giri/min] [rpm]

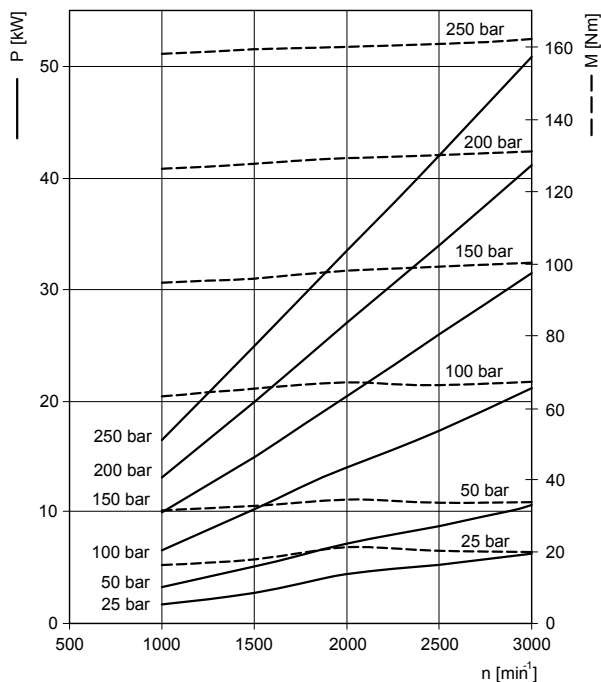
3VP 33



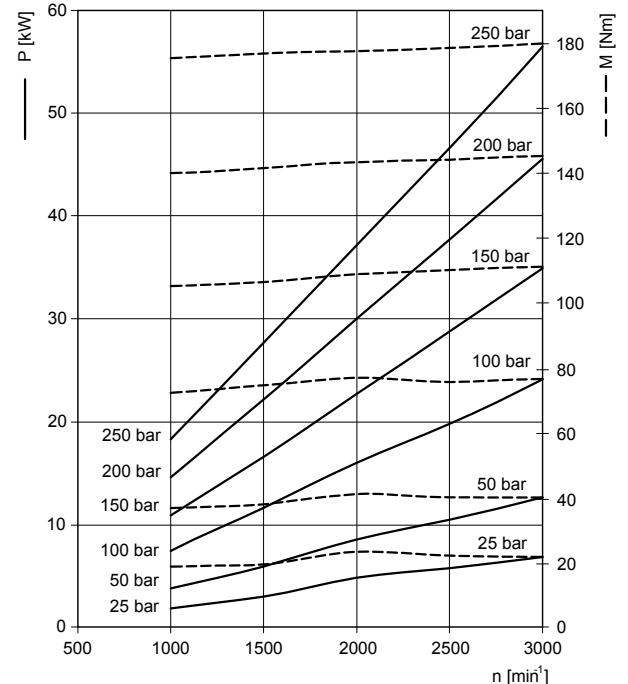
3VP 36



3VP 42



3VP 46



SERIE 3VP - 3VP SERIES

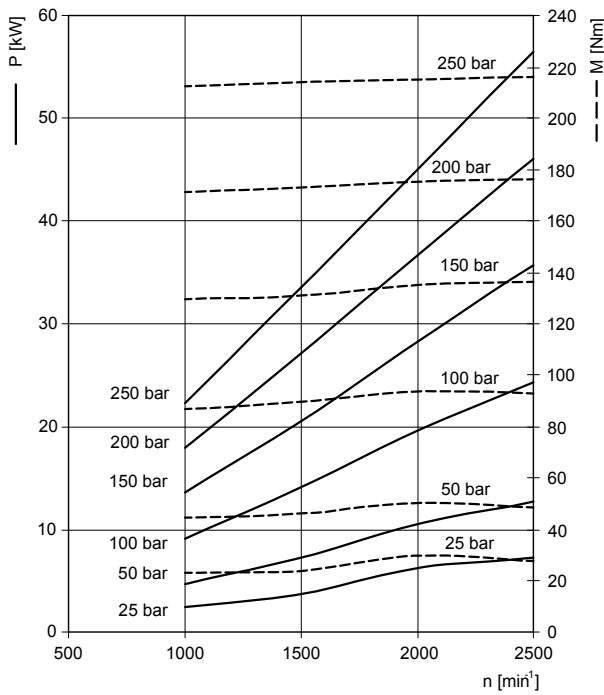
CURVE CARATTERISTICHE / PERFORMANCE CURVES

Potenza assorbita - Absorbed power **P** [kW]

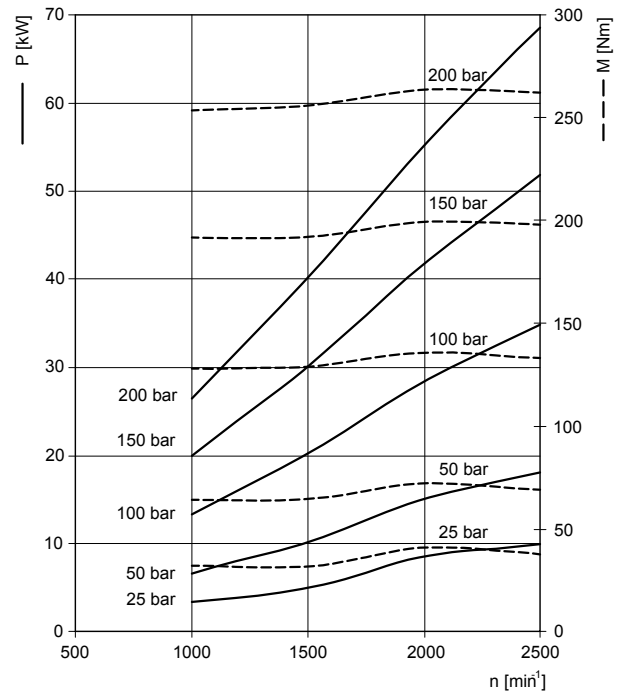
Momento torcente assorbito - Absorbed torque **M** [Nm]

Velocità di rotazione - Drive speed **n** [giri/min] [rpm]

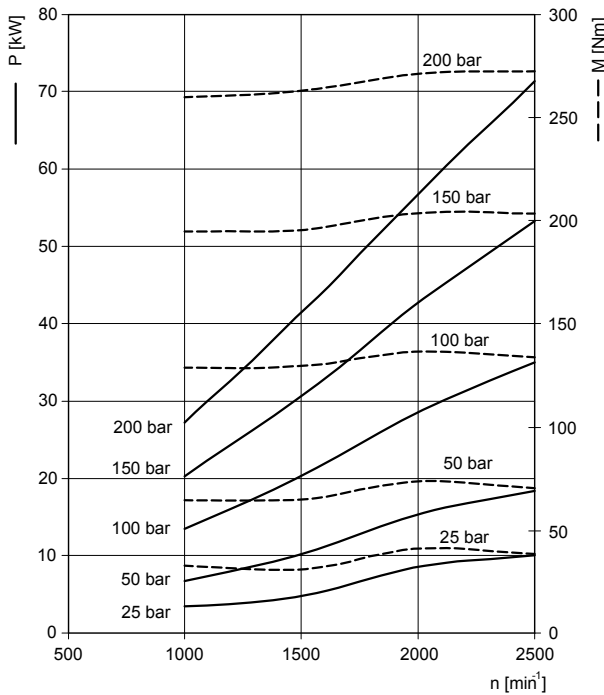
3VP 50



3VP 55



3VP 63



3VP 71

