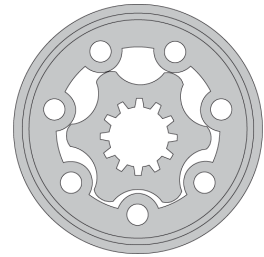
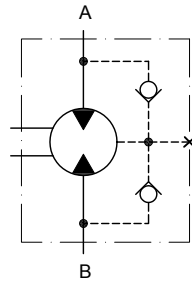


# LOW SPEED HIGH TORQUE MOTORS OZ

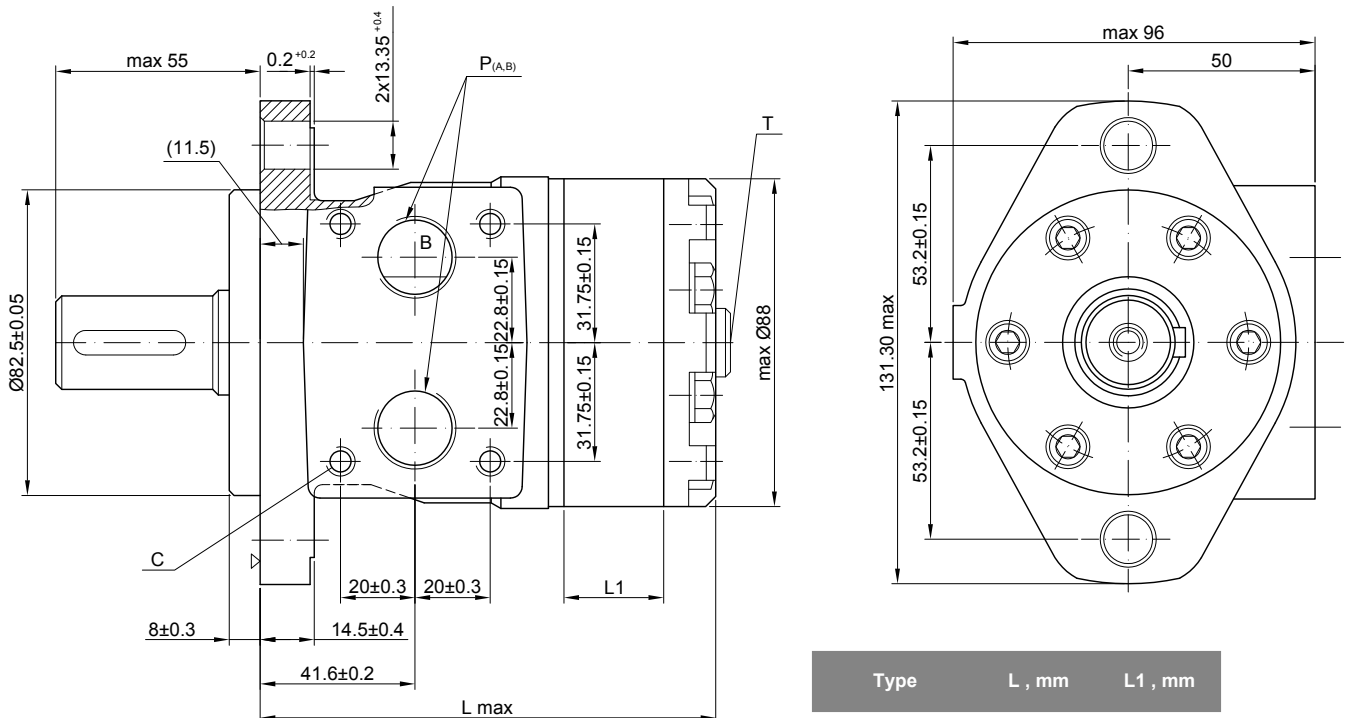


## SPECIFICATION DATA

Code	Displacement [cm <sup>3</sup> /rev.]	Max. Speed [RPM]	Max. Torque [daNm]		Max. Output [kW]		Max. Pressure Drop [bar]		Max. Oil Flow [l/min]
<b>OZ 32</b>	32	1050	4,6	5,9	3,2	5,5	105	140	40
<b>OZ 40</b>	40	970	5,6	7,4	4,2	6,9	105	140	40
<b>OZ 50</b>	49,5	808	7	9,2	5,2	8,6	105	140	40
<b>OZ 80</b>	79,2	505	10,8	14,6	5,2	8,6	105	140	40
<b>OZ 100</b>	99	404	14,4	18,3	5,2	8,6	105	140	40
<b>OZ 125</b>	123,8	232	17	22,9	5,2	8,6	105	140	40
<b>OZ 160</b>	158,4	252	22	29,3	5,2	8,6	105	140	40
<b>OZ 200</b>	198	202	27,5	36,6	5,2	8,6	105	140	40
<b>OZ 250</b>	247,5	160	30,1	37,6	4,6	7	90	115	40
<b>OZ 315</b>	316,8	126	31,7	44	3,4	5,8	70	105	40
<b>OZ 400</b>	369	100	40,8	55,6	3,4	5,8	70	105	40

Intermittent operation: the permissible values may occur for max. 10% of every minute.

## OUTLINE DIMENSIONS REFERENCE



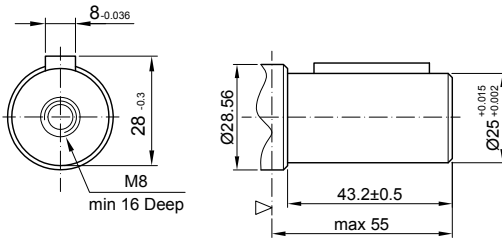
- C :2 x M8 - 13 mm depth
- P<sub>(A,B)</sub> :2 x G1/2 - 15 mm depth
- T :G1/4 -12 mm depth (plugged)

**Standard Rotation**  
Viewed from Shaft End  
Port **A** Pressurized - **CW**  
Port **B** Pressurized - **CCW**

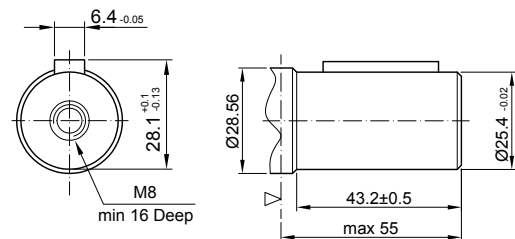
Type	L , mm	L1 , mm
<b>OZ 32</b>	101	7
<b>OZ 40</b>	101	7
<b>OZ 50</b>	101	7
<b>OZ 80</b>	104,5	10,5
<b>OZ 100</b>	107	13
<b>OZ 125</b>	110	16
<b>OZ 160</b>	115	21
<b>OZ 200</b>	120	26
<b>OZ 250</b>	126	32
<b>OZ 315</b>	136	42
<b>OZ 400</b>	146	52

## SHAFT EXTENSIONS

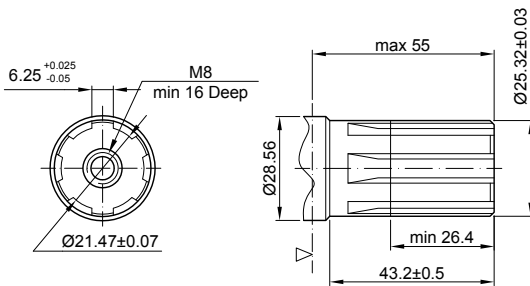
**C** Ø25 straight, Parallel key A8x7x32 DIN 6885  
Max. Torque 44 daNm



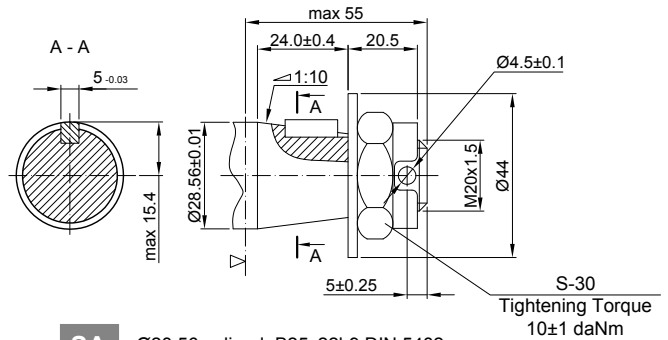
**CO** Ø25,4 straight, Parallel key 1/4"x1/4"x1 1/4" BS46  
Max. Torque 44 daNm



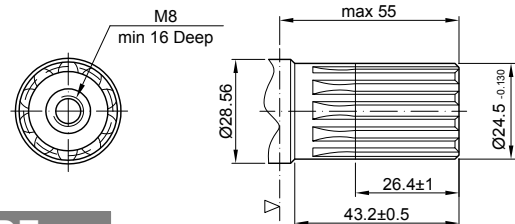
**SH** Ø28,56 splined, BS 2059 (SAE 6B)  
Max. Torque 44 daNm



**K** Ø28,56 tapered 1:10, Parallel key B5x5x14 DIN 6885  
Max. Torque 44 daNm



**SA** Ø28,56 splined, B25x22h9 DIN 5482  
Max. Torque 44 daNm



▽ Motor Mounting Surface

## ORDER CODE

	1	2	3	4	5	6	7
<b>OZ</b>							

<b>1</b>	<b>Displacement code</b>
<b>50</b>	49,5 [cm³/rev]
<b>80</b>	79,2 [cm³/rev]
<b>100</b>	99,0 [cm³/rev]
<b>125</b>	123,8 [cm³/rev]
<b>160</b>	158,4 [cm³/rev]
<b>200</b>	198,0 [cm³/rev]
<b>250</b>	247,5 [cm³/rev]
<b>315</b>	316,8 [cm³/rev]
<b>400</b>	398,0 [cm³/rev]
<b>2</b>	<b>Shaft Extensions</b>
<b>C</b>	Ø25 straight, Parallel key A8x7x32 DIN6885
<b>CO</b>	Ø25,4 straight, Parallel key 1/4"x1/4"x1 1/4" BS46
<b>SH</b>	Ø28,56 splined BS 2059 (SAE 6B)
<b>K</b>	Ø28,56 tapered 1:10, Parallel key B5x5x14 DIN6885
<b>SA</b>	Ø28,56 splined B25x22h9 DIN 5482

<b>3</b>	<b>Ports</b>
<b>omit</b>	BSP (ISO 228)
<b>M</b>	Metric (ISO 262)
<b>4</b>	<b>Rotation</b>
<b>omit</b>	Standard Rotation
<b>R</b>	Reverse Rotation
<b>5</b>	<b>Option (Paint)</b>
<b>omit</b>	no paint
<b>P</b>	Painted Low Gloss Color
<b>PC</b>	Corrosion Protected Paint
<b>6</b>	<b>Special Features</b>
<b>omit</b>	none
<b>FR</b>	Free Running
<b>7</b>	<b>Design Series</b>
<b>omit</b>	Factory specified

The permissible output torque for shafts must be not exceeded!  
Color at customer's request.