

CETOP-03 SIZE, PILOT-OPERATED OPENING, MODULAR CHECK VALVE



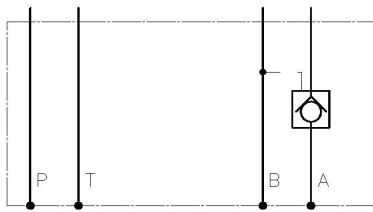
Characteristics

TYPE	SPRING	MAX PRESSURE	WEIGHT
IRME-03/*	1,5 ÷ 3 bar	350 bar	1,1 Kg.

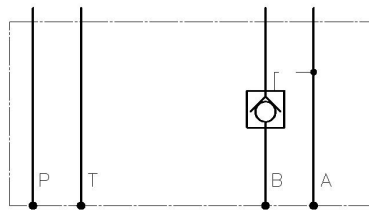
Description Cetop-03 size modular check valve on A,B or AB ports.

Symbol

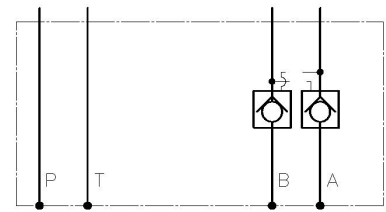
Type IRME-03/A



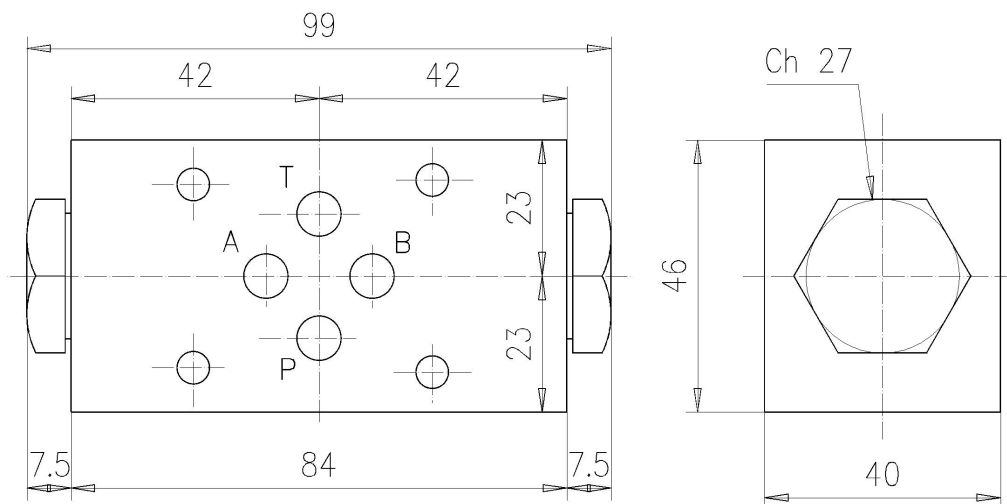
Type IRME-03/B



Type IRME-03/AB



Dimensions



Installation rules

- The valves type IRME can be mounted in any position
- Fluid to be used: hydraulic oil in compliance with DIN 51524 rules, viscosity between 30 and 100 mm²/s (cSt) at 40°C
- Recommended filtration of 25µ
- Hydraulic fluid temperature: from -20° to +75°C

Ordering code

IRME-03 / *

A=check on A port B=check on B port AB=check on AB ports
 CETOP 03 size modular check valve