

CETOP-05 SIZE MODULAR CHECK VALVE



Characteristics

TYPE	FLOW	PRESSURE	WEIGHT
IRM-05/*	45 l/min.	350 bar	2.10 Kg.

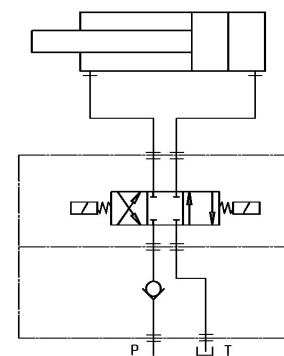
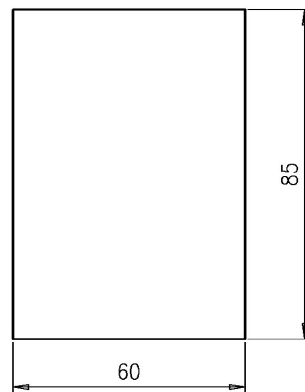
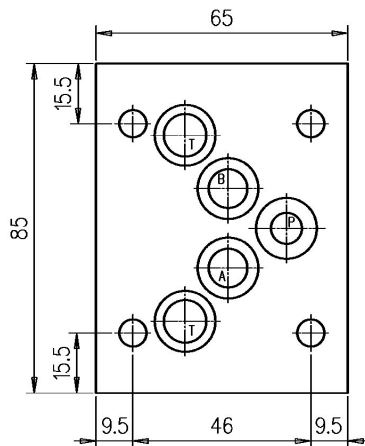
Description

Cetop-05 size modular mounting check valve on P or T ports.

Dimensions

Type IRM-05/P N°5 OR-2050

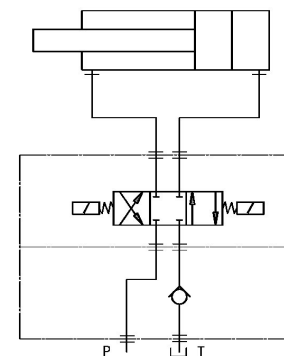
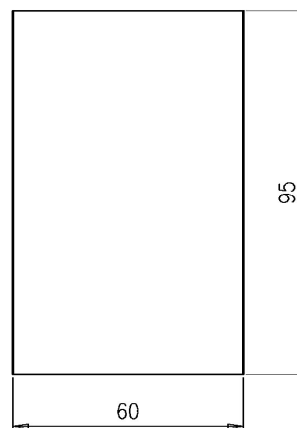
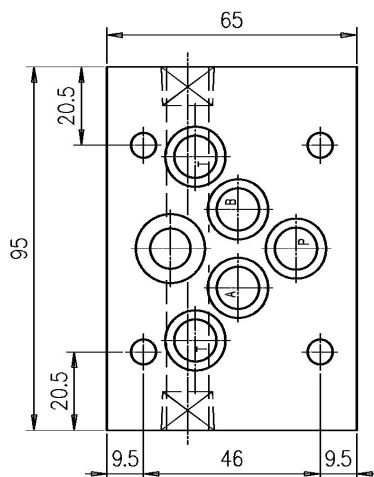
Symbol



Dimensions

Type IRM-05/T N°5 OR-2050

Symbol



Installation rules

- The valves type IRM can be mounted in any position
- Fluid to be used: hydraulic oil in compliance with DIN 51524 rules, viscosity between 30 and 100 mm²/s (cSt) at 40°C
- Recommended filtration of 25μ
- Hydraulic fluid temperature: from -20° to +75°C

Ordering code

IRM-05 / *

P=check on P port T=check on T port

CETOP- 05 size modular check valve