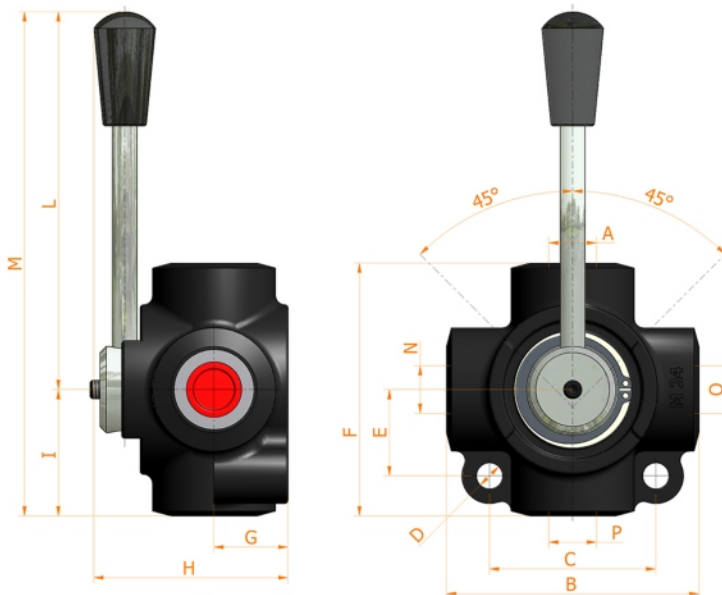
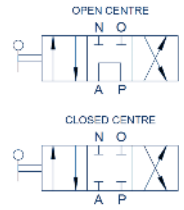




# D4 SAE

4 ways flow inverter



**Specifications:**

- Iron cast body
- White zinc plated external parts
- Standard colour black

O-N-A SAE	FLOW liters/min	PRESSURE BAR	B mm	C mm	D mm	E mm	F mm	G mm	H mm	L mm	M mm	MASS KG	CODE OF OPEN CENTRE	CODE OF CLOSED CENTRE
3/4 - 16	60	350	80	54	8,5	28	80	24	63	115	155	1,200	7001.0200	7001.0207
7/8 - 14	90	350	80	54	8,5	28	80	24	63	115	155	1,100	7001.0201	7001.0208
1 1/16 - 12	120	350	94	74	10,5	38	94	31	77	115	162	2,200	7001.0202	7001.0209
1 5/16 - 12	200	300	94	74	10,5	38	94	31	77	115	162	2,000	7001.0203	7001.0210

**HV Hydraulic S.r.l.**

www.hvhydraulic.com - info@hvhydraulic.com  
 Via dell'Agricoltura, 162 - Loc. Castelletto di Serravalle - 40053 Valsamoggia (BO) Italy - Tel. +39 051 670.50.11 - Fax +39 051 670.53.74  
 © ALL RIGHTS RESERVED