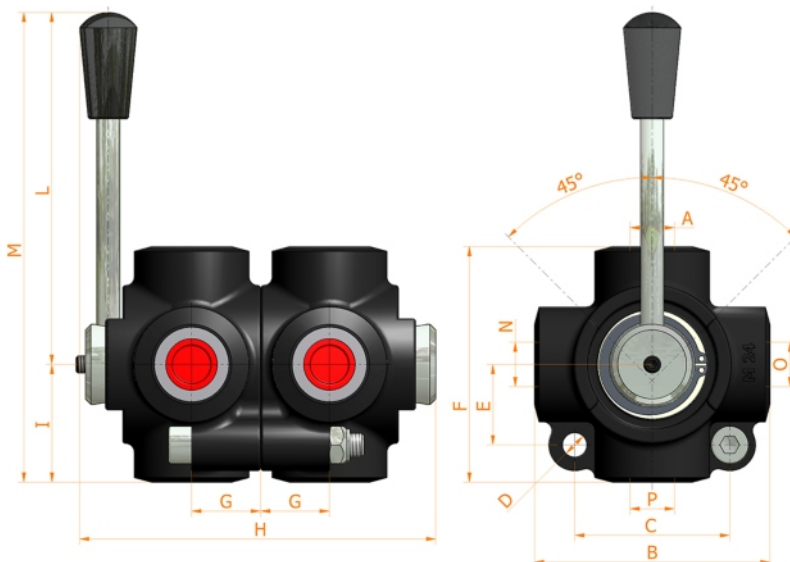
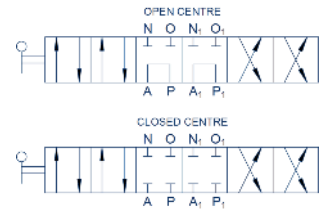


hydraulic diagram

D8

8 ways flow inverter



Specifications:

- Iron cast body
- White zinc plated external parts
- Standard colour black

O-N-A GAS	FLOW liters/min	PRESSURE BAR	B mm	C mm	D mm	E mm	F mm	G mm	H mm	L mm	M mm	MASS KG	CODE OF OPEN CENTRE	CODE OF CLOSED CENTRE
1/4"	60+60	350	80	54	8,5	20	80	24	124	115	155	2,300	7005.0104	7005.0111
3/8"	60+60	350	80	54	8,5	28	80	24	124	115	155	2,300	7005.0100	7005.0107
1/2"	60+90	350	80	54	8,5	28	80	24	124	115	155	2,100	7005.0101	7005.0108
3/4"	120+120	350	94	74	10,5	38	94	31	152	115	162	4,300	7005.0102	7005.0109
1"	200+200	300	94	74	10,5	38	94	31	152	115	162	4,000	7005.0103	7005.0110

HV Hydraulic S.r.l.

www.hvhydraulic.com - info@hvhydraulic.com

Via dell'Agricoltura, 162 - Loc. Castelletto di Serravalle - 40053 Valsamoggia (BO) Italy - Tel. +39 051 670.50.11 - Fax +39 051 670.53.74

© ALL RIGHTS RESERVED