

# CARTRIDGE PRESSURE RELIEF VALVE



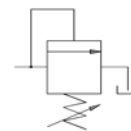
## Characteristics

| TYPE        | MAX. FLOW  | PRESSURE    | LOCKING TORQUE | WEIGHT   |
|-------------|------------|-------------|----------------|----------|
| CART. VM-03 | 30 l./min. | 5 ÷ 350 bar | 46 – 51 Nm     | Kg. 0.17 |

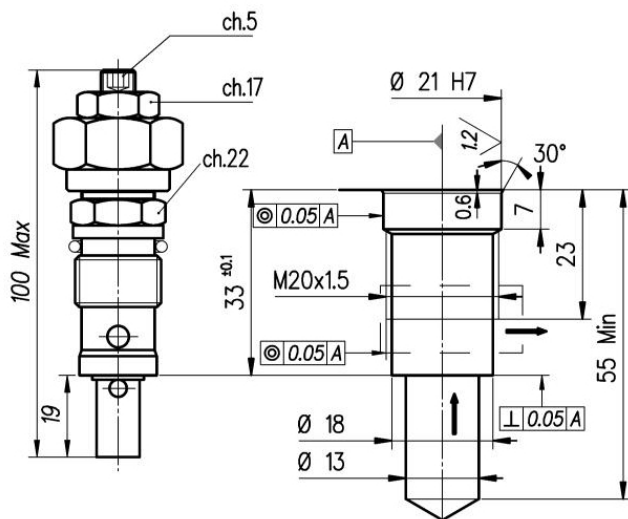
## Description

Direct acting cartridge pressure relief valve. The pressure setting is achieved by loosening the locking nut and rotating the cartridge screw (clockwise it increases). The cartridge shape and small overall dimensions make it particularly suitable to be mounted on sub-plates and blocks.

## Symbol

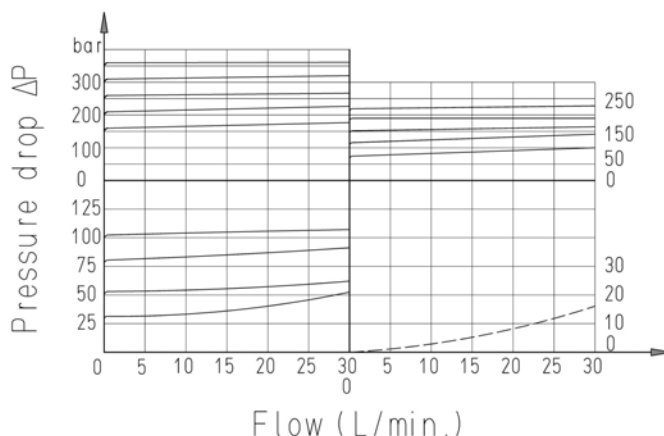


## Dimensions



| TYPE | SPRINGS                      |                              |                                    |
|------|------------------------------|------------------------------|------------------------------------|
|      | Min-max bar pressure setting | Pressure increase turn/screw | Standard Setting bar (Q=5 l./min.) |
| /50  | 5 ÷ 50                       | 12                           | 50                                 |
| /100 | 30 ÷ 100                     | 23.5                         | 100                                |
| /210 | 50 ÷ 210                     | 47                           | 210                                |
| /350 | 100 ÷ 350                    | 82                           | 350                                |

## Diagram



## Installation rules

- The valves type VM can be mounted in any position
- Fluid to be used: hydraulic oil in compliance with DIN 51524 rules, viscosity between 30 and 100 mm<sup>2</sup>/s (cSt) at 40°C
- Recommended filtration: 25μ
- Hydraulic fluid temperature: from -20° to +75°C

## Ordering code

CART.V M-03 / \*\*\*

Pressure setting : 50=5-50 bar 100=30-100 bar 210=50-210 bar 350=100-350 bar

Cartridge pressure relief valve