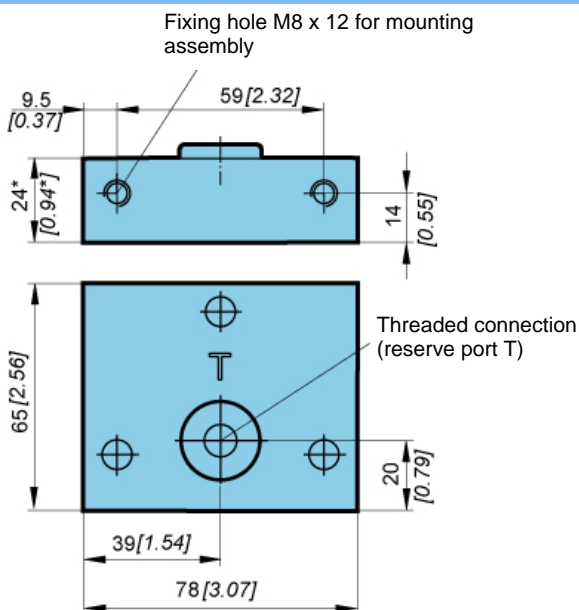




# END PLATE ZB-KVM-6

## Dimensions



ZB-KVM-6

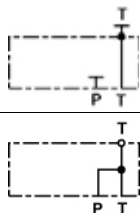
\* ZB-KVM-6-PT-1/2(M22) = 27

Mass = 0,8 kg

## Model code

Z B - K V M - 6 - [ ] - [ ] - [ ] - \*

### Symbol



No designation

PT

((It is necessary to use this end plate by series connections KVM-S))

### Threaded connections

M18 x 1,5 (ISO 9974)	No designation
M22 x 1,5 (ISO 9974)	M22
G1/2 (ISO 1179)	1/2
G3/8 (ISO 1179)	3/8
3/4-16 UNF-2B	3/4-16UNF

### Seal type

NBR seals for mineral oil HL, HLP to DIN 51524	No designation
FPM seals for HETG, HEES, HEPG to VDMA 24568 and ISO 15380	E

Special requirements to be briefly specified

Mechanically operated

Hydraulically operated

Electrically operated