

SUBPLATES

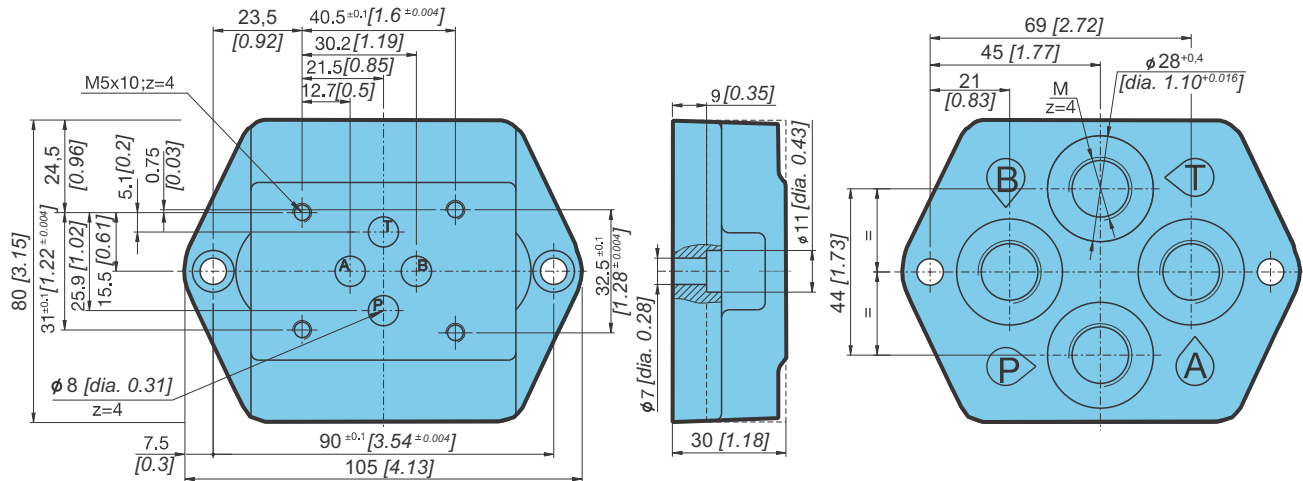
- NG 6, 10, 16
- Up to 350 bar [5076 PSI]
- Up to 300 L/min [31,7 GPM]
- Connecting dimensions to ISO 4401.
- Threaded connection to ISO 1179 (BSPP/Gas).



PP-KV-6, PP-KV-10, PP-KV-16

Dimensions

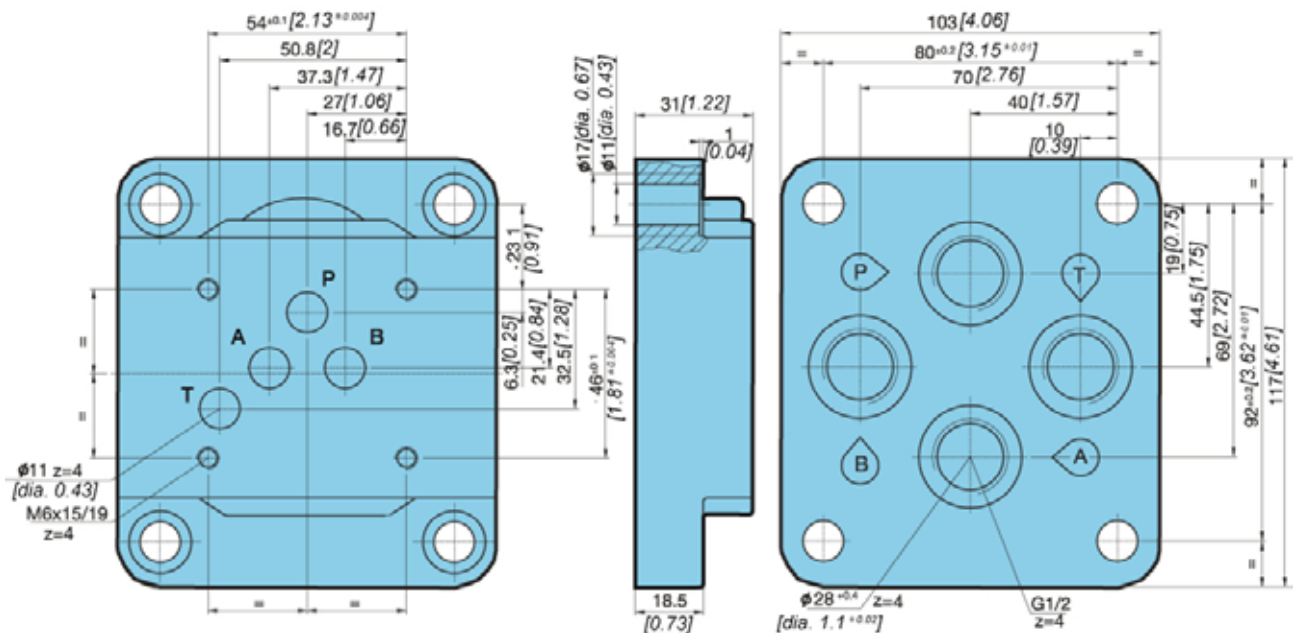
Subplate, type PP-KV-6-...

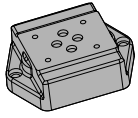


Type	PP-KV-6-2-G3/8-Ø28-L mm [Zoll]	PP-KV-6-2-G3/8-Ø28-L-ZN mm [Zoll]	PP-KV-6-2-G1/2-Ø28-L mm [Zoll]
M	G3/8	G3/8	G1/2
Surface protection	Phosphated	Zinc - plated	Phosphated

Subplate type PP-KV-10-G1/2-Ø28L

Surface protection - Phosphated





Dimensions

Subplate, type PP-KV-16-G1-Ø41

