

SERIE 2.5VP - 2.5VP SERIES

COME ORDINARE - HOW TO ORDER

2.5V	P	Cilindrata Size	Rotazione Rotation	Bocche Ports	Albero Shaft	Flangia Flange	Pos. bocche Port position	Guarnizioni Seals	Opzioni Options
Serie Series	Pompa pump	10	D Destrosa CW	F0/F1	C2	A1	-	-	-
		12.5	S Sinistrosa CCW	F2	S0	A2	C	V	
		14		Z0/Z1/Z2	S1		R	H	
		16		U0/U1	S2			T	
		18		L0/L1	S3			N	
		19		R0/R1					
		20							
		23							
		25							
		26.5							
		28							
		30							
		32							
		36							
		40							
		45							

Posizione bocche - Port position

- Aspirazione laterale - Mandata laterale / *side Inlet - side Outlet*
- C Aspirazione posteriore - Mandata laterale / *back Inlet - side Outlet*
- R Aspirazione e Mandata posteriore / *back Inlet - back Outlet*

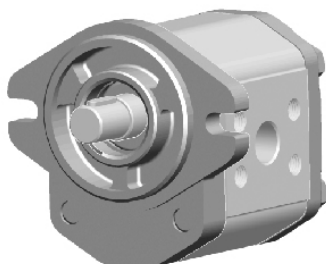
Guarnizioni - Seals

- Buna (-10°C + 80°C) - Max pressione in Aspirazione 3 bar assoluti / *Inlet pressure up to 3 bar absolute*
- V Viton (-10°C + 120°C) - Max pressione in Aspirazione 3 bar assoluti / *Inlet pressure up to 3 bar absolute*
- H Silicon (-40°C + 80°C) - Max pressione in Aspirazione 3 bar assoluti / *Inlet pressure up to 3 bar absolute*
- T Buna (-10°C + 80°C) - Max pressione in Aspirazione 6 bar assoluti / *Inlet pressure up to 6 bar absolute*
- N Buna (-10°C + 80°C) - Max pressione in Aspirazione 10 bar assoluti / *Inlet pressure up to 10 bar absolute*

Nota: Pompe multiple solo tipo F (aspirazione separata - liquidi in comune)

Note: Multiple pumps type F only (separated suction - common oil)

2.5VP..D - F. C2 A1



Profondità 15mm filetto M10x1.25

M10x1.25 thread depth 15

Assemblaggio con 4 tiranti da M12 coppia di serraggio 130 Nm

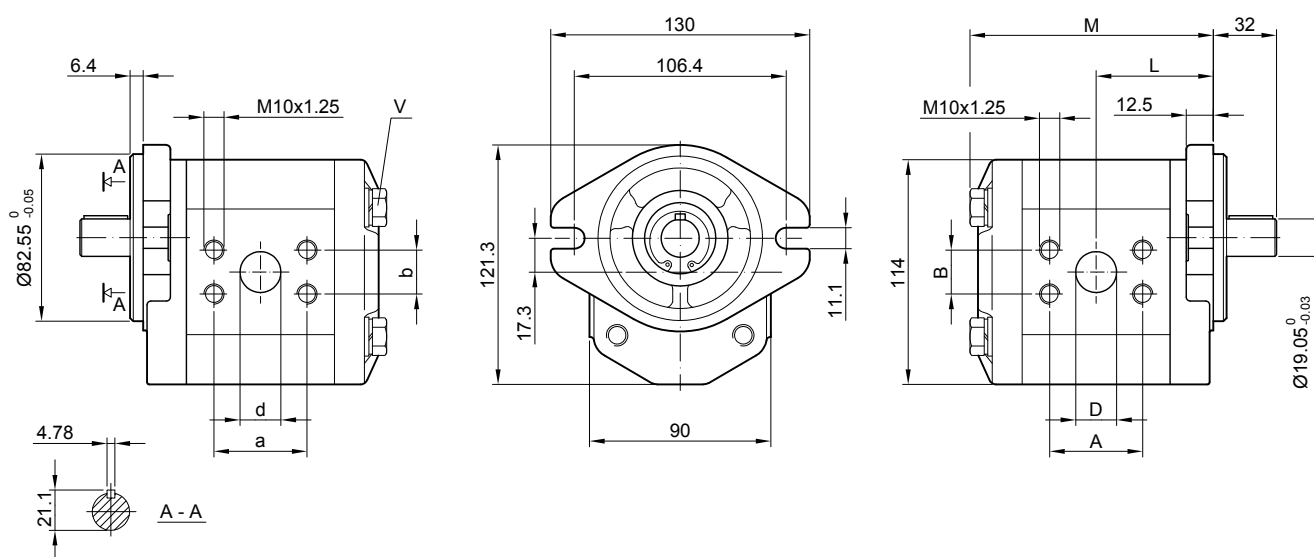
To mount the pump n.4 M12 screws with a torque wrench settings fixed at 130 Nm

Flangia anteriore e coperchio posteriore in ghisa

Cast iron front flange and back cover

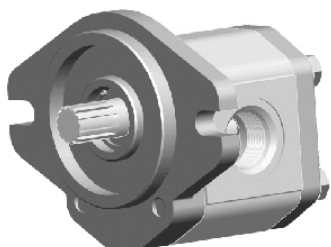
MANDATA
OUTLET

ASPIRAZIONE
INLET



Tipo Type	Cilindrata Displacement (cm ³ /rev)	Pressione massima Max pressure			Velocità massima Max. speed (r/min)	Velocità minima Min. speed (r/min)	Dimensioni Dimensions							
		P1 bar	P2 bar	P3 bar			M mm	L mm	A mm	B mm	D mm	a mm	b mm	d mm
2.5VP 10 D	10	250	270	290	4000	800	110	53.3	47.6	22.2	20	47.6	22.2	13
2.5VP 12.5 D	12.5	250	270	290	4000	800	113	54.8	47.6	22.2	20	47.6	22.2	13
2.5VP 14 D	14	250	270	290	4000	700	115	55.8	47.6	22.2	20	47.6	22.2	13
2.5VP 16 D	16	250	270	290	3500	700	118	57.1	47.6	22.2	20	47.6	22.2	13
2.5VP 18 D	18	250	270	290	3500	600	120	58.3	52.4	26.2	25	47.6	22.2	20
2.5VP 19 D	19	250	270	290	3500	600	121	58.8	52.4	26.2	25	47.6	22.2	20
2.5VP 20 D	20	250	270	290	3000	500	123	59.6	52.4	26.2	25	47.6	22.2	20
2.5VP 23 D	23	230	250	260	3500	500	126	61.3	52.4	26.2	25	47.6	22.2	20
2.5VP 25 D	25	230	250	260	3500	500	129	62.6	52.4	26.2	25	47.6	22.2	20
2.5VP 26.5 D	26.5	230	250	260	3500	500	131	63.6	52.4	26.2	25	47.6	22.2	20
2.5VP 28 D	28	230	250	260	3500	500	133	64.6	52.4	26.2	25	47.6	22.2	20
2.5VP 30 D	30	230	250	260	3000	400	135	65.6	52.4	26.2	25	47.6	22.2	20
2.5VP 32 D	32	200	230	250	3000	400	138	67.1	52.4	26.2	25	47.6	22.2	20
2.5VP 36 D	36	200	230	250	2750	400	142	69.1	52.4	26.2	25	47.6	22.2	20
2.5VP 40 D	40	160	180	200	2500	400	148	71.6	52.4	26.2	25	47.6	22.2	20
2.5VP 45 D	45	160	180	200	2500	400	153	74.6	52.4	26.2	25	47.6	22.2	20

2.5VP..D - U. S3 A2



Bocche di aspirazione e mandata filettate SAE con tenuta O-ring (SAE J 1926/1)

"D" and "d" ports are machined in compliance with O-ring seal in truncated housing (SAE J1926/1)

Assemblaggio con 4 tiranti da M12 coppia di serraggio 130 Nm

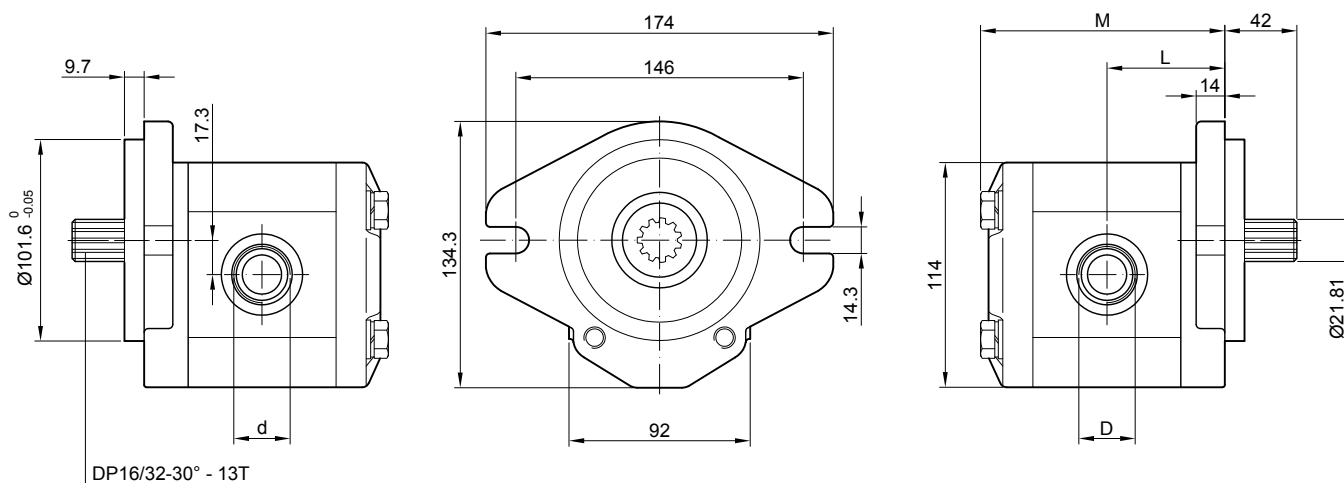
To mount the pump n.4xM12 screws with a torque wrench settings fixed at 130 Nm

Flangia anteriore e coperchio posteriore in ghisa

Cast iron front flange and back cover

MANDATA
OUTLET

ASPIRAZIONE
INLET

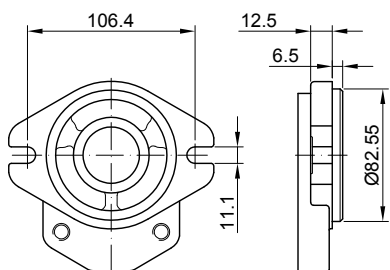


Tipo Type	Cilindrata Displacement (cm ³ /rev)	Pressione massima Max pressure			Velocità Max. speed (r/min)	Velocità Min. speed (r/min)	Dimensioni Dimensions			
		P1 bar	P2 bar	P3 bar			M mm	L mm	D mm	d mm
2.5VP 10 D	10	280	290	300	4000	800	110	53.3	1 1/16-12UNF	7/8-14UNF
2.5VP 12.5 D	12.5	280	290	300	4000	800	113	54.8	1 1/16-12UNF	7/8-14UNF
2.5VP 14 D	14	280	290	300	4000	700	115	55.8	1 1/16-12UNF	7/8-14UNF
2.5VP 16 D	16	280	290	300	3500	700	118	57.1	1 1/16-12UNF	7/8-14UNF
2.5VP 18 D	18	280	290	300	3500	600	120	58.3	1 1/16-12UNF	7/8-14UNF
2.5VP 19 D	19	280	290	300	3500	600	121	58.8	1 1/16-12UNF	7/8-14UNF
2.5VP 20 D	20	280	290	300	3000	500	123	59.6	1 1/16-12UNF	7/8-14UNF
2.5VP 23 D	23	250	265	280	3500	500	126	61.3	1 1/16-12UNF	7/8-14UNF
2.5VP 25 D	25	250	265	280	3500	500	129	62.6	1 5/16-12UNF	1 1/16-12UNF
2.5VP 26.5 D	26.5	250	265	280	3500	500	131	63.6	1 5/16-12UNF	1 1/16-12UNF
2.5VP 28 D	28	250	265	280	3500	500	133	64.6	1 5/16-12UNF	1 1/16-12UNF
2.5VP 30 D	30	250	265	280	3000	400	135	65.6	1 5/16-12UNF	1 1/16-12UNF
2.5VP 32 D	32	230	245	260	3000	400	138	67.1	1 5/16-12UNF	1 1/16-12UNF
2.5VP 36 D	36	230	245	260	2750	400	142	69.1	1 5/16-12UNF	1 1/16-12UNF
2.5VP 40 D	40	190	200	210	2500	400	148	71.6	1 5/16-12UNF	1 1/16-12UNF
2.5VP 45 D	45	190	200	210	2500	400	153	74.6	1 5/16-12UNF	1 1/16-12UNF

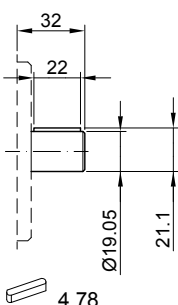
SERIE 2.5VP - 2.5VP SERIES

FLANGE / FRONT COVERS

ALBERI / SHAFTS

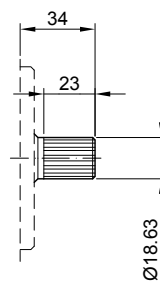


A1



C2

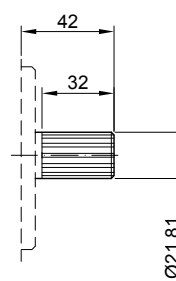
Coppia max 190 Nm
Max. torque 190 Nm



DP16/32-30° - 11T

S2

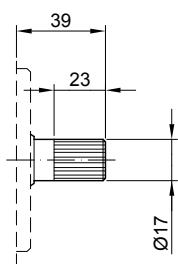
Coppia max 210 Nm
Max. torque 210 Nm



DP16/32-30° - 13T

S3

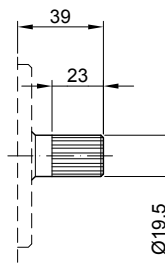
Coppia max 300 Nm
Max. torque 300 Nm



DP16/32-30° - 10T

S1

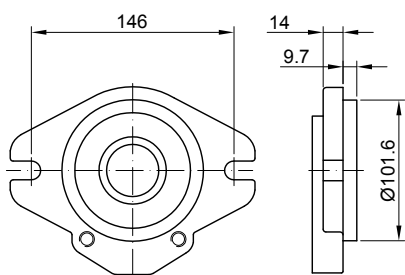
Coppia max 200 Nm
Max. torque 200 Nm



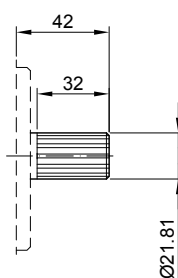
EXT12Z-1.5m - 30°

S0

Coppia max 220 Nm
Max. torque 220 Nm



A2



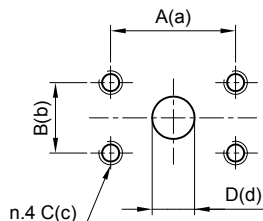
DP16/32-30° - 13T

S3

Coppia max 300 Nm
Max. torque 300 Nm

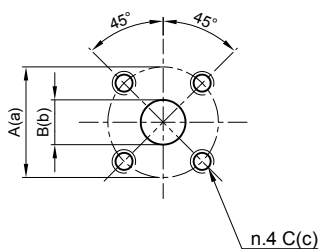
SERIE 2.5VP - 2.5VP SERIES

BOCCHE / PORTS



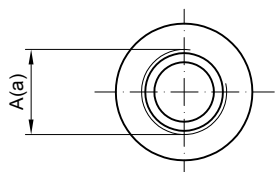
F0/F1

Tipo Type	Codice bocca Ports code	Aspirazione Inlet				Mandata Outlet			
		A	B	C	D	a	b	c	d
2.5VP 10 ÷ 16	F0	47.6	22.2	M10x1.25	20	47.6	22.2	M10x1.25	13
2.5VP 18 ÷ 45	F1	52.4	26.2	M10x1.25	25	47.6	22.2	M10x1.25	20



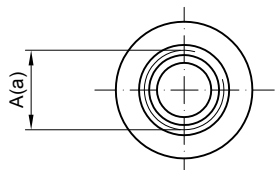
F2

Tipo Type	Aspirazione Inlet			Mandata Outlet		
	A	B	C	a	b	c
2.5VP 10 ÷ 16	55	20	M8	55	13	M8
2.5VP 18 ÷ 45	55	25	M8	55	20	M8



Z0/Z1/Z2

Tipo Type	Codice bocca Ports code	Aspirazione Inlet	Mandata Outlet
		A	a
2.5 VP 10 ÷ 14	Z0	M22x1.5	M18x1.5
2.5 VP 16 ÷ 20	Z1	M27x2	M22x1.5
2.5 VP 23 ÷ 45	Z2	M33x2	M27x2

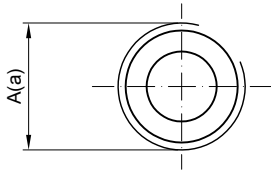


U0/U1

Tipo Type	Codice bocca Ports code	Aspirazione Inlet	Mandata Outlet
		A	a
2.5VP 10 ÷ 23	U0	1 1/16-12UNF	7/8-14 UNF
2.5VP 25 ÷ 45	U1	1 5/16-12UNF	1 1/16-12UNF

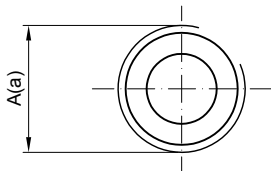
SERIE 2.5VP - 2.5VP SERIES

BOCCHE / PORTS



L0/L1

Tipo Type	Codice bocca Ports code	Aspirazione Inlet	Mandata Outlet
		A	a
2.5VP 10 ÷ 23	L0	G 3/4	G 1/2
2.5VP 25 ÷ 45	L1	G 1	G 3/4



R0/R1

Tipo Type	Codice bocca Ports code	Aspirazione Inlet	Mandata Outlet
		A	a
2.5VP 10 ÷ 23	R0	PT 3/4	PT 1/2
2.5VP 25 ÷ 45	R1	PT 1	PT 3/4