

BRAKING VALVE



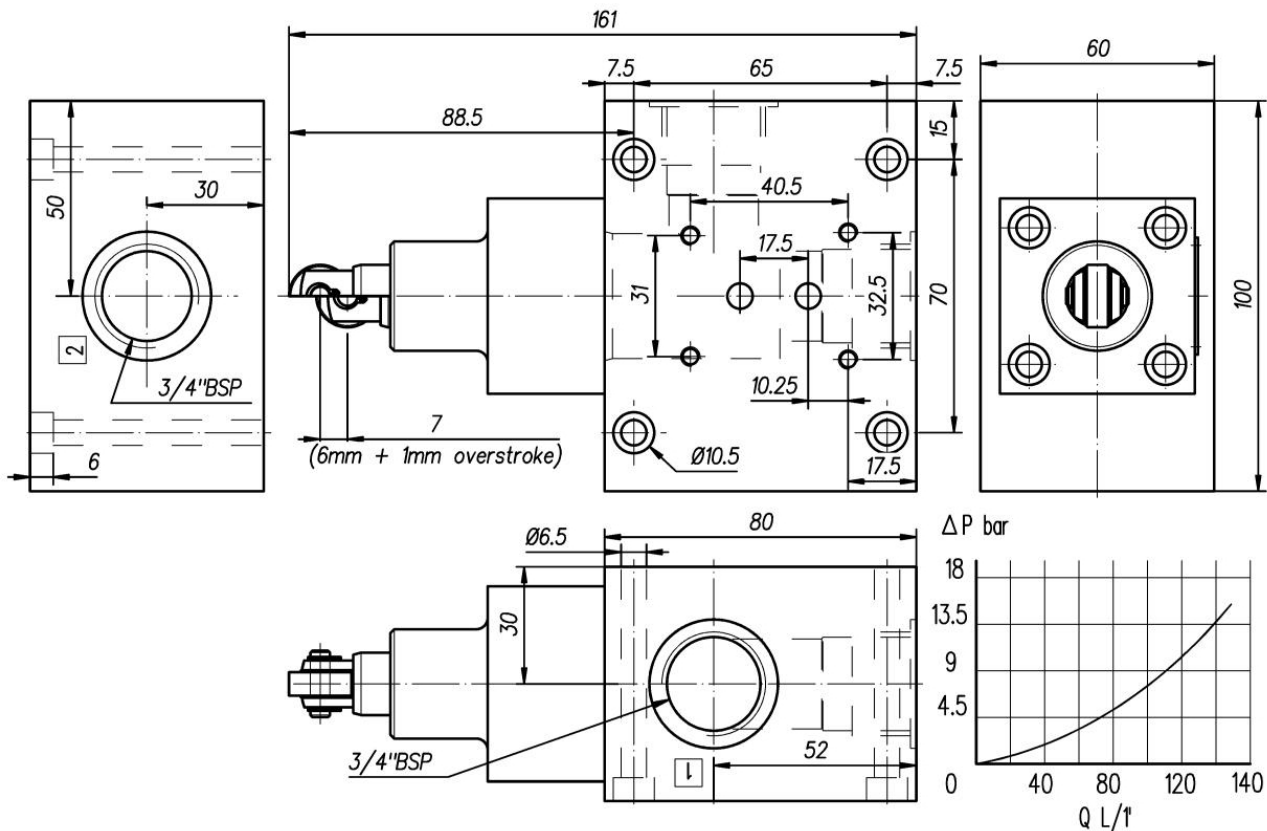
Characteristics

TYPE	1	L1	2	L2	FLOW	PRESSURE	WEIGHT
IF*-34/N*	3/4"	∅ 33x1	3/4"	∅ 33x1	130 L/min.	210 bar	4 Kg.

Description

The braking valves type IF allow the gradual adjustment of flow by changing the position of duty-shaped cartridge. They are especially used in the deceleration and speed control of actuators. These valves can be supplied either with normally opened or closed 3/4" BSP threads.

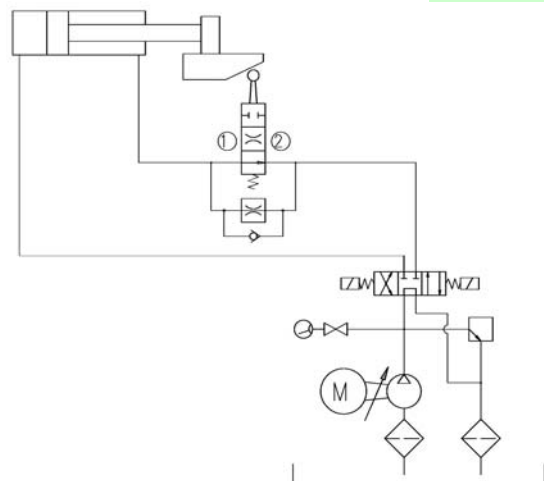
Dimensions



Installation rules

- The valves type IF can be mounted in any position
- Fluid to be used: hydraulic oil in compliance with DIN 51524 rules, viscosity between 30 and 100 mm²/s (cSt) at 40°C
- Recommended filtration: 25μ
- Hydraulic fluid temperature: from -20° to +75°C

Symbol

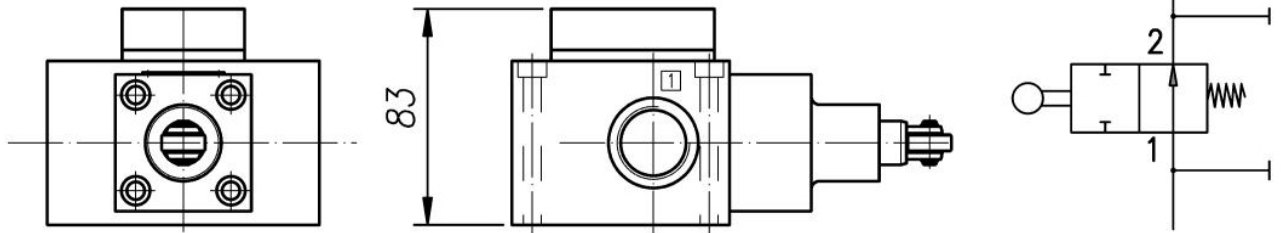


BRAKING VALVE

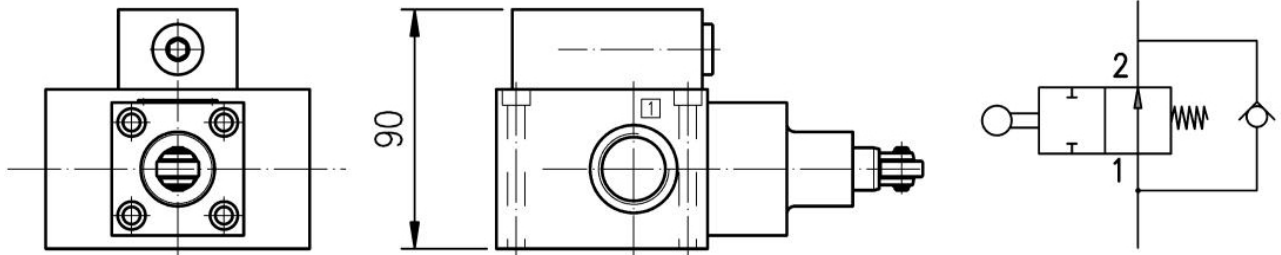


Overall dimensions

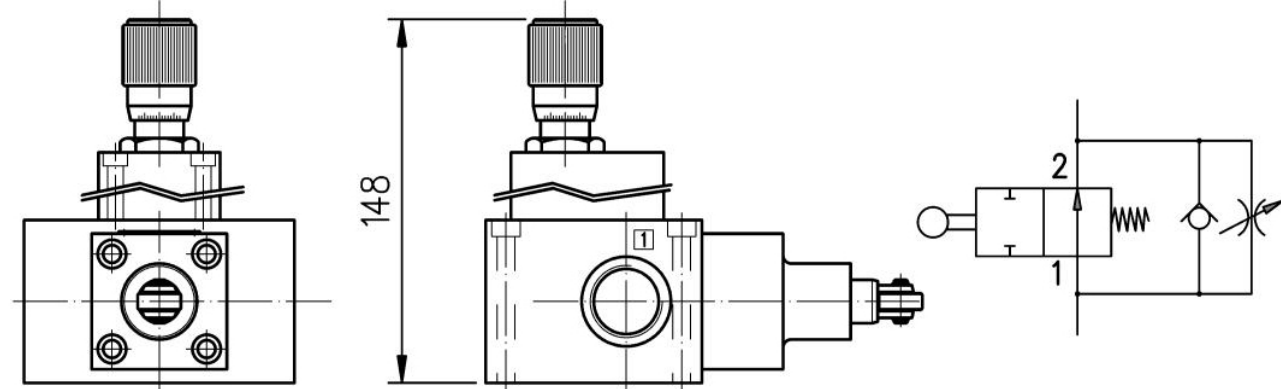
IFC



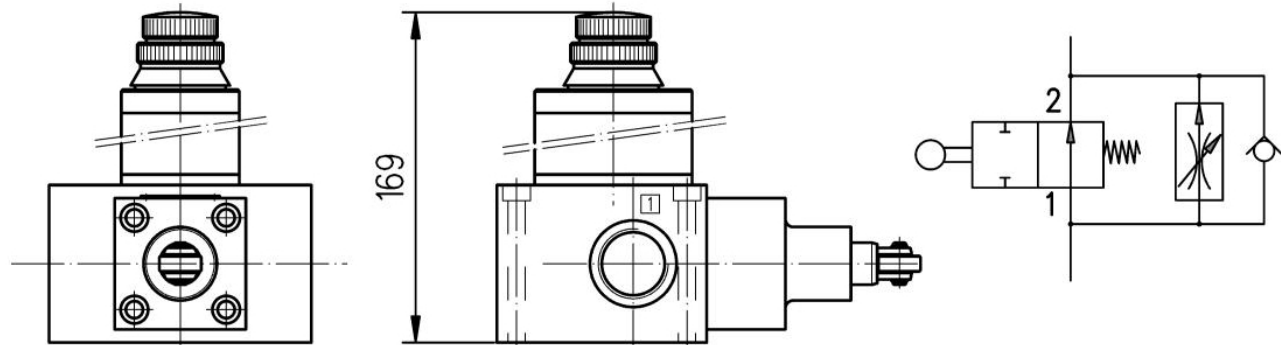
IFR



IFP



IFQ



Ordering code

IF	*	-	34	/	N*	-	*
<p>1=1l/m' 6=6l/m' 11=11l/m' 16=16l/m' 24=24l/m' (only for compensated regulator, advise liters) NA = normally opened NC = normally closed 34 = 3/4" BSP threads C=blind R=with check P=non-compensated regulator Q=with compensated regulator</p>							
Braking valve							