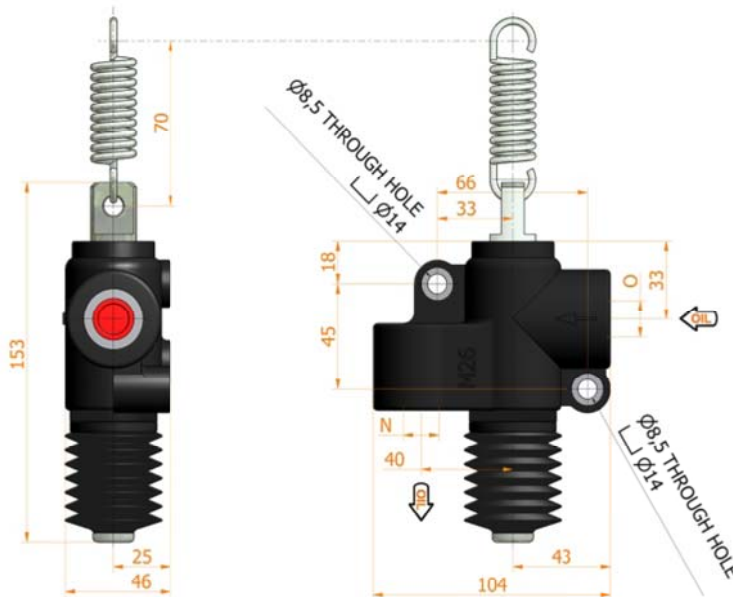
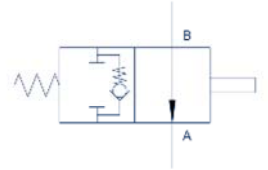


# VFC 3/8 GAS na

normally open  
2 position  
with mechanic control  
for tipping trucks



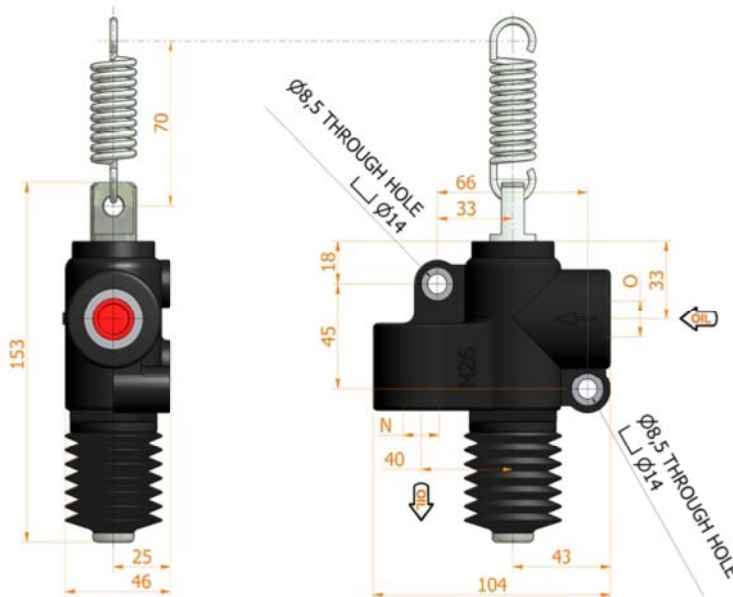
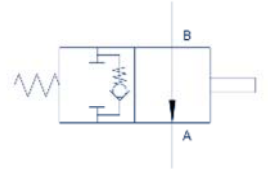
**Specifications:**

- Cast iron body
- Piston treated with Niploy
- White zinc plated external parts
- Standard colour black

N-O GAS	A mm	B mm	C mm	D °	E °	FLOW liters/min	PRESSURE BAR		MASS KG	CODE
							OPTIMAL	MAX		
3/8	--	--	--	--	--	60	--	250	1,700	6200.0010

# VFC 1/2 GAS na

normally open  
2 position  
with mechanic control  
for tipping trucks



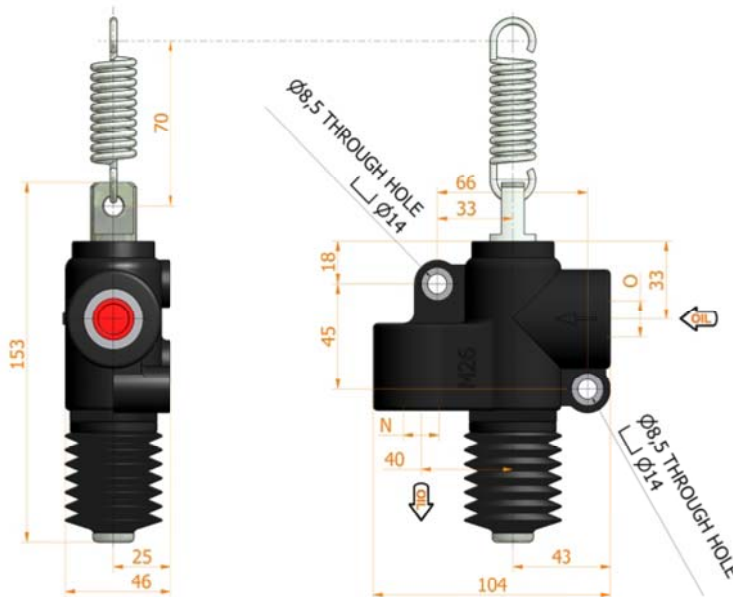
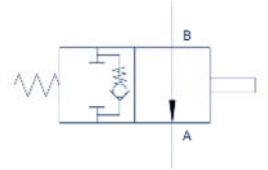
**Specifications:**

- Cast iron body
- Piston treated with Niploy
- White zinc plated external parts
- Standard colour black

N-O GAS	A mm	B mm	C mm	D °	E °	FLOW liters/min	PRESSURE BAR		MASS KG	CODE
							OPTIMAL	MAX		
1/2	--	--	--	--	--	80	--	250	1,800	6200.0012

# VFC 3/4 GAS na

normally open  
2 position  
with mechanic control  
for tipping trucks



**Specifications:**

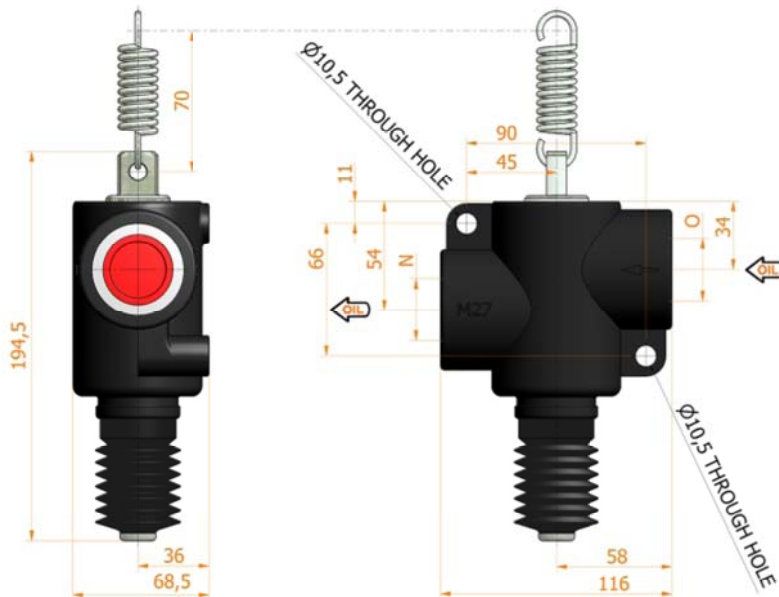
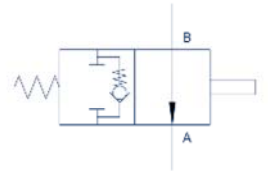
- Cast iron body
- Piston treated with Niploy
- White zinc plated external parts
- Standard colour black

N-O GAS	A mm	B mm	C mm	D °	E °	FLOW liters/min	PRESSURE BAR		MASS KG	CODE
							OPTIMAL	MAX		
3/4	--	--	--	--	--	100	--	250	1,900	6200.0014



# VFC 1 GAS na

normally open  
2 position  
with mechanic control  
for tipping trucks



**Specifications:**

- Cast iron body
- Piston treated with Niploy
- White zinc plated external parts
- Standard colour black

N-O GAS	A mm	B mm	C mm	D °	E °	FLOW liters/min	PRESSURE BAR		MASS KG	CODE
							OPTIMAL	MAX		
1	--	--	--	--	--	140	--	200	2,500	62000016