

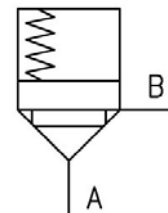
LOGIC CARTRIDGE VALVE



Characteristics

| TYPE | SIZE | AREA RATIO |
|--------------|-------|------------------|
| ICL- 06-**** | DN 6 | 1 : 1 ; 1 : 1.5 |
| ICL- 10-**** | DN 10 | 1 : 1.1 |
| ICL- 16-**** | DN 16 | 1 : 1.1 1 : 2 |
| ICL- 25-**** | DN 25 | |
| ICL- 32-**** | DN 32 | |

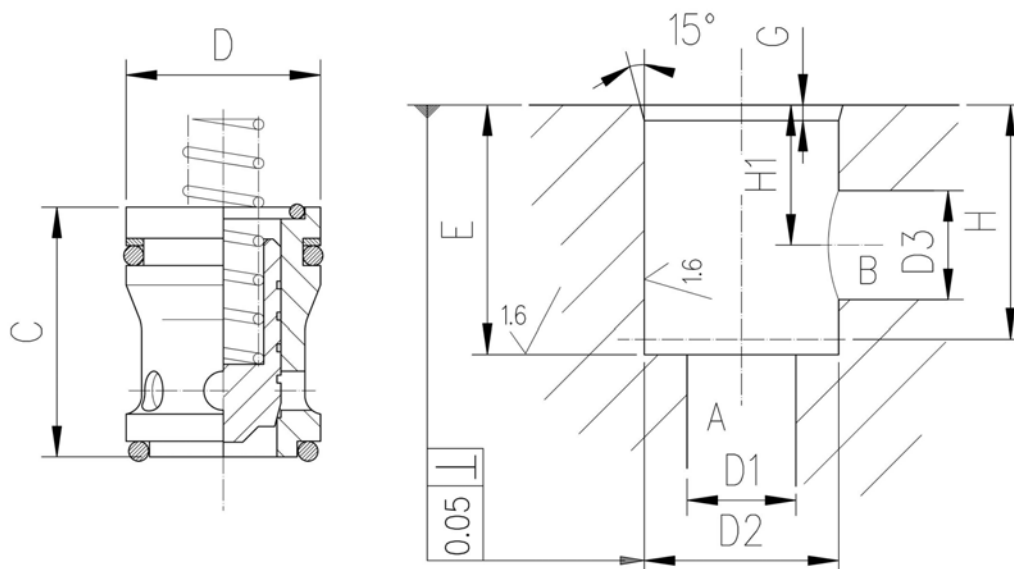
Symbol



Description

They are 2-way logic cartridge valves that slip into a drilled manifold and are used as directional control valves (1:2 poppet – area ratio), pressure control and flow control valves.

Dimensions



| TYPE | C | D | D1 max. | D2 H6 | D3 max. | E ⁻⁰ / _{+0.05} | G | H Bored part | H1 |
|---------------|----|----|---------|-------|---------|------------------------------------|-----|--------------|------|
| ICL- 06 -**** | 20 | 16 | 10 | 16 | 9 | 20 | 1.5 | 19 | 12.5 |
| ICL- 10 -**** | 32 | 25 | 17 | 25 | 18 | 32 | 2 | 30.5 | 18 |
| ICL- 16 -**** | 42 | 32 | 23 | 32 | 25 | 42 | 2 | 40.5 | 24 |
| ICL- 25 -**** | 52 | 40 | 28 | 40 | 33 | 52 | 2 | 50 | 29 |
| ICL- 32 -**** | 70 | 60 | 42 | 60 | 46 | 70 | 3 | 68 | 38.5 |

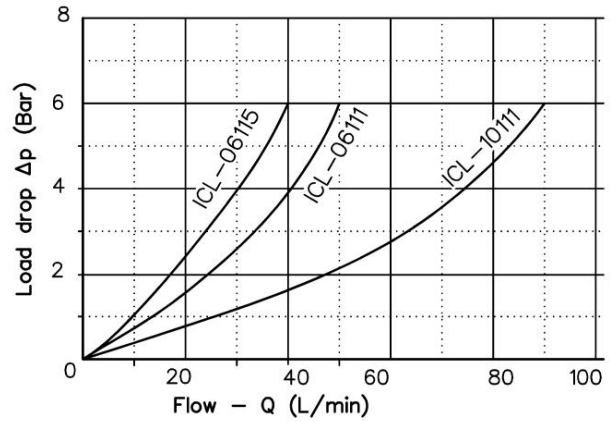
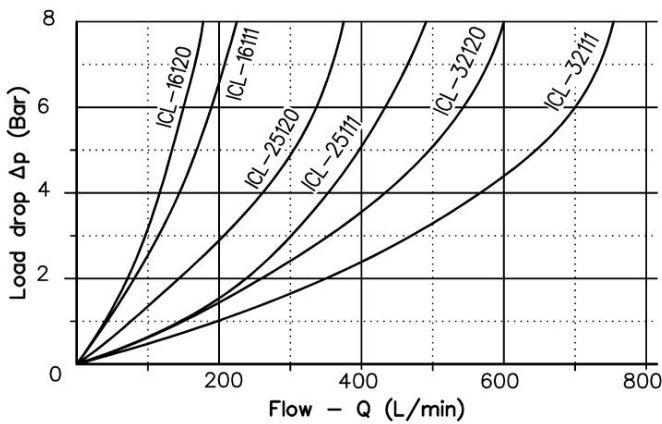
Installation rules

- The logic cartridge valves type ICL can be mounted in any position
- Fluid to be used: hydraulic oil in compliance with DIN 51524 rules, viscosity between 30 and 100 mm²/s (cSt) at 40°C
- Recommended filtration: 25µ
- Hydraulic fluid temperature: from -20° to +75°C

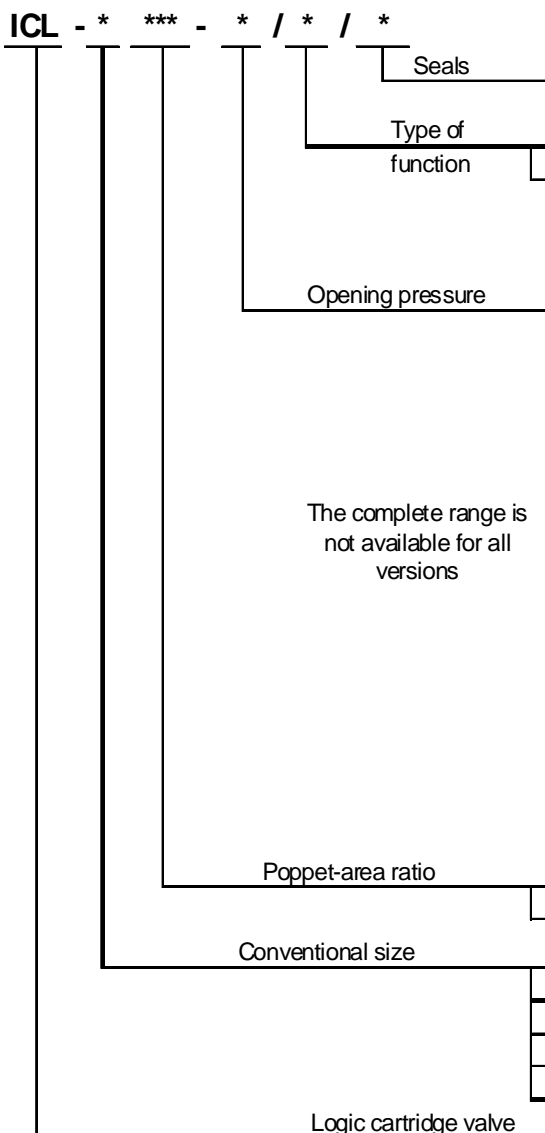


Diagram

A → B



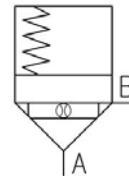
Ordering code

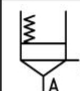
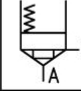


V = (otherwise omit it)

R = Valve used as unidirectional check (on request)

E = Valve used as cut-off valve (only for 1:1,1 ratio)
 ø orificio su richiesta Tipo E



| in bar | A → B | B → A | Ratio |
|--------|-------|-------|---------------------------------------------------------------------------------------------|
| A → | 0.5 | 5 |  1:1,1 |
| B → | 1 | 10 | |
| C → | 3 | 30 | |
| A → | 0.6 | 0.6 |  1:2 |
| C → | 2 | 2 | |
| D → | 5 | 5 | |

110 = 1:1,0 (ICL-06)

111 = 1:1,1 (ICL-10 ; ICL-16 ; ICL-25 ; ICL-32)

115 = 1:1,5 (ICL-06)

120 = 1:2,0 (ICL-16 ; ICL-25 ; ICL-32)

06 = DN 06

10 = DN 10

16 = DN 16

25 = DN 25

32 = DN 32